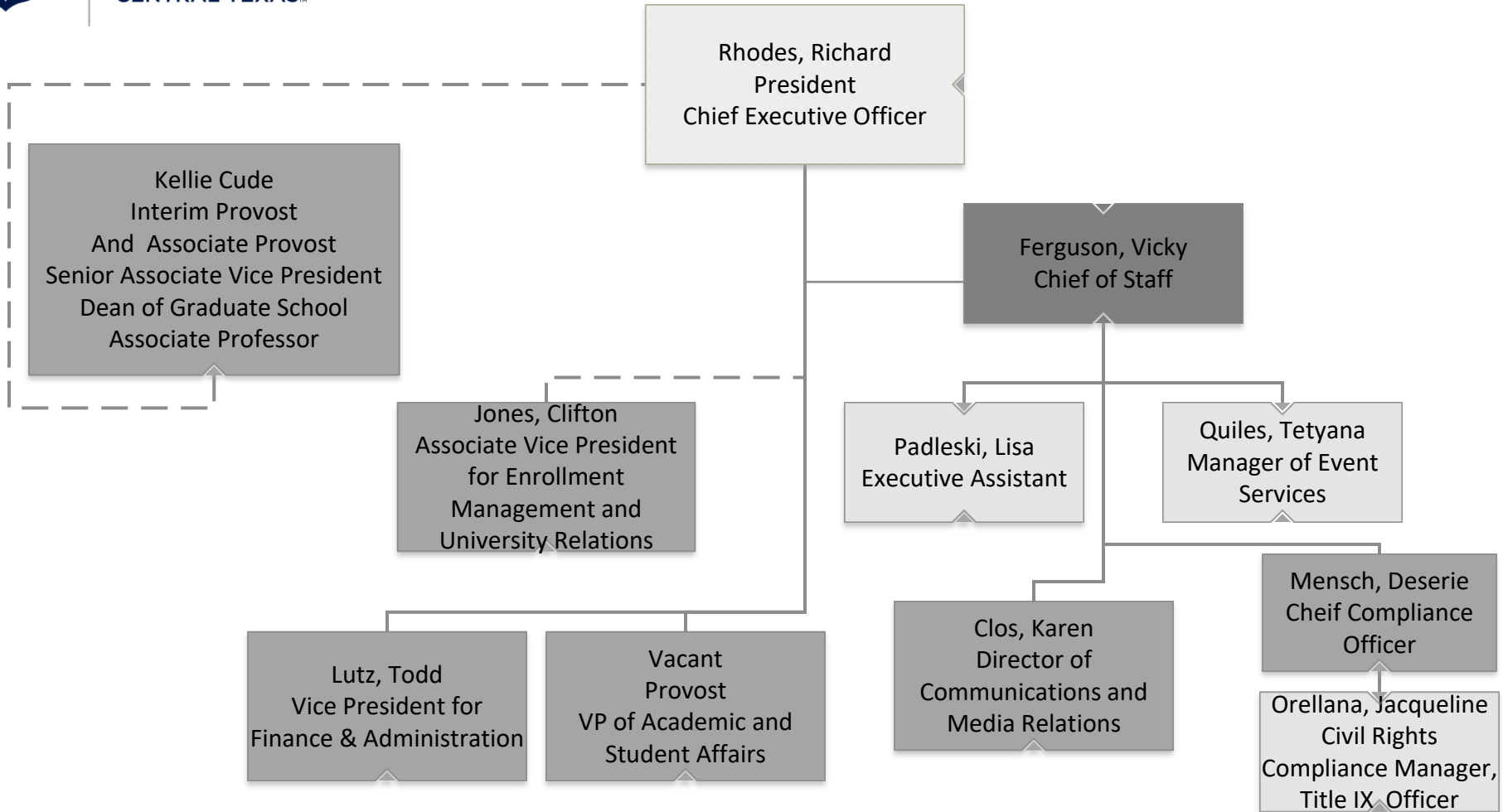


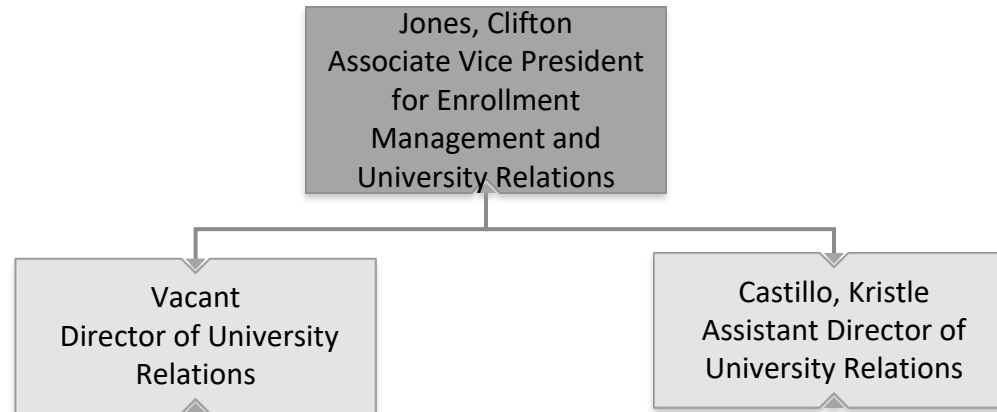


# Office of the President





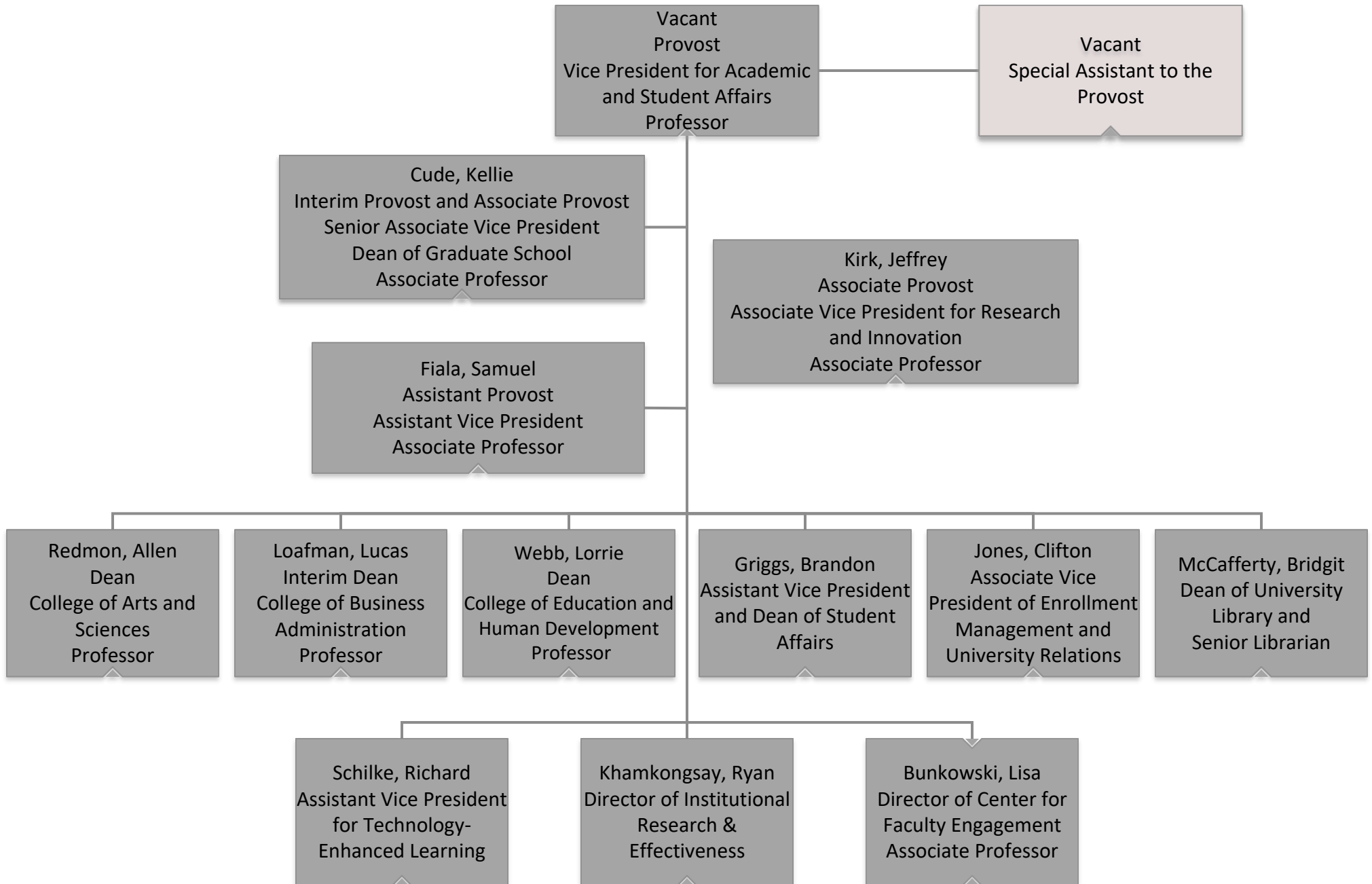
## Office of the President





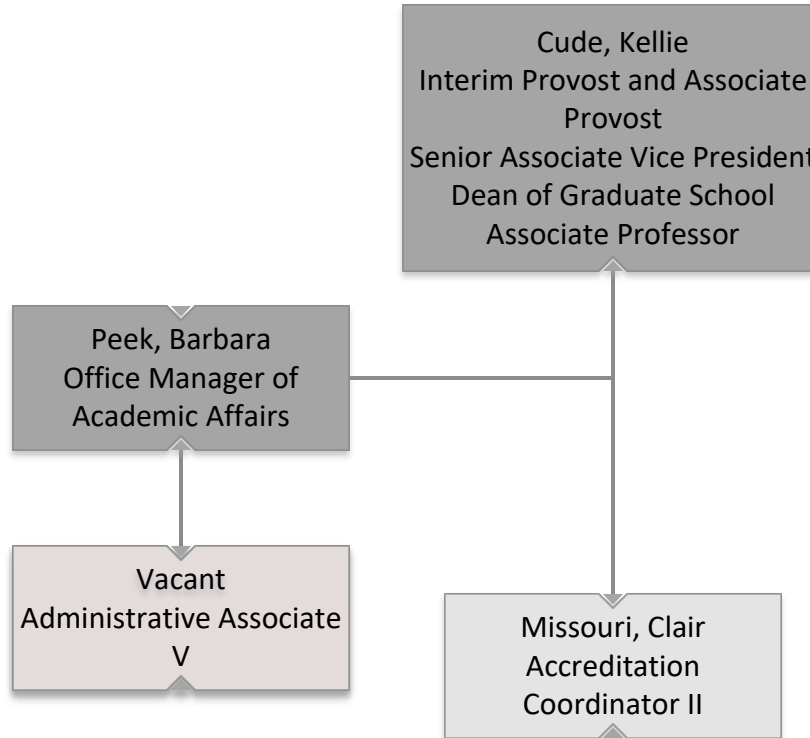
# Provost

## Vice President for Academic and Student Affairs



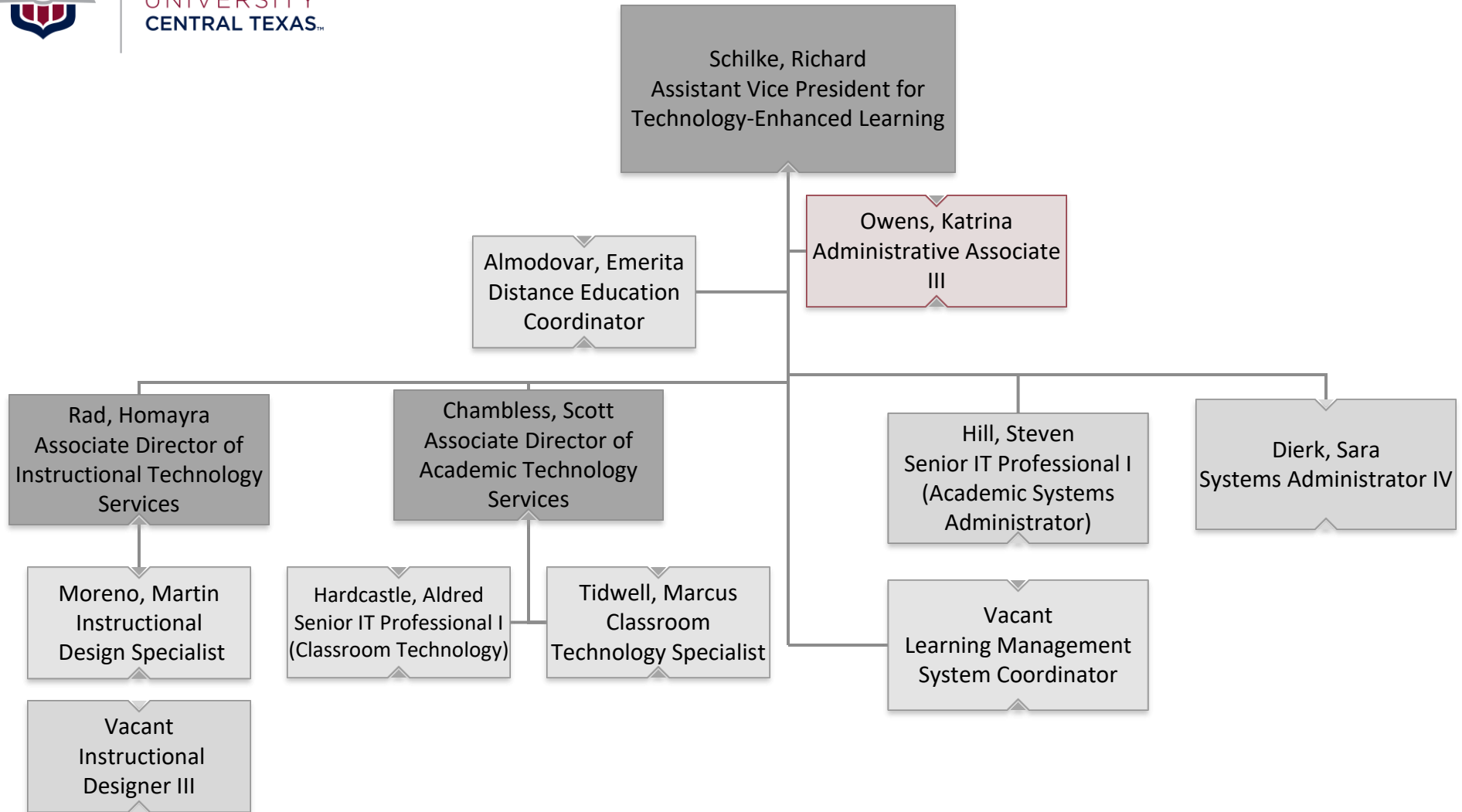


## Academic Affairs



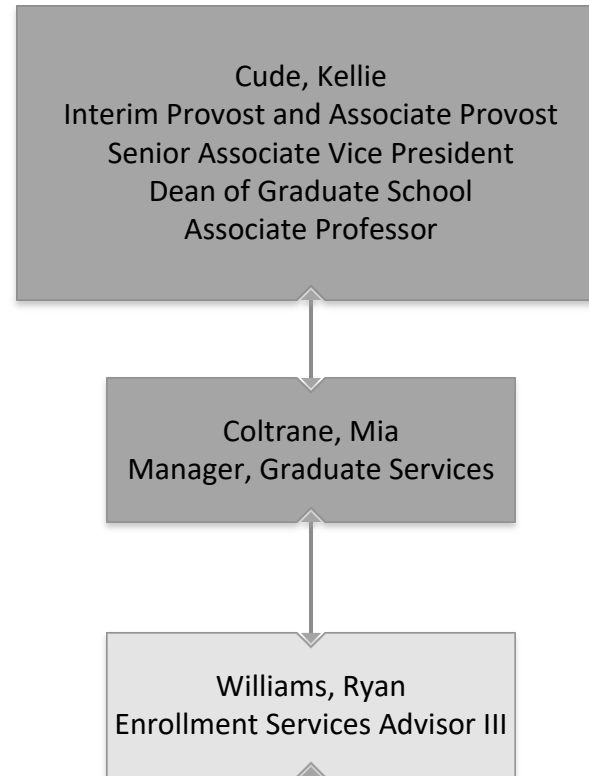


# Technology Enhanced Learning



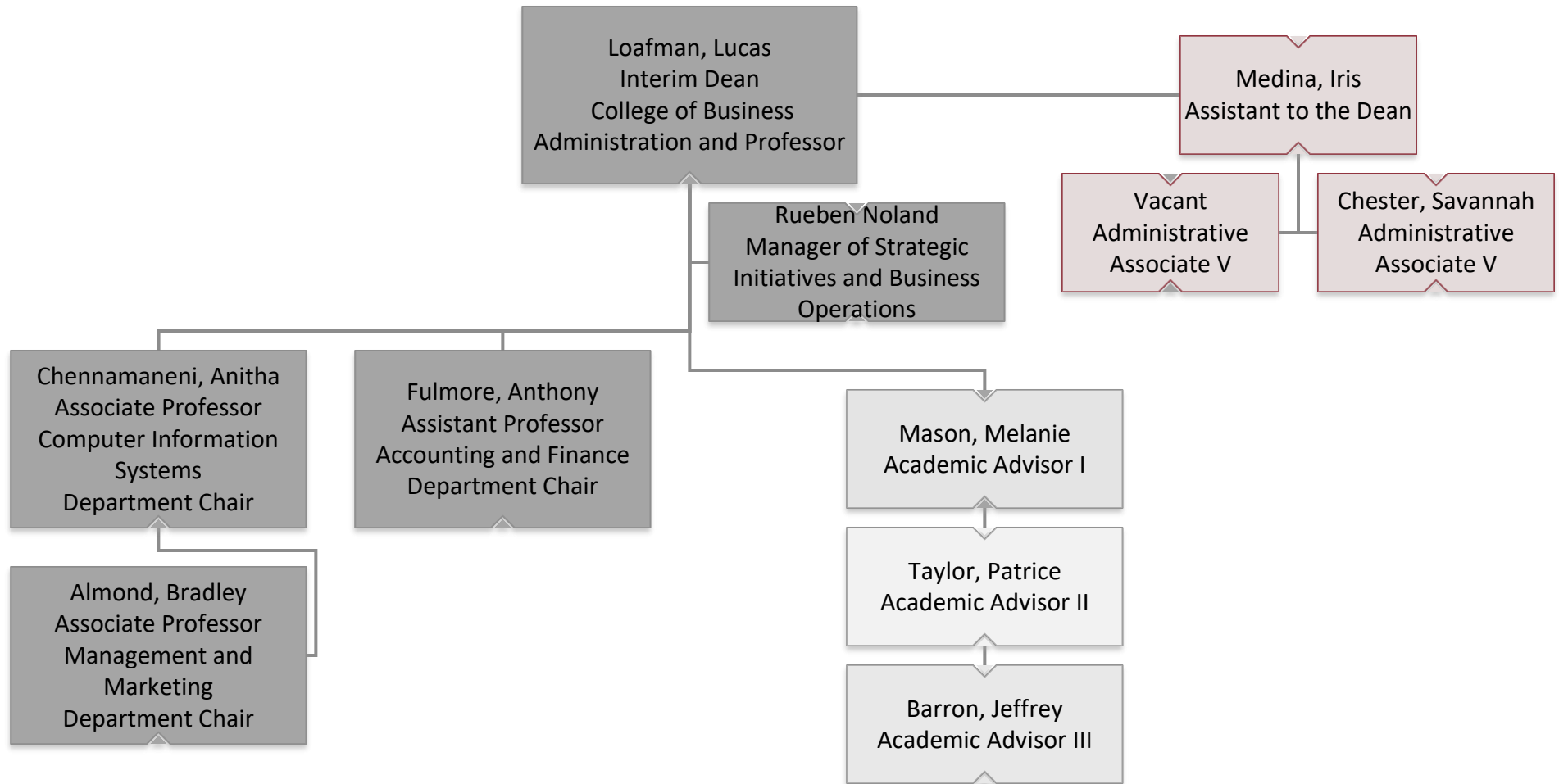


## Graduate School



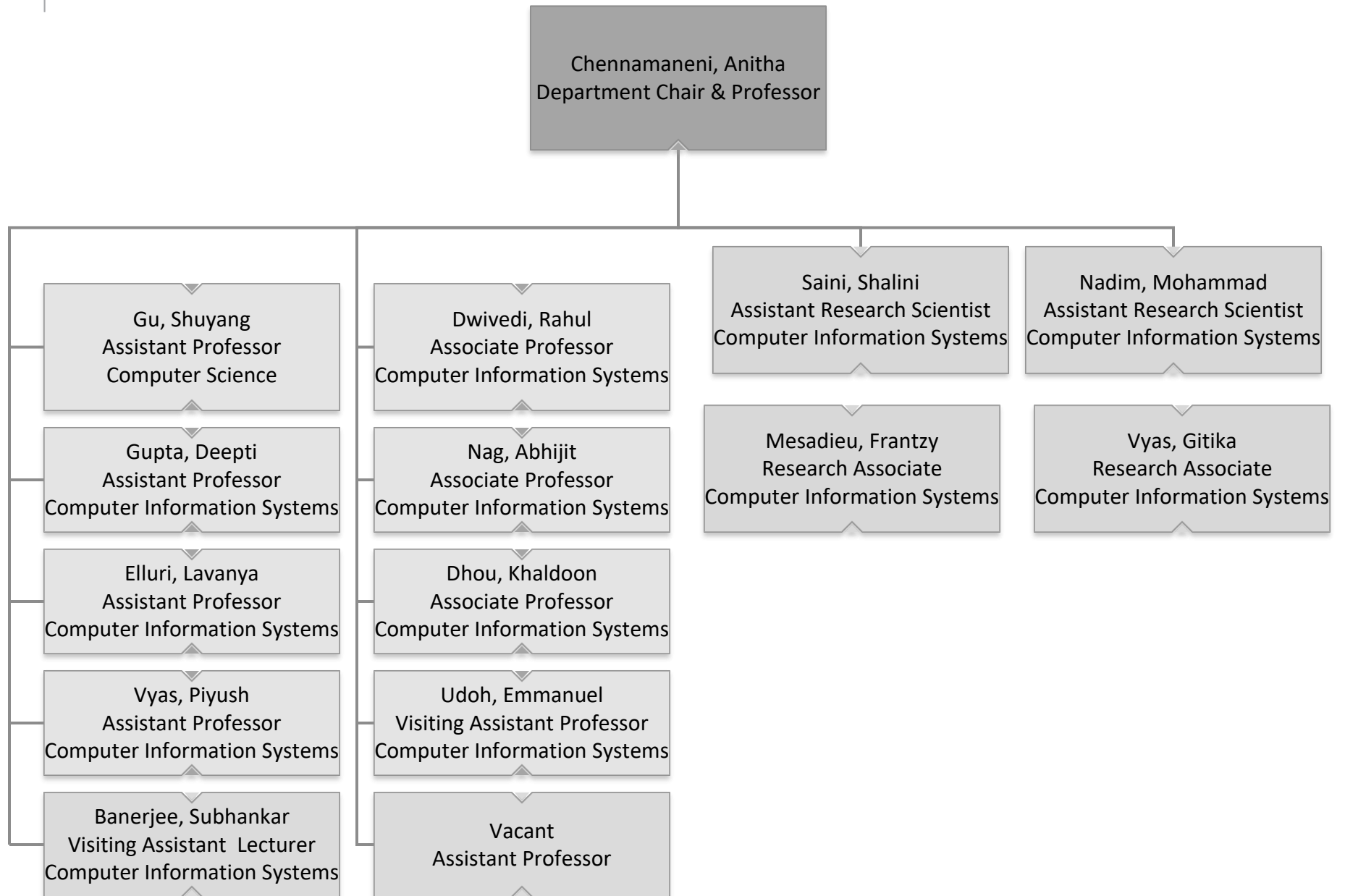


# College of Business Administration





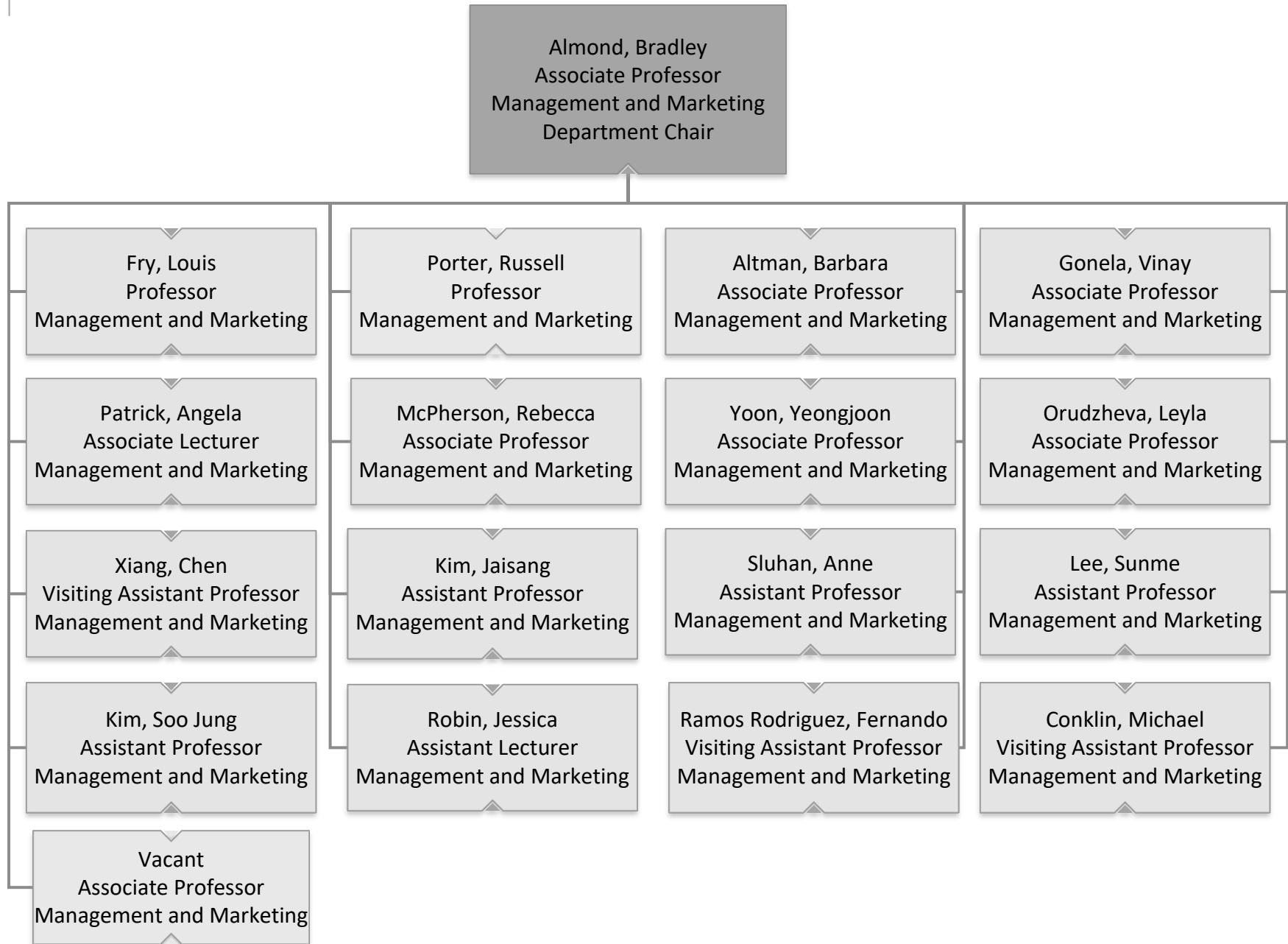
## College of Business Administration Computer Information Systems





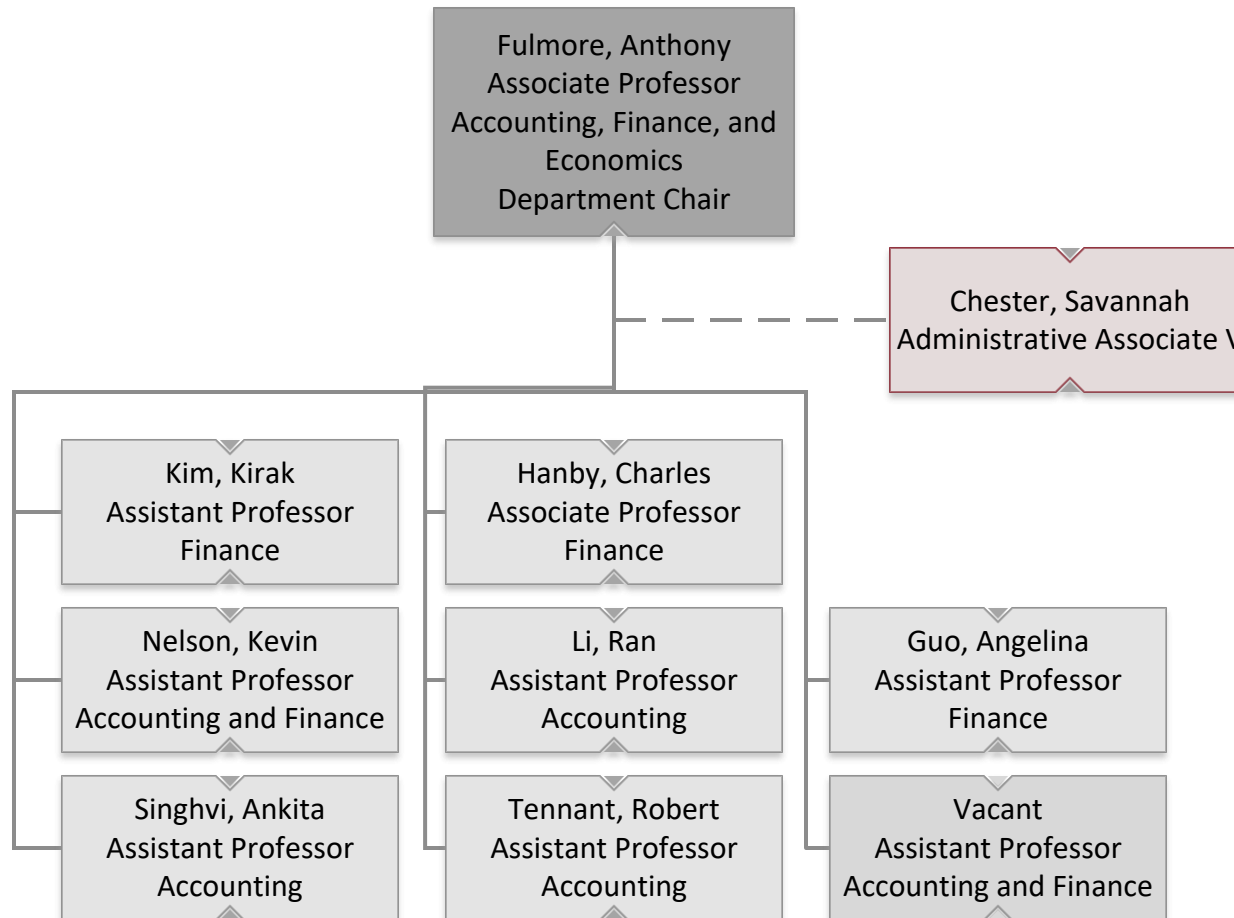


## College of Business Administration Management and Marketing



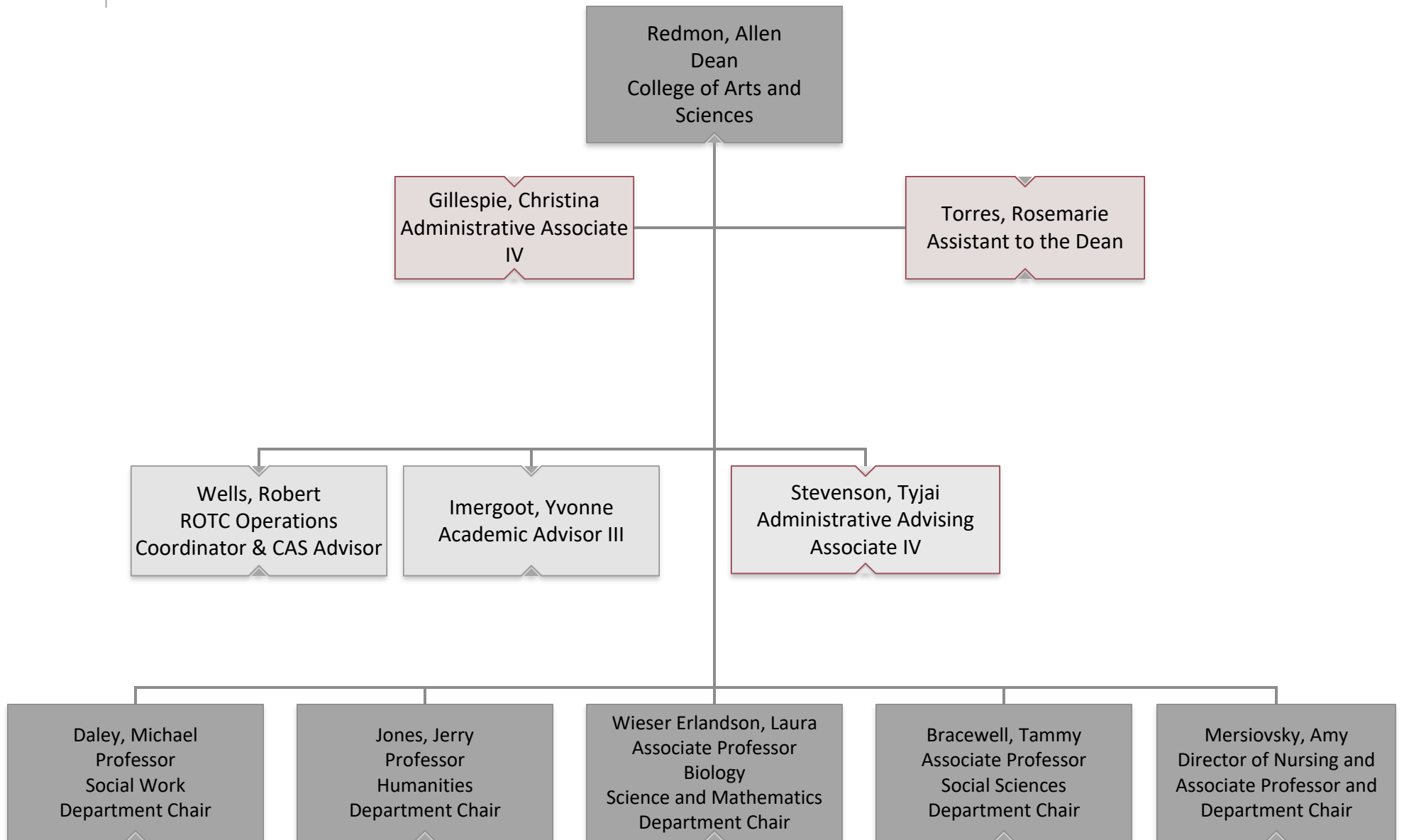


## College of Business Administration Accounting, Finance, and Economics



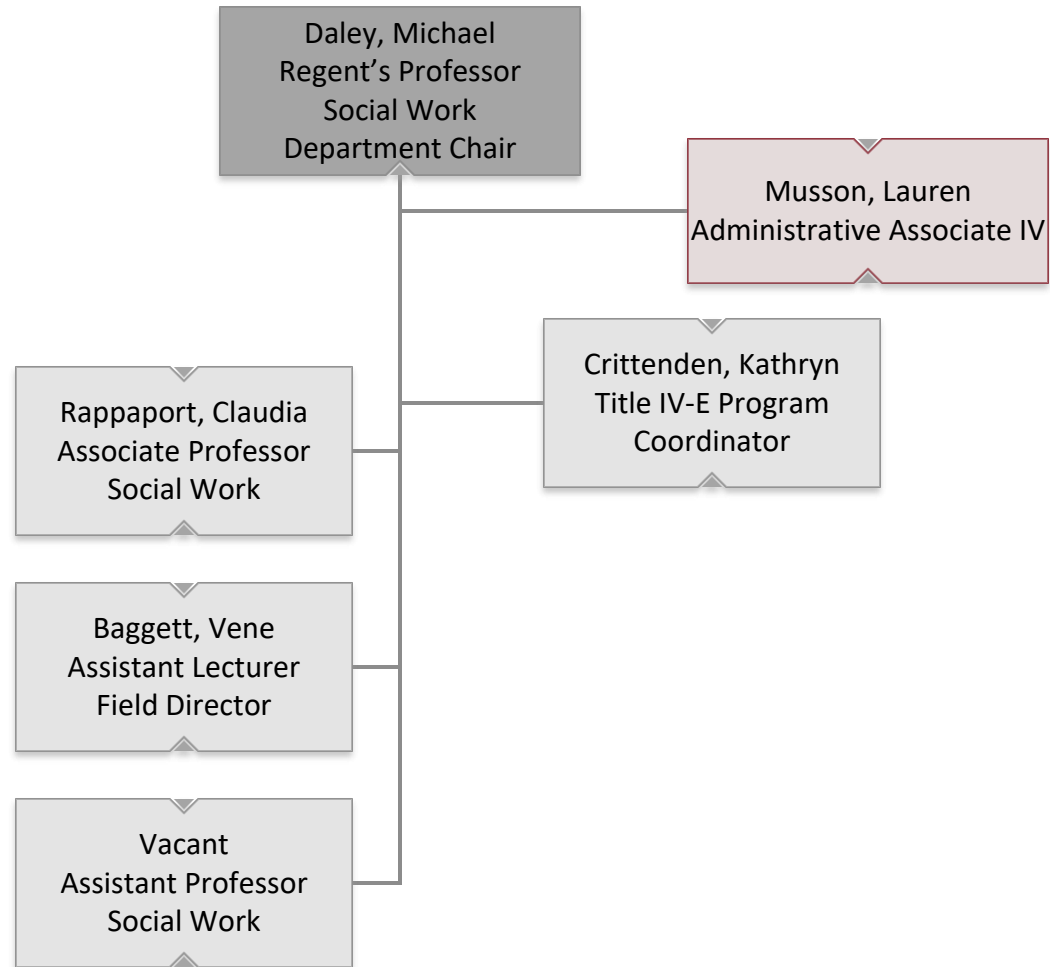


## College of Arts and Sciences



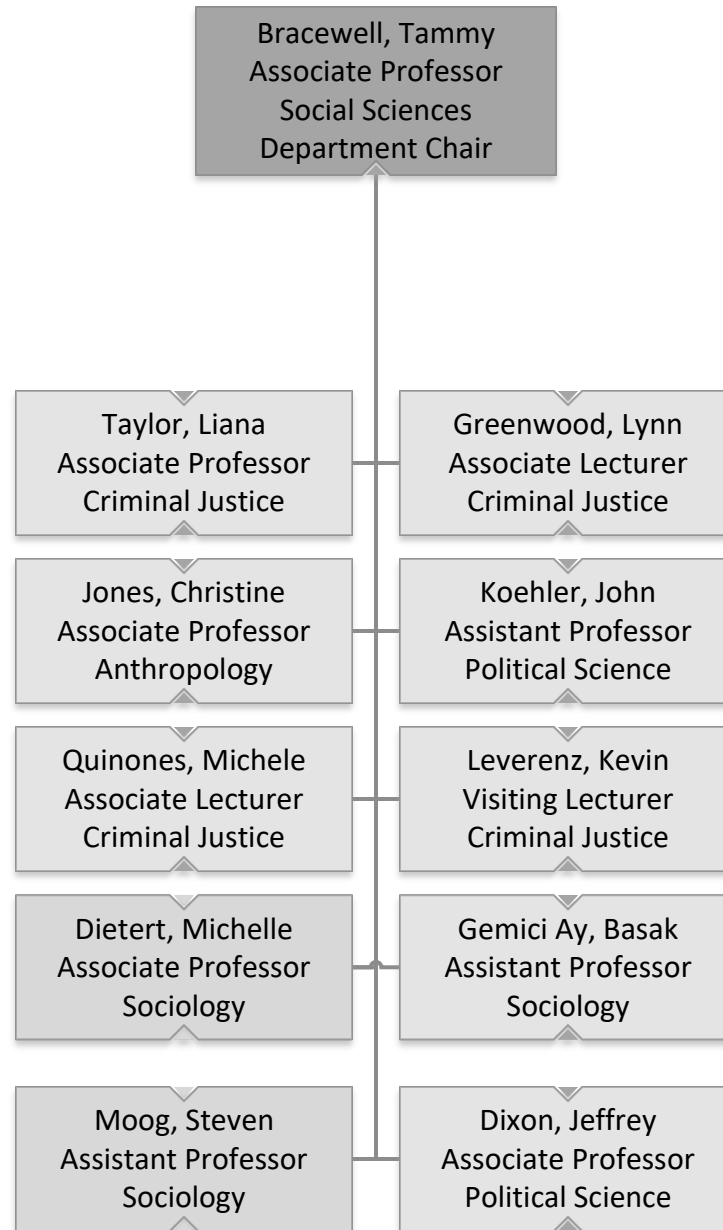


# College of Arts and Sciences Social Work



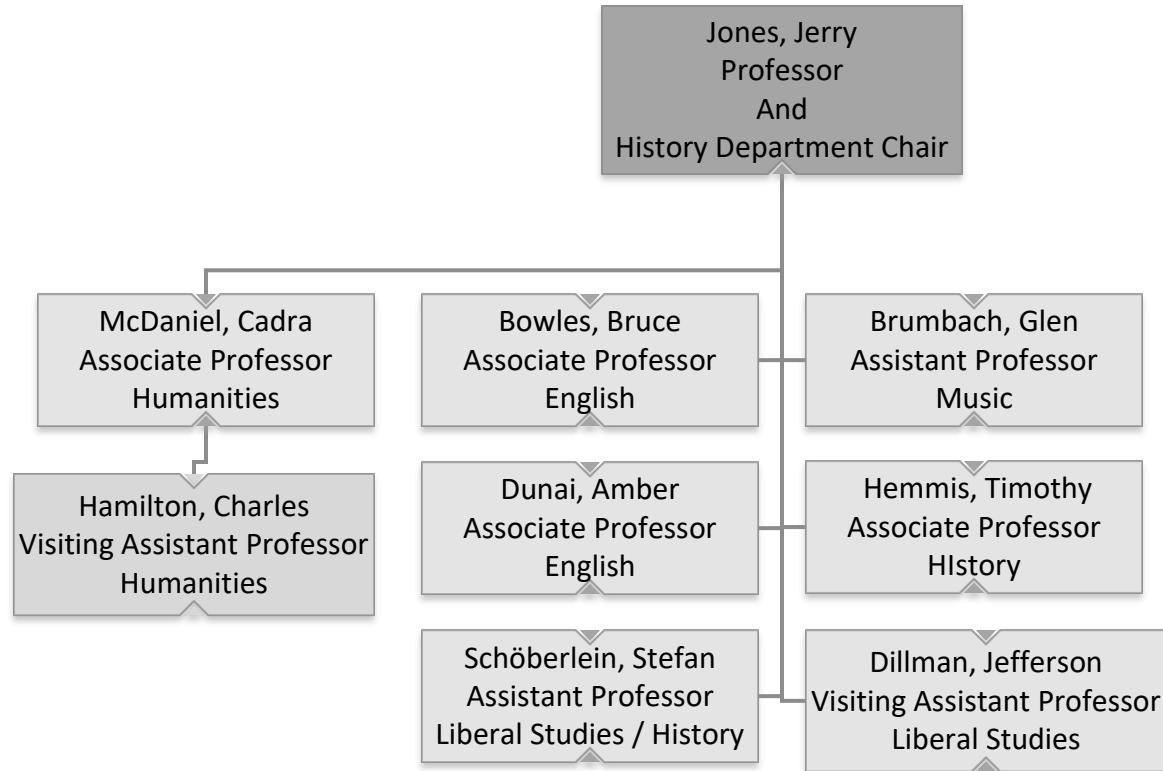


## College of Arts and Sciences Social Sciences



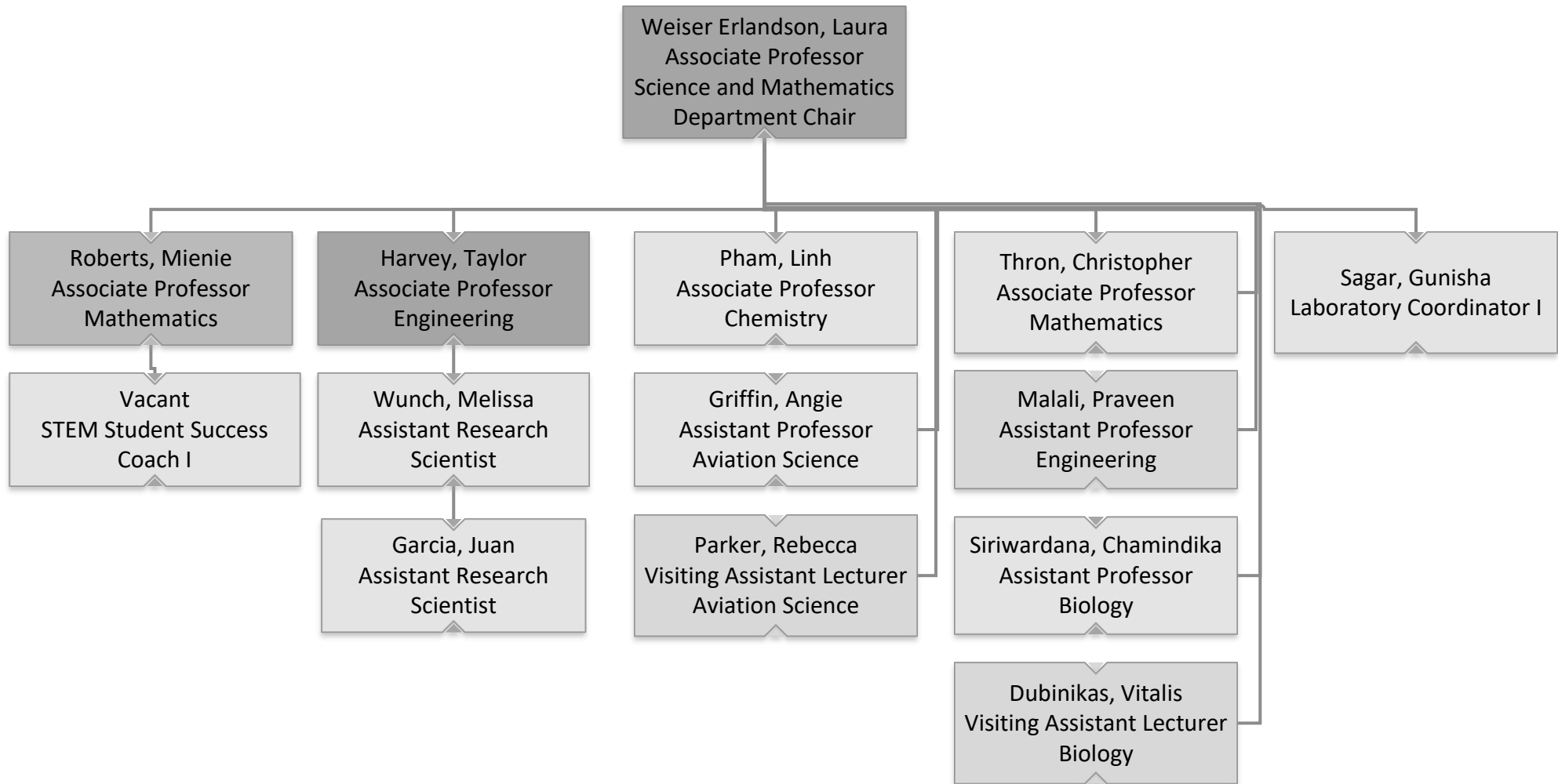


## College of Arts and Sciences Humanities



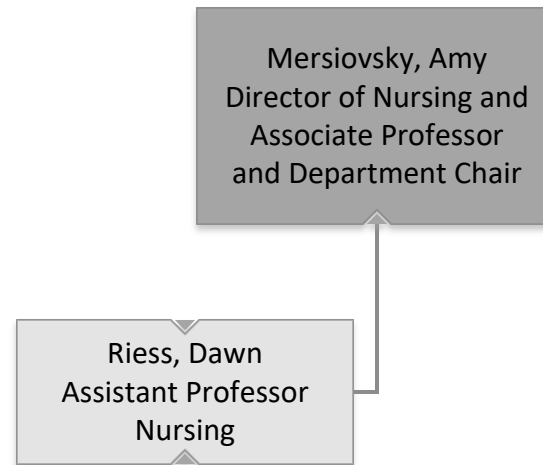


# College of Arts and Sciences Science and Mathematics





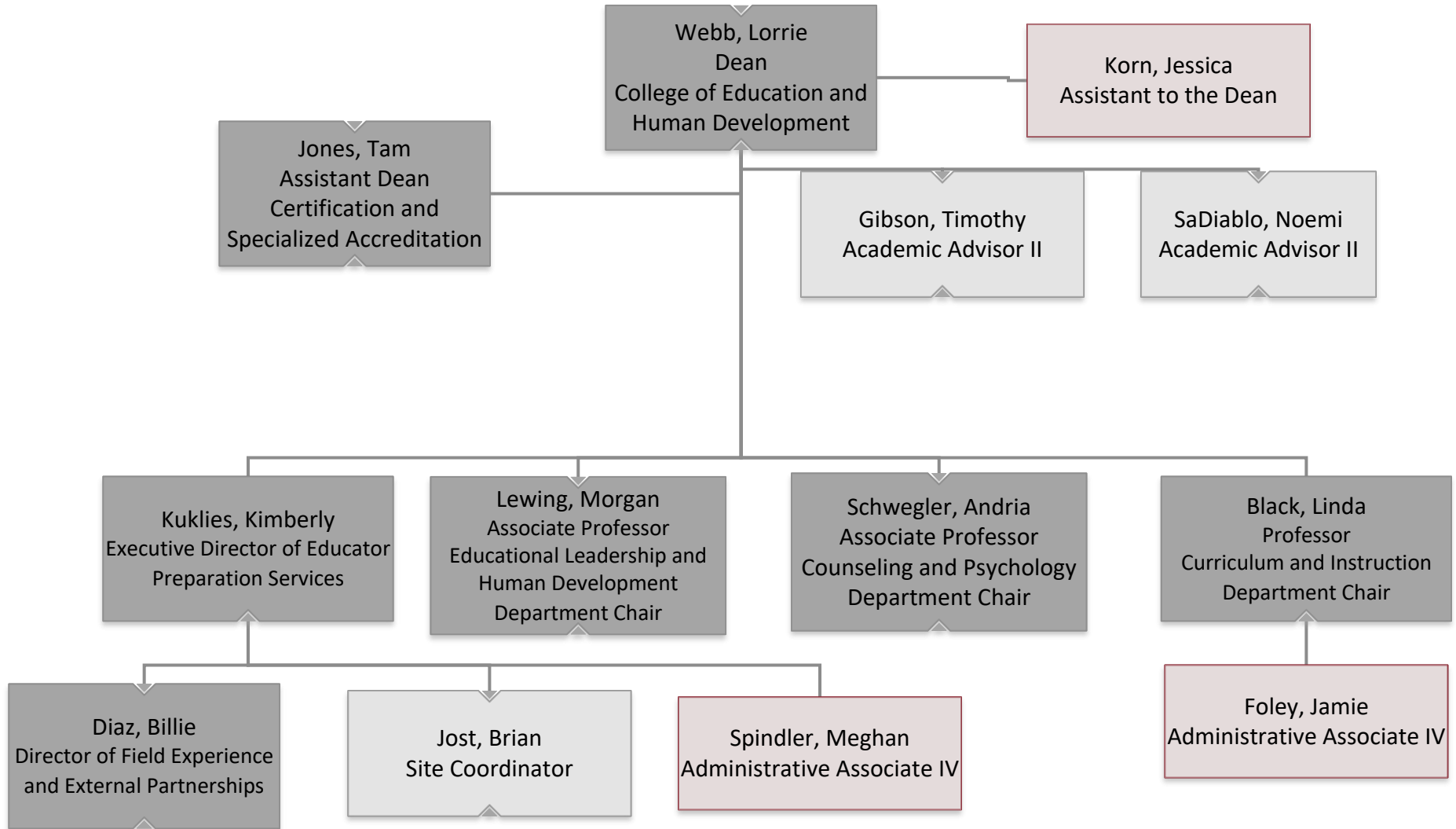
## College of Arts and Sciences Nursing





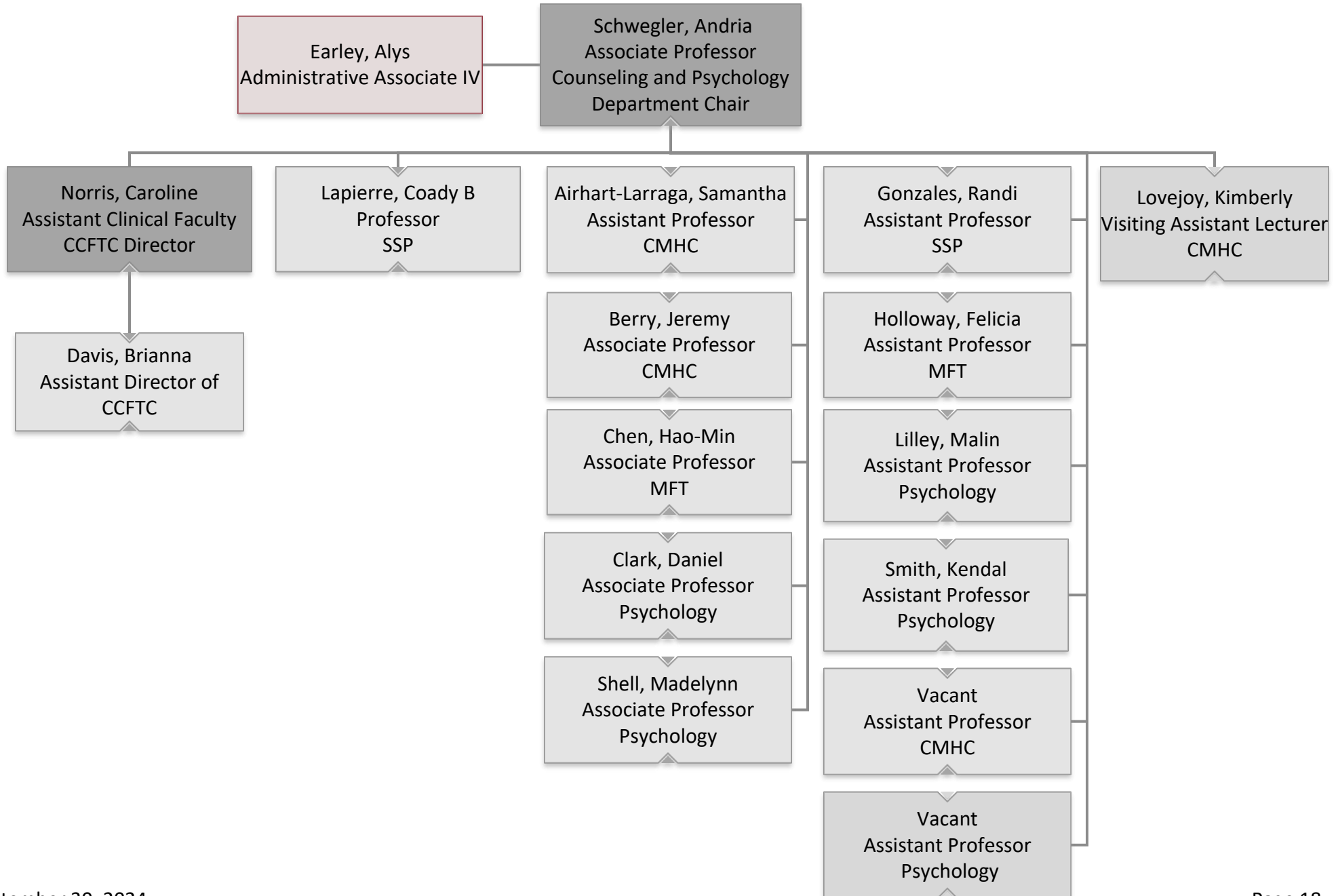


# College of Education and Human Development Counseling and Psychology



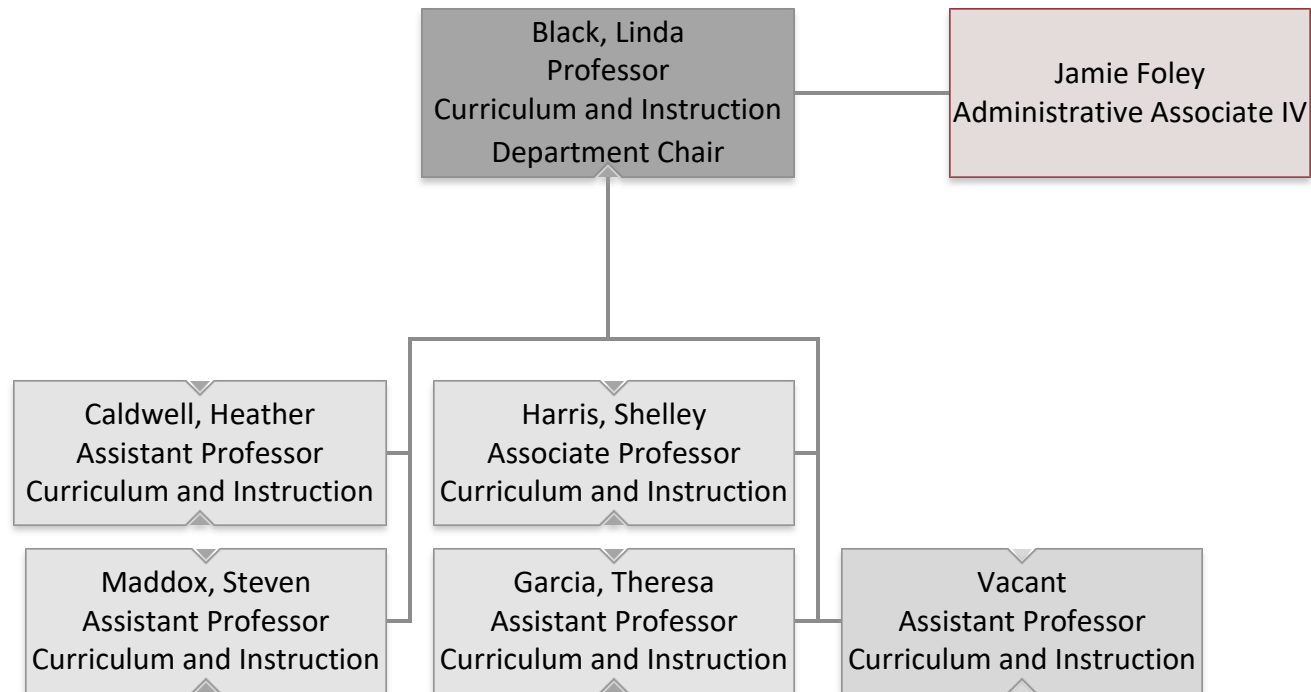


# College of Education and Human Development Counseling and Psychology



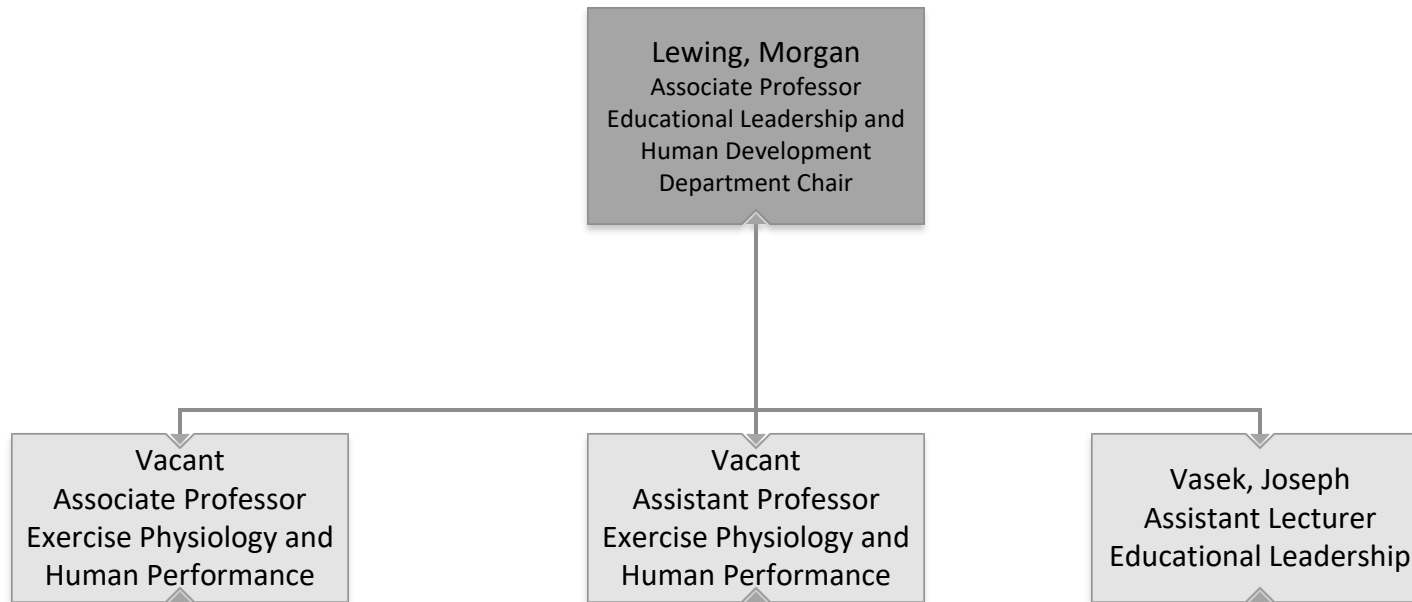


## College of Education and Human Development Curriculum and Instruction



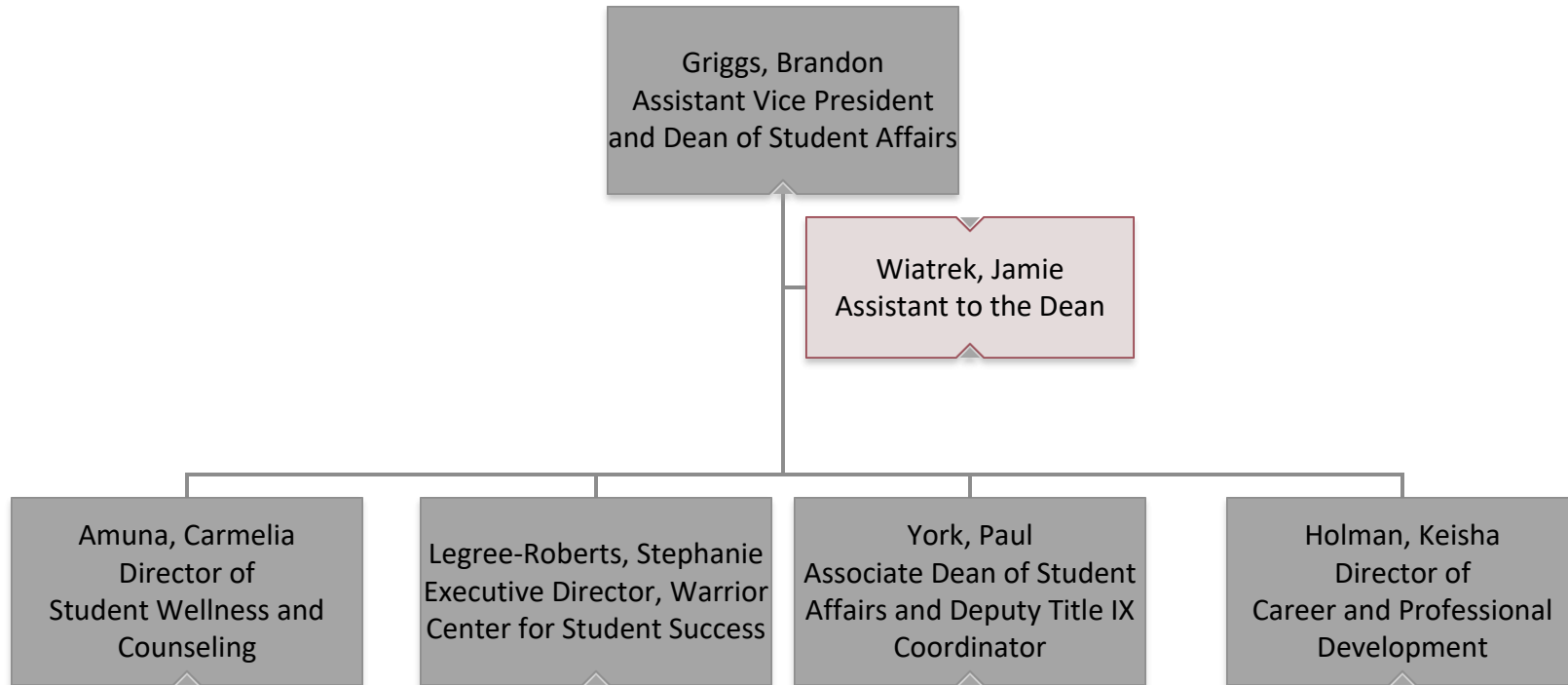


## College of Education and Human Development Educational Leadership and Human Development



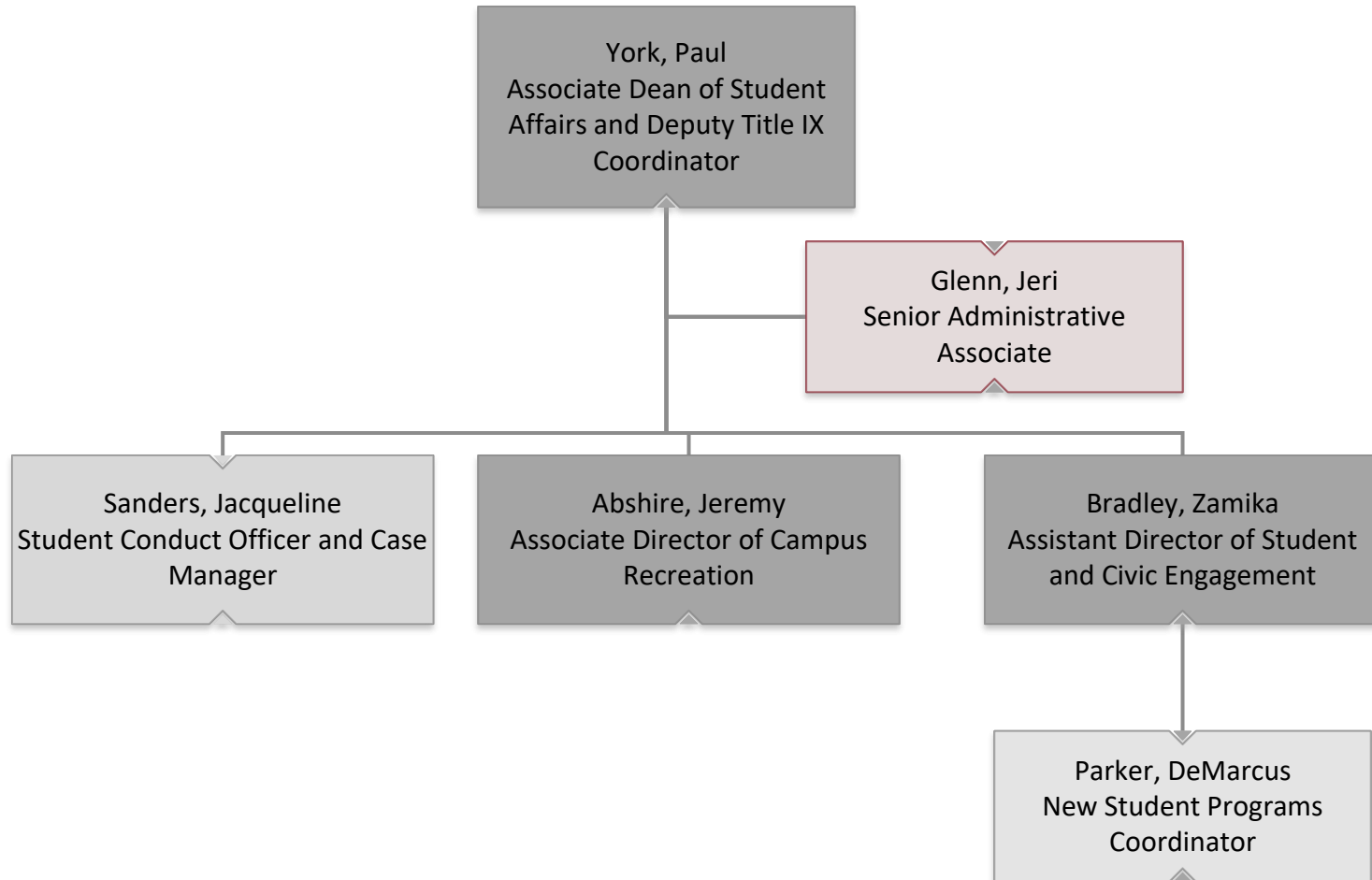


## Student Affairs



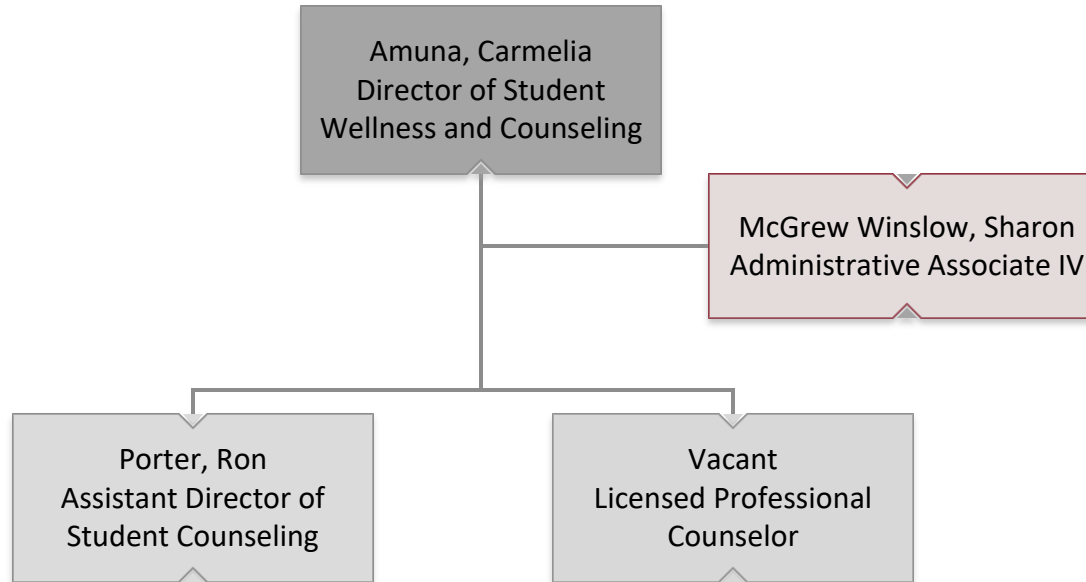


## Student Affairs Associate Dean of Student Affairs



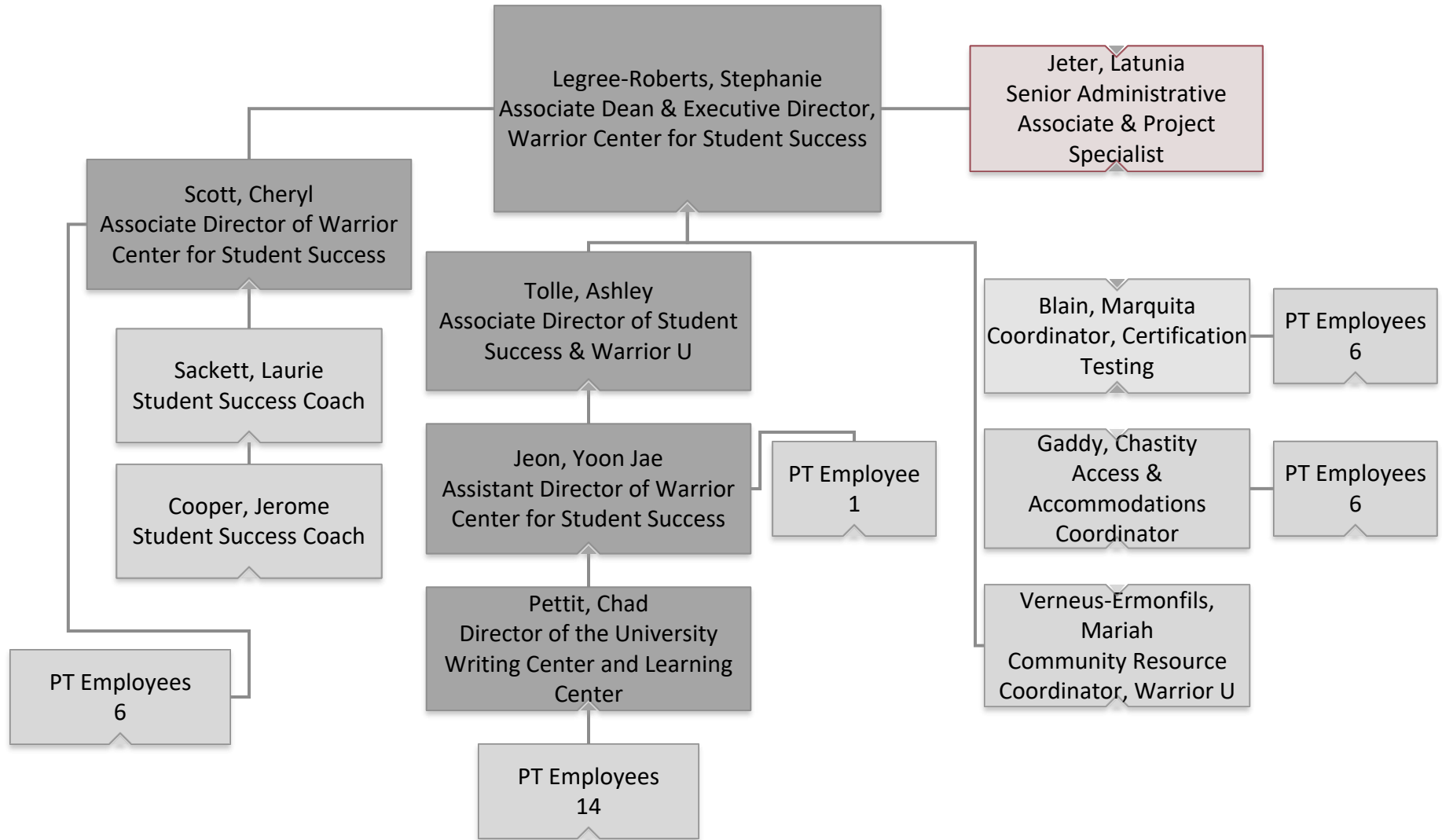


## Student Affairs Career and Professional Development





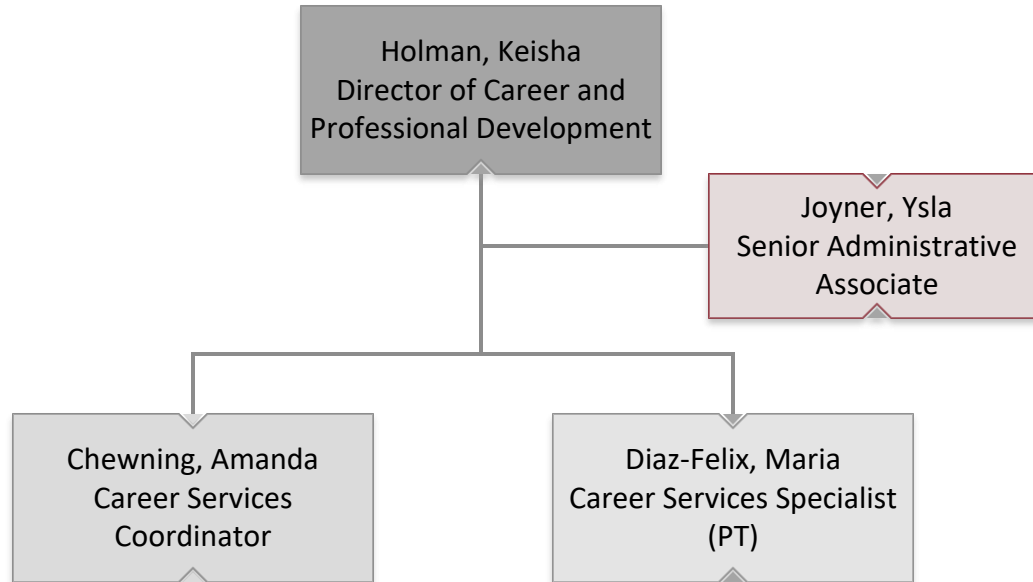
## Warrior Center for Student Success





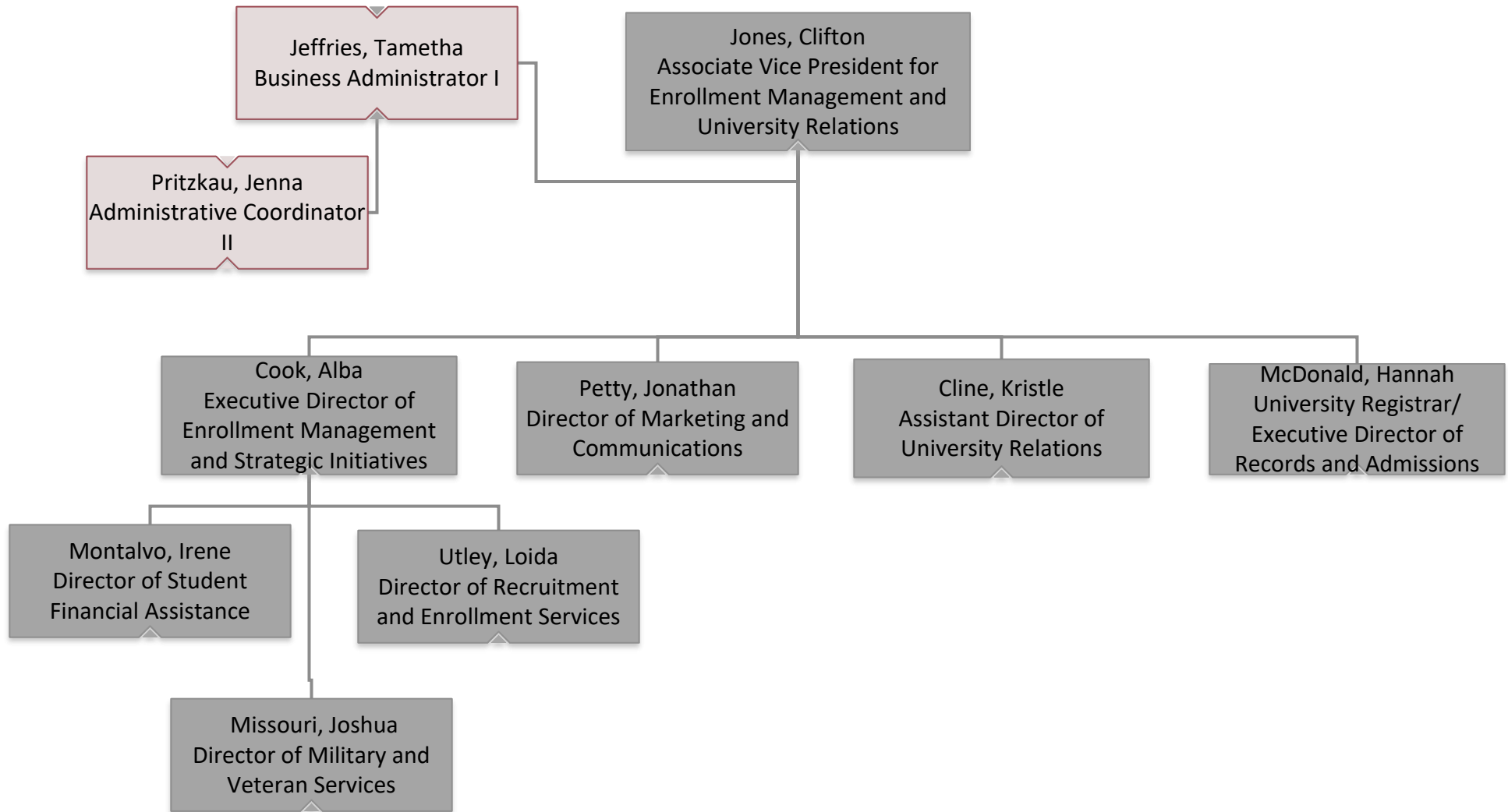


## Student Affairs Career and Professional Development



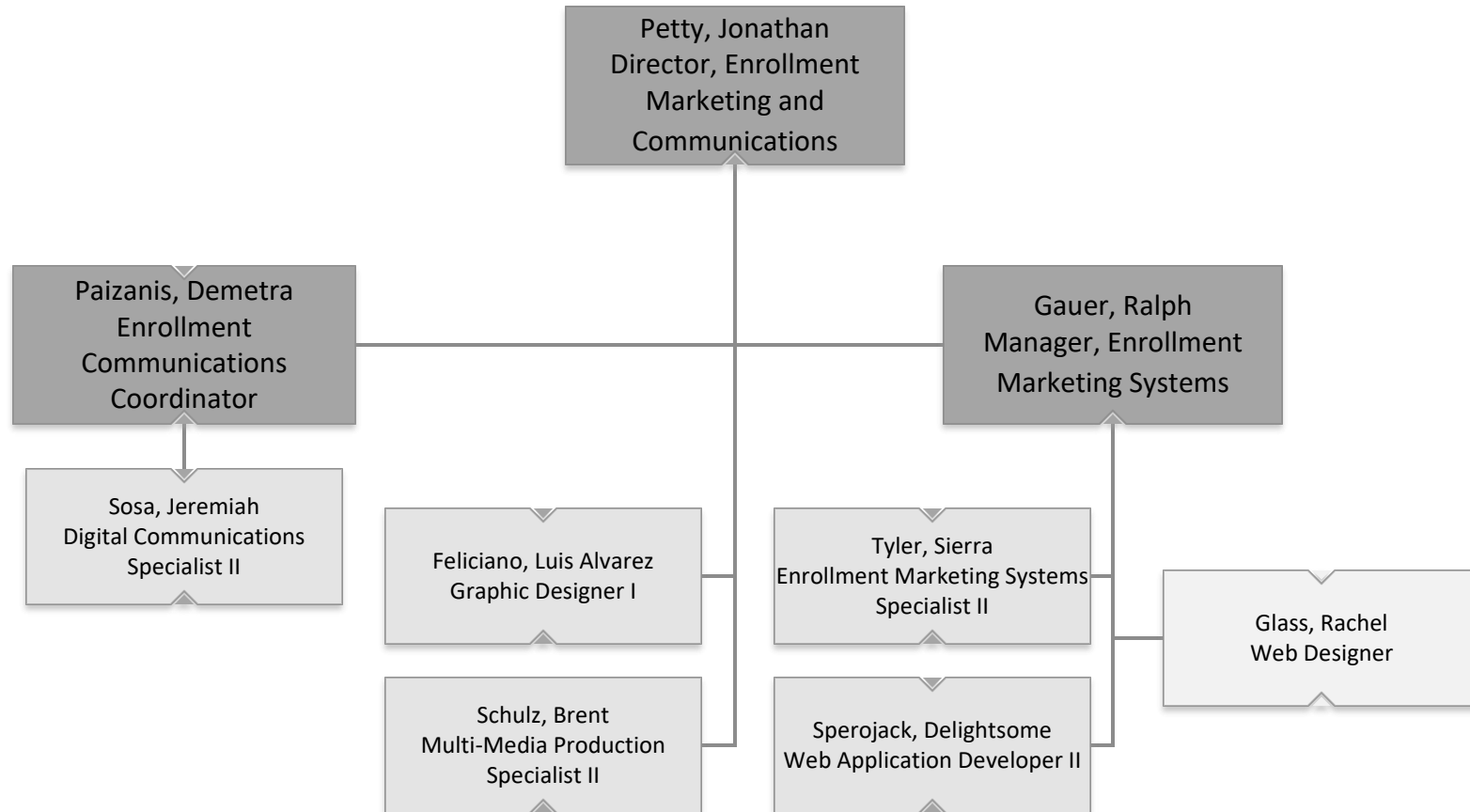


# Enrollment Management



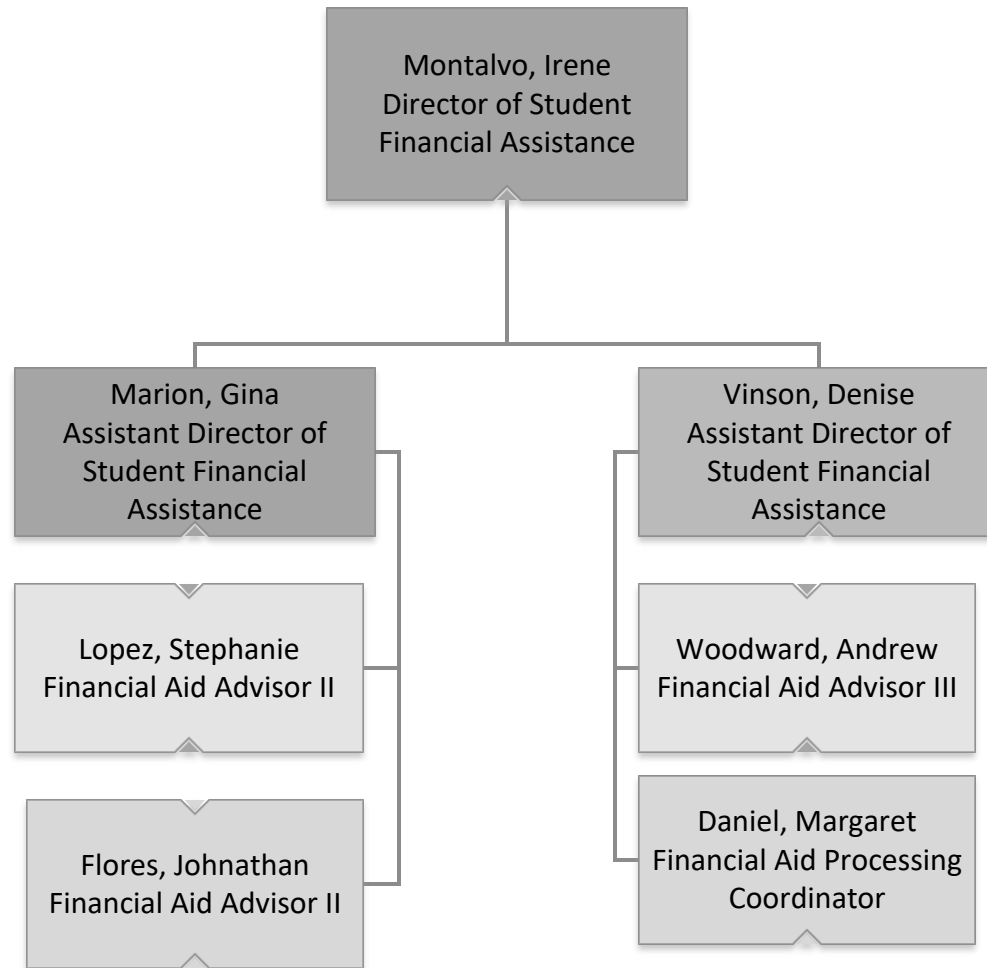


## Enrollment Marketing and Communications



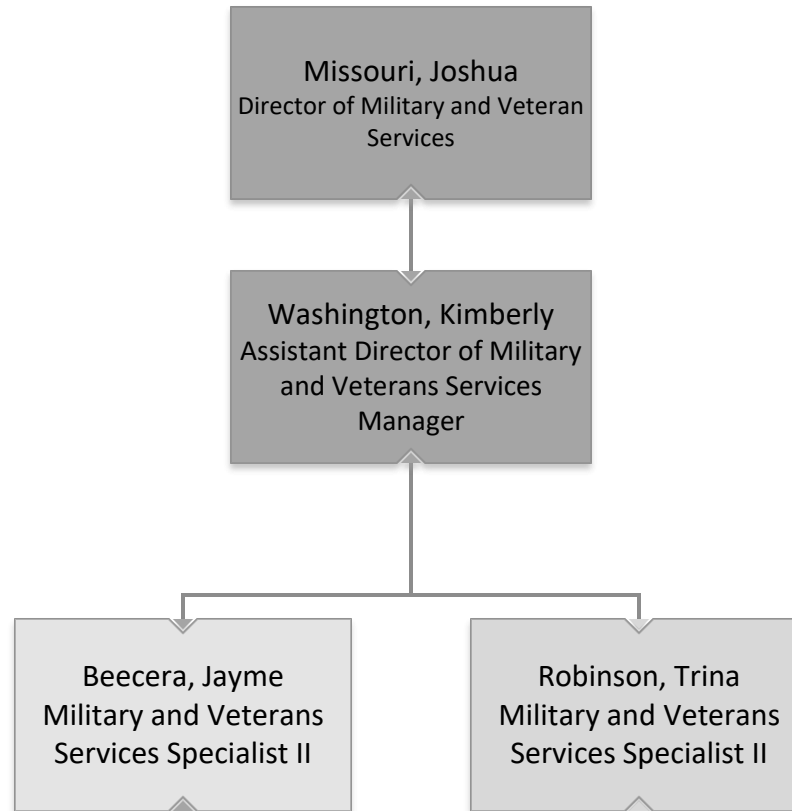


# Student Financial Assistance



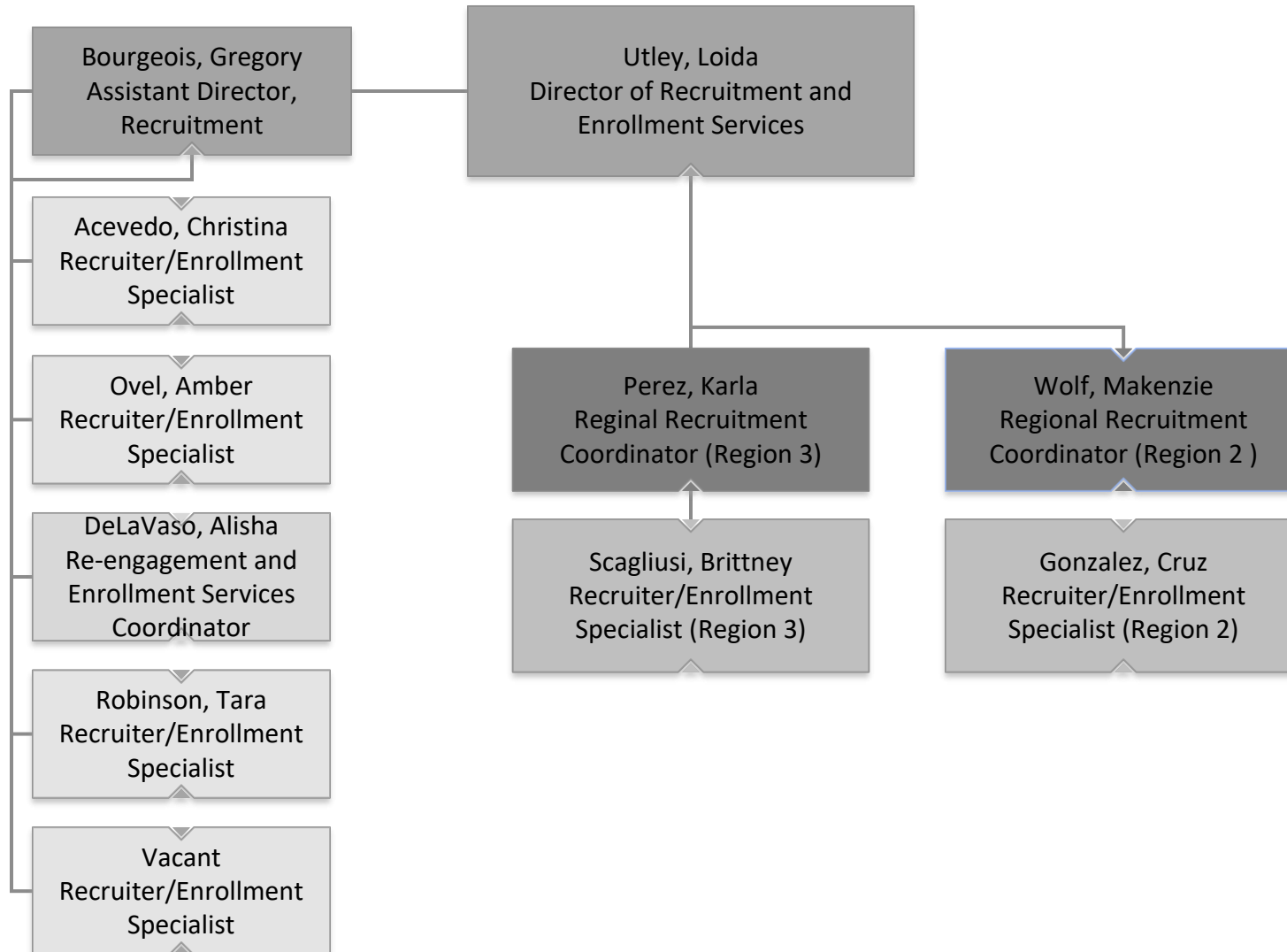


## Military and Veteran Services



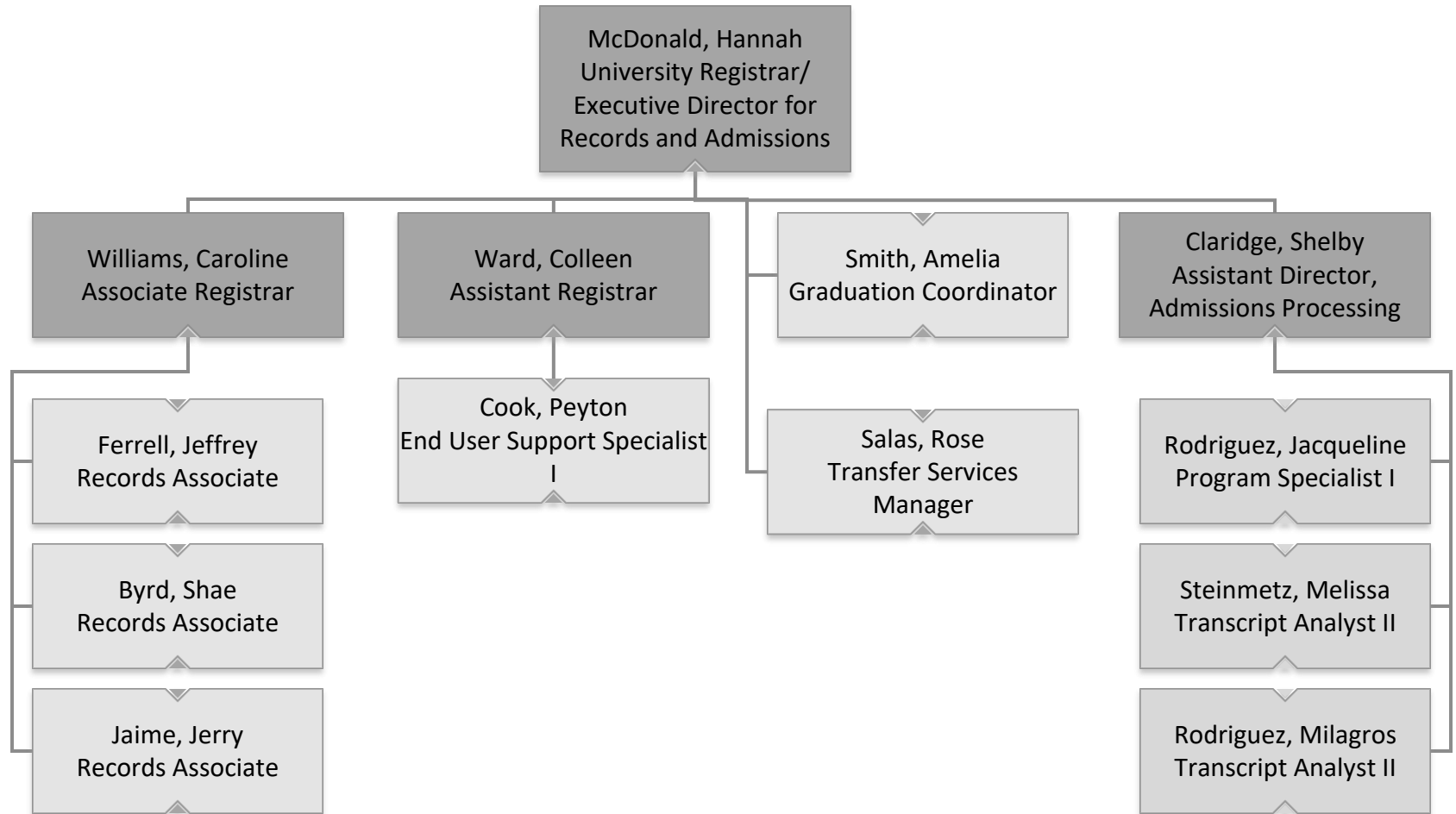


## Recruitment and Enrollment Services



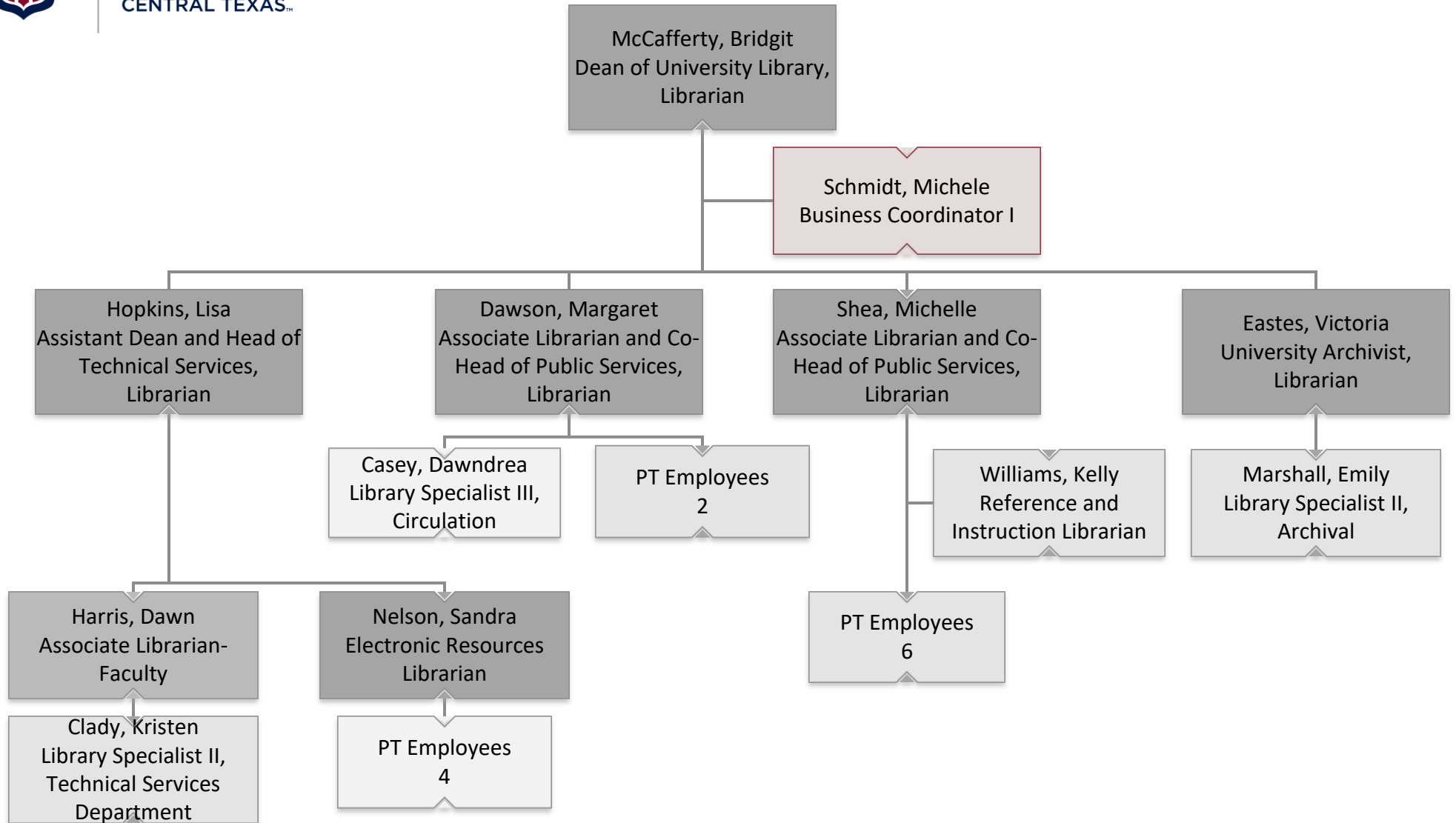


## Records and Admissions





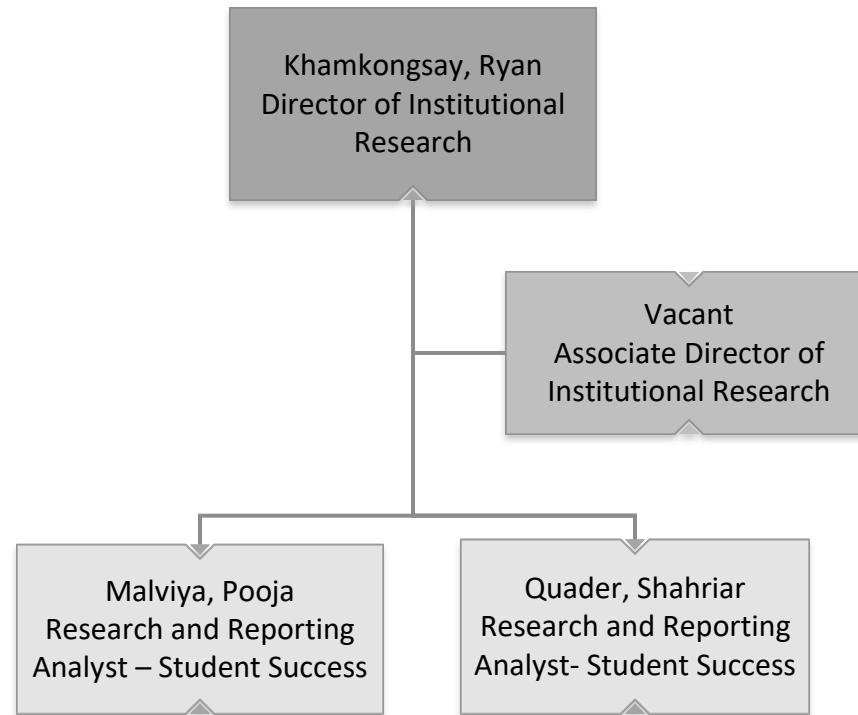
# University Library





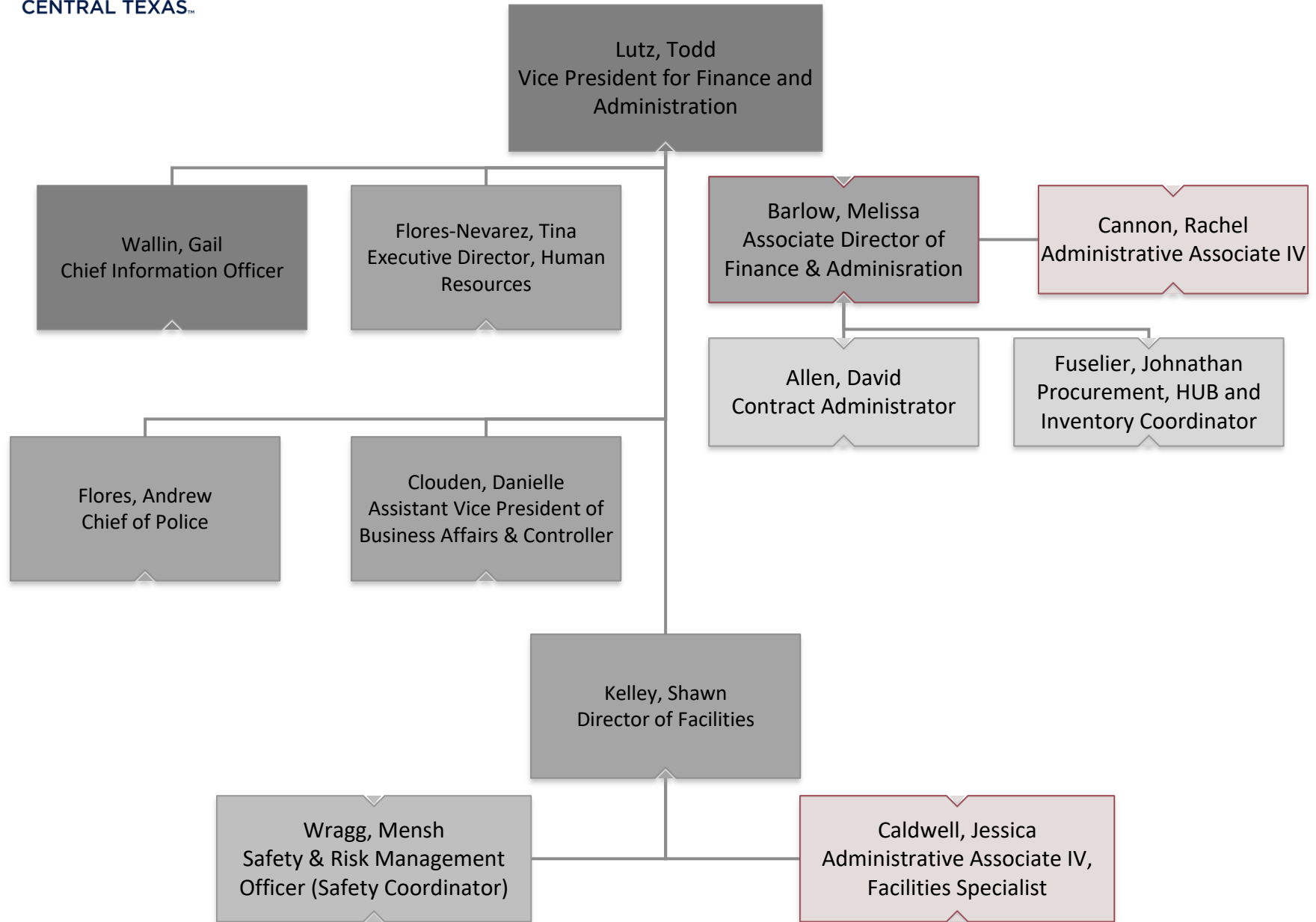


## Institutional Research and Effectiveness



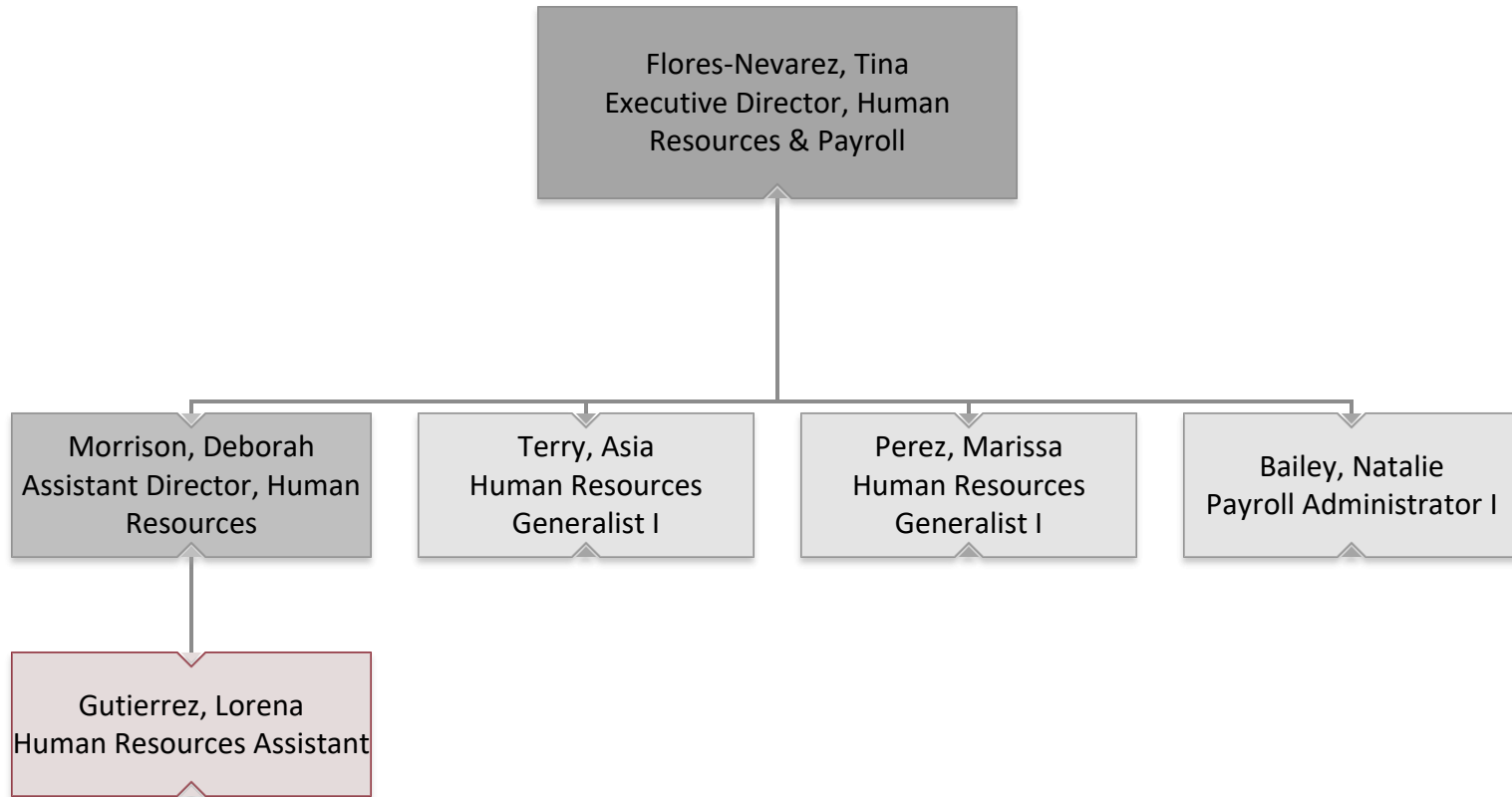


## Vice President for Finance and Administration



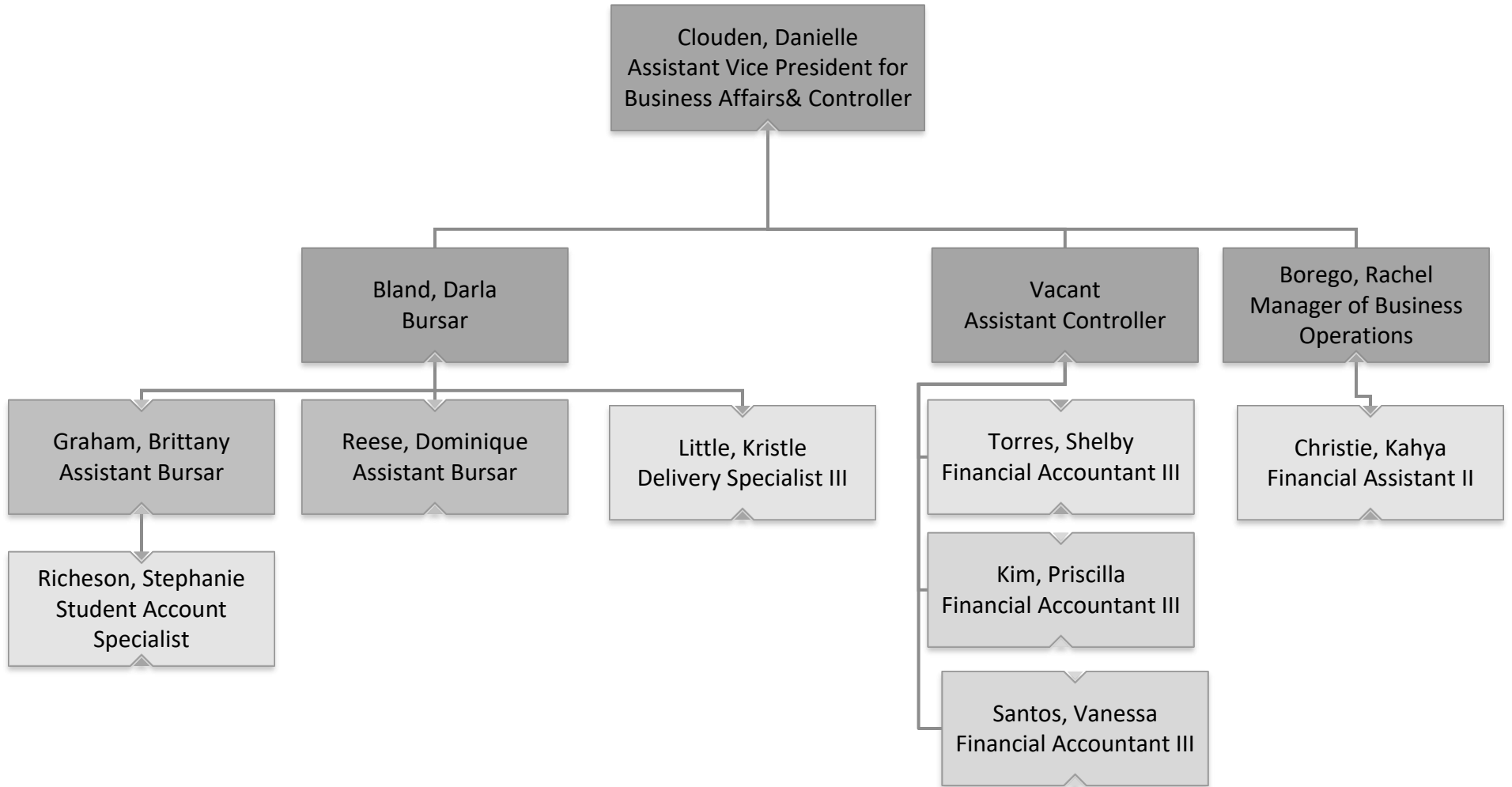


## Human Resources



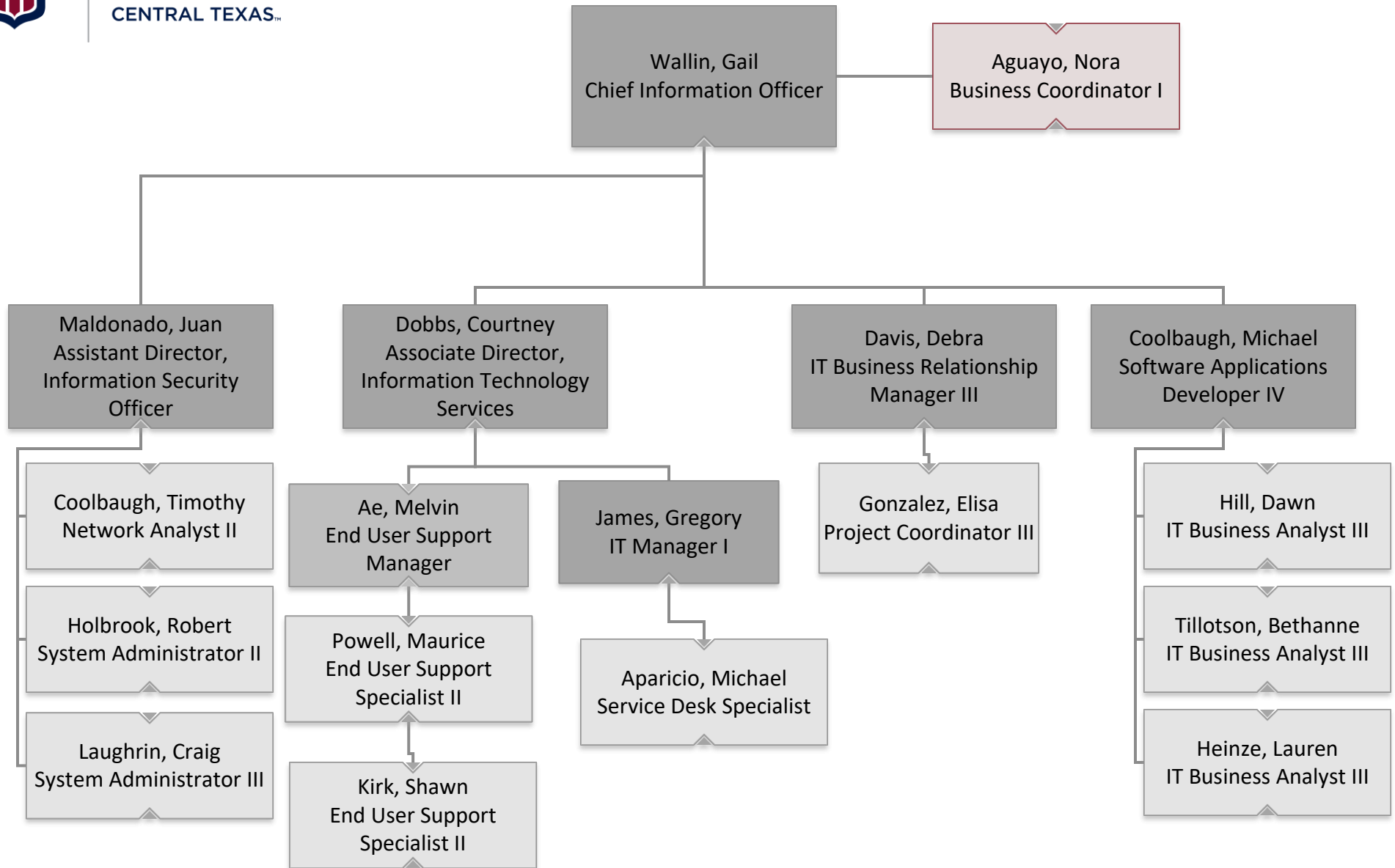


## Business Affairs



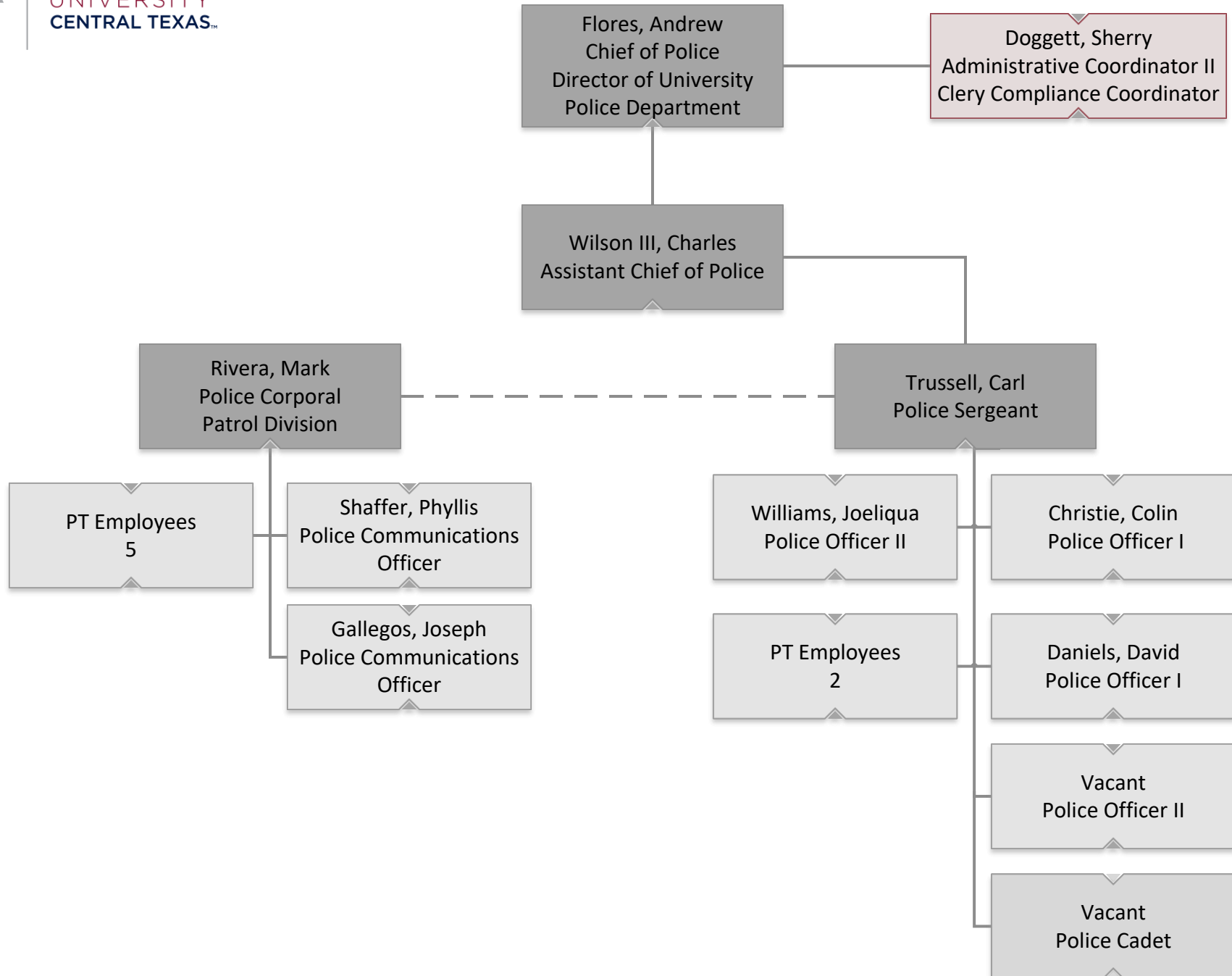


# Information Technology





# University Police





## Divison of Research

