



Organizational Chart

Office of the President

Finance and Administration

- Business Affairs
- Finance and Administration
- Facilities Services
- Human Resources
- Information Technology
- University Police

President

- University Relations

Provost

Academic Affairs

College of Arts and Sciences

- Humanities
- Nursing
- Science and Mathematics
- Social Sciences
- Social Work

College of Business Administration

- Accounting, Finance, and Economics
- Computer Information Systems
- Management and Marketing

College of Education and Human Development

- Counseling and Psychology
- Curriculum and Instruction
- Educational Leadership and Human Development

Division of Research and Innovation

Enrollment Management

- Marketing and Communications
- Military and Veteran Services
- Records and Admissions
- Recruitment and Enrollment Services
- Student Financial Assistance

Graduate School

Institutional Data and Reporting

Student Affairs

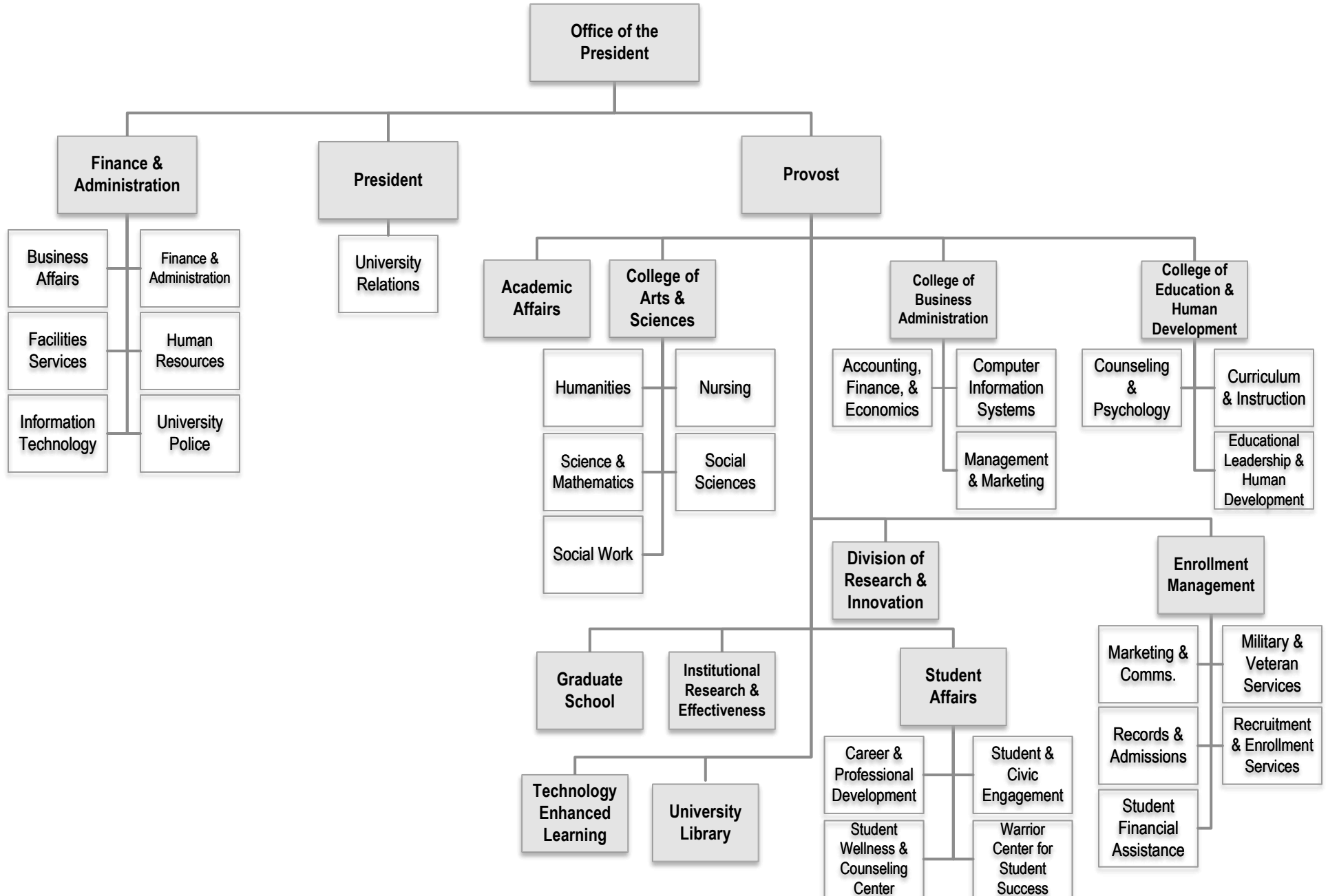
- Career and Professional Development
- Student & Civic Engagement
- Student Wellness and Counseling Center
- Warrior Center for Student Success

Technology Enhanced Learning

University Library

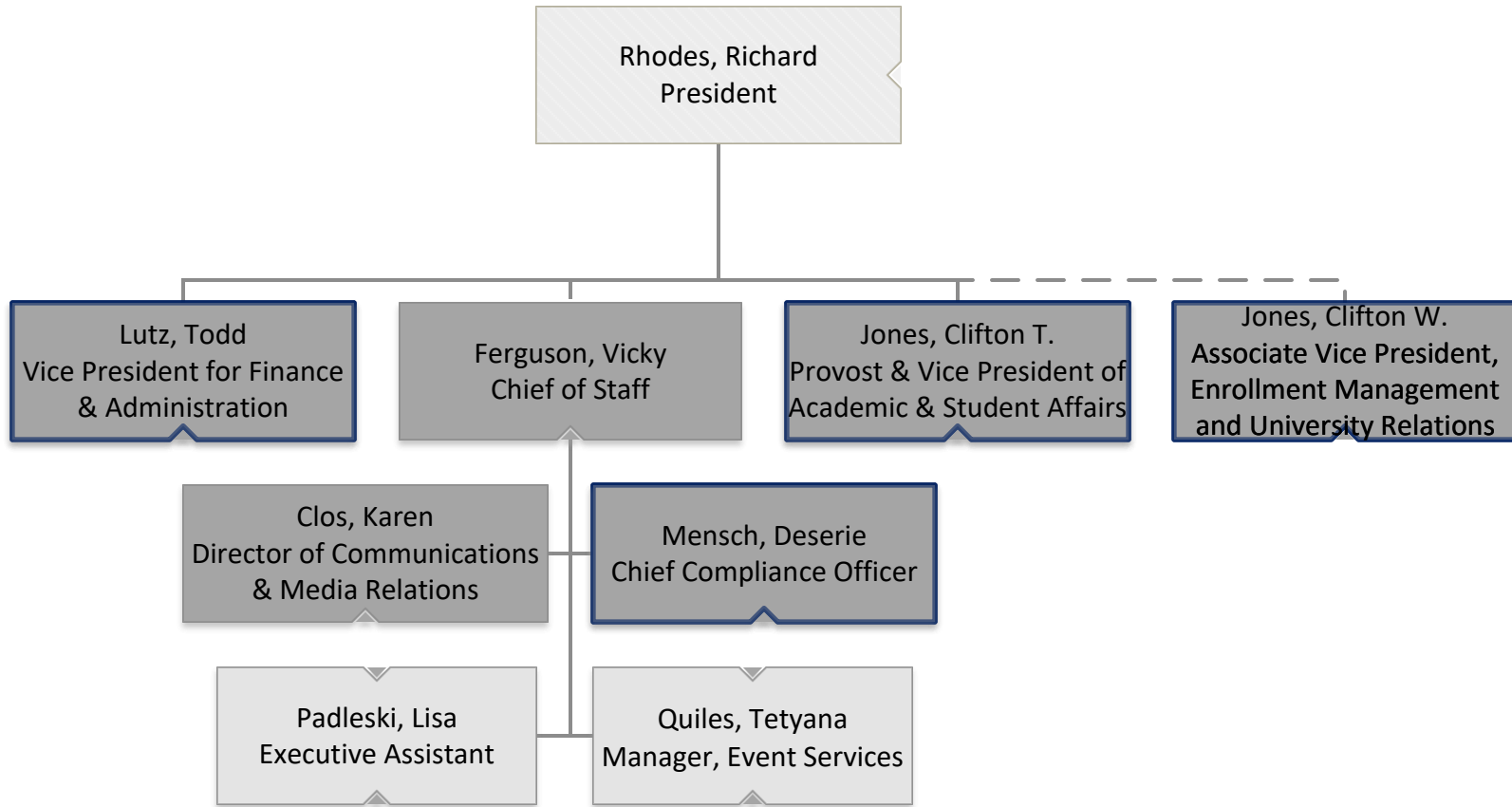


Organizational Chart



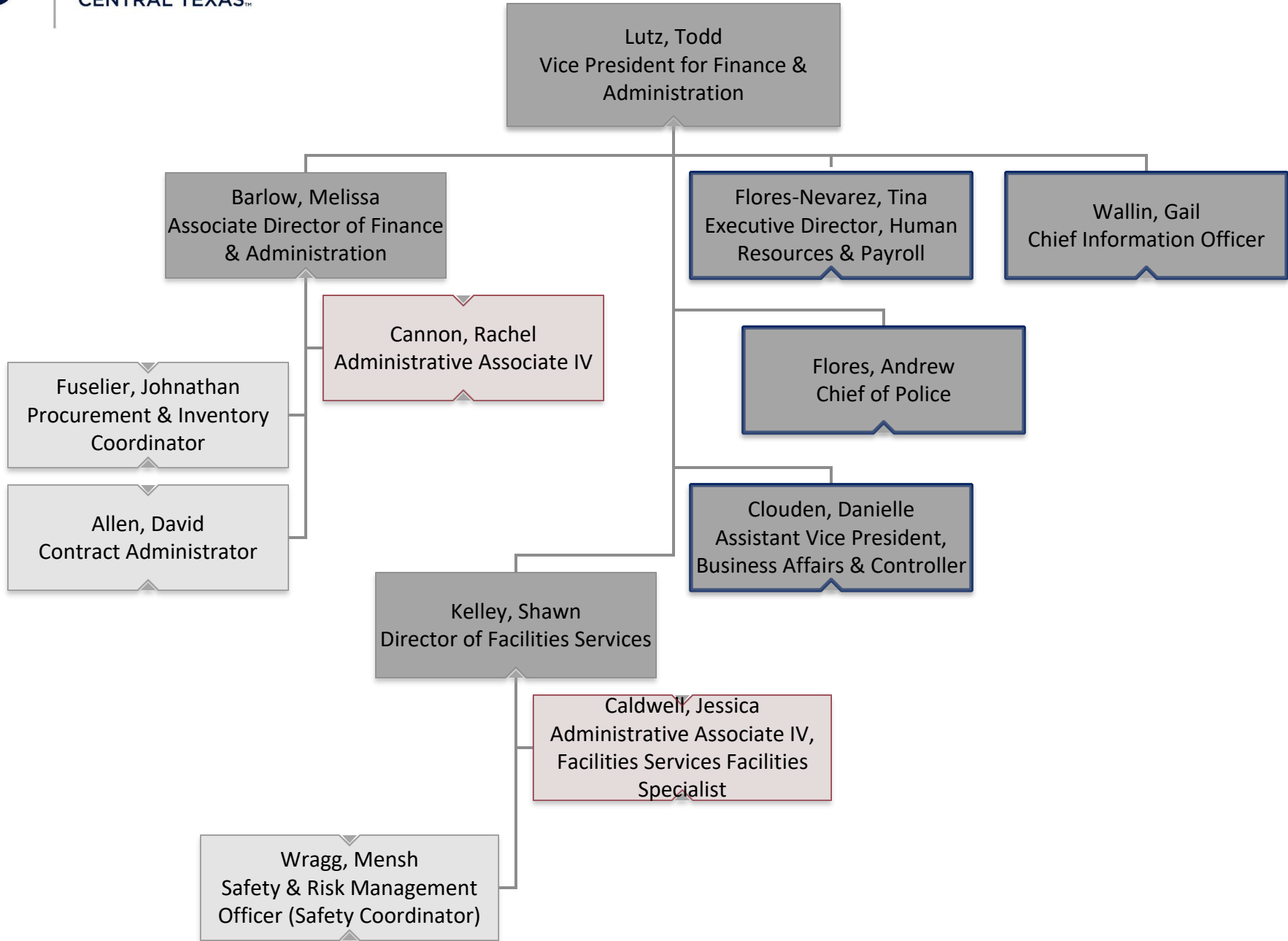


Office of the President



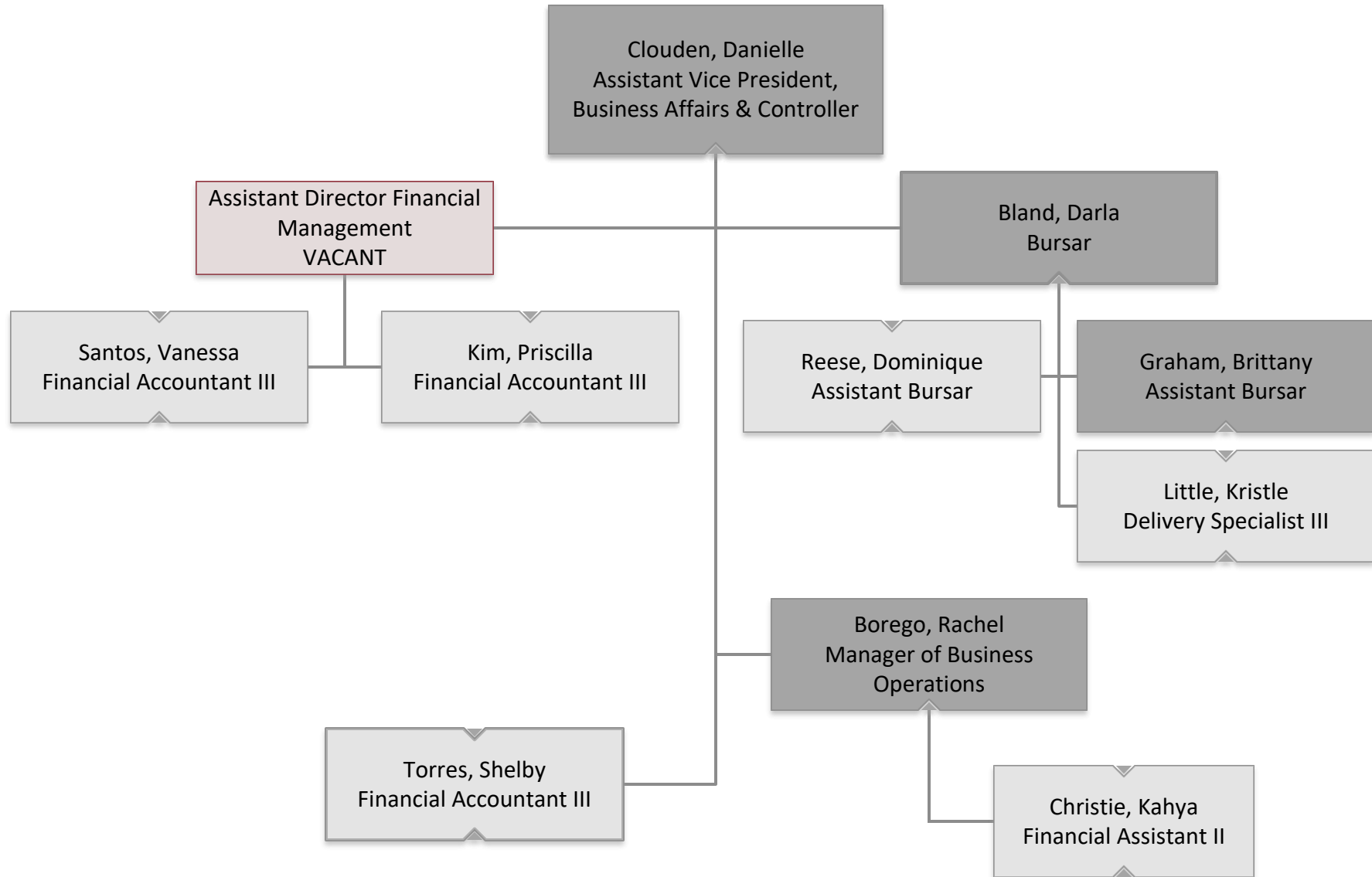


Finance and Administration



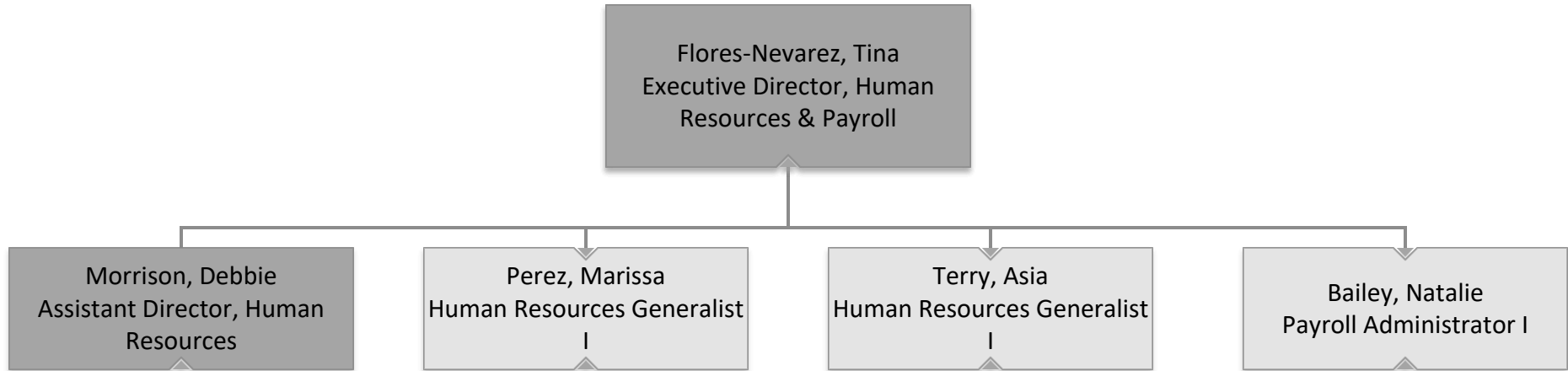


Business Affairs



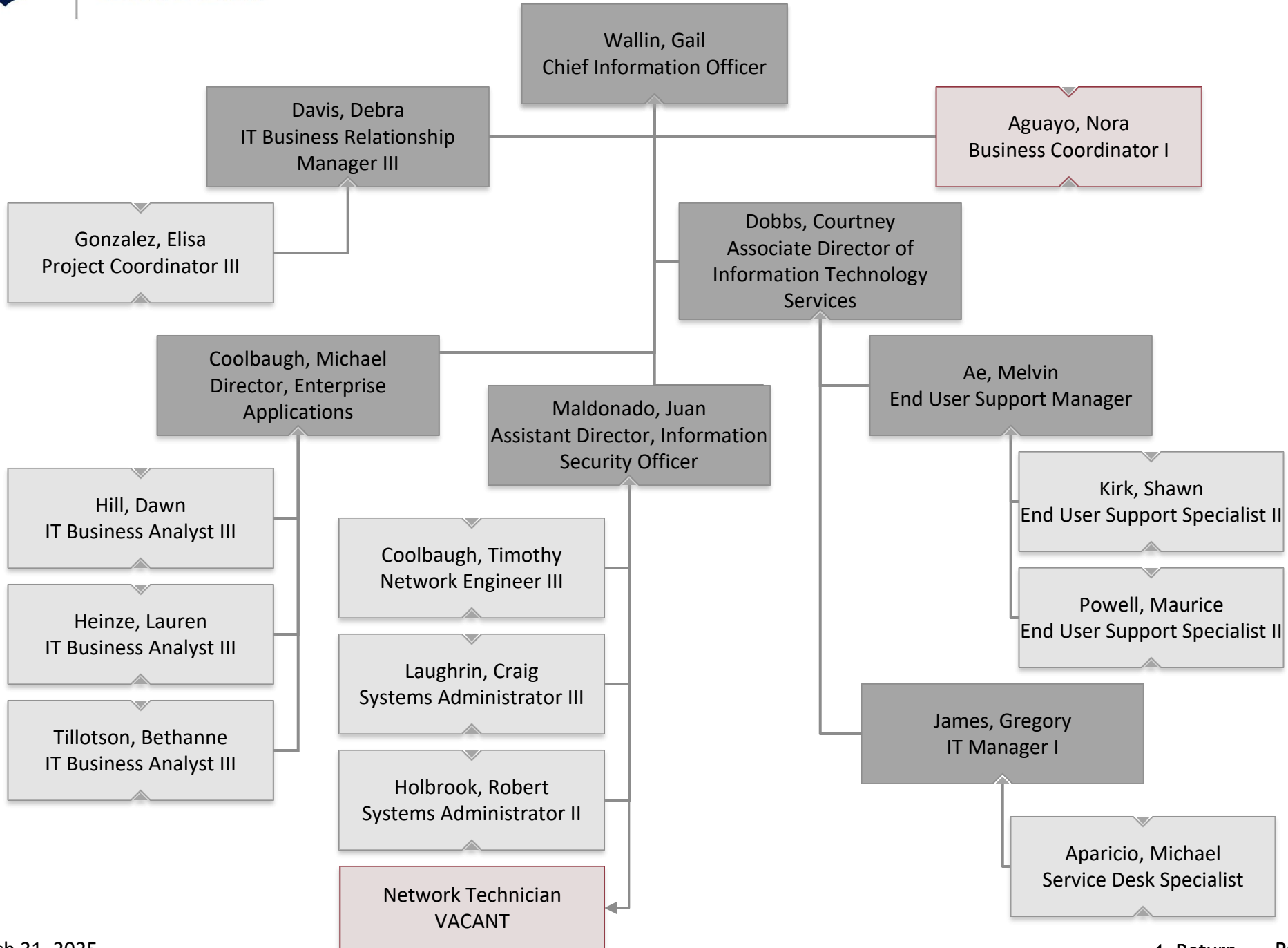


Human Resources



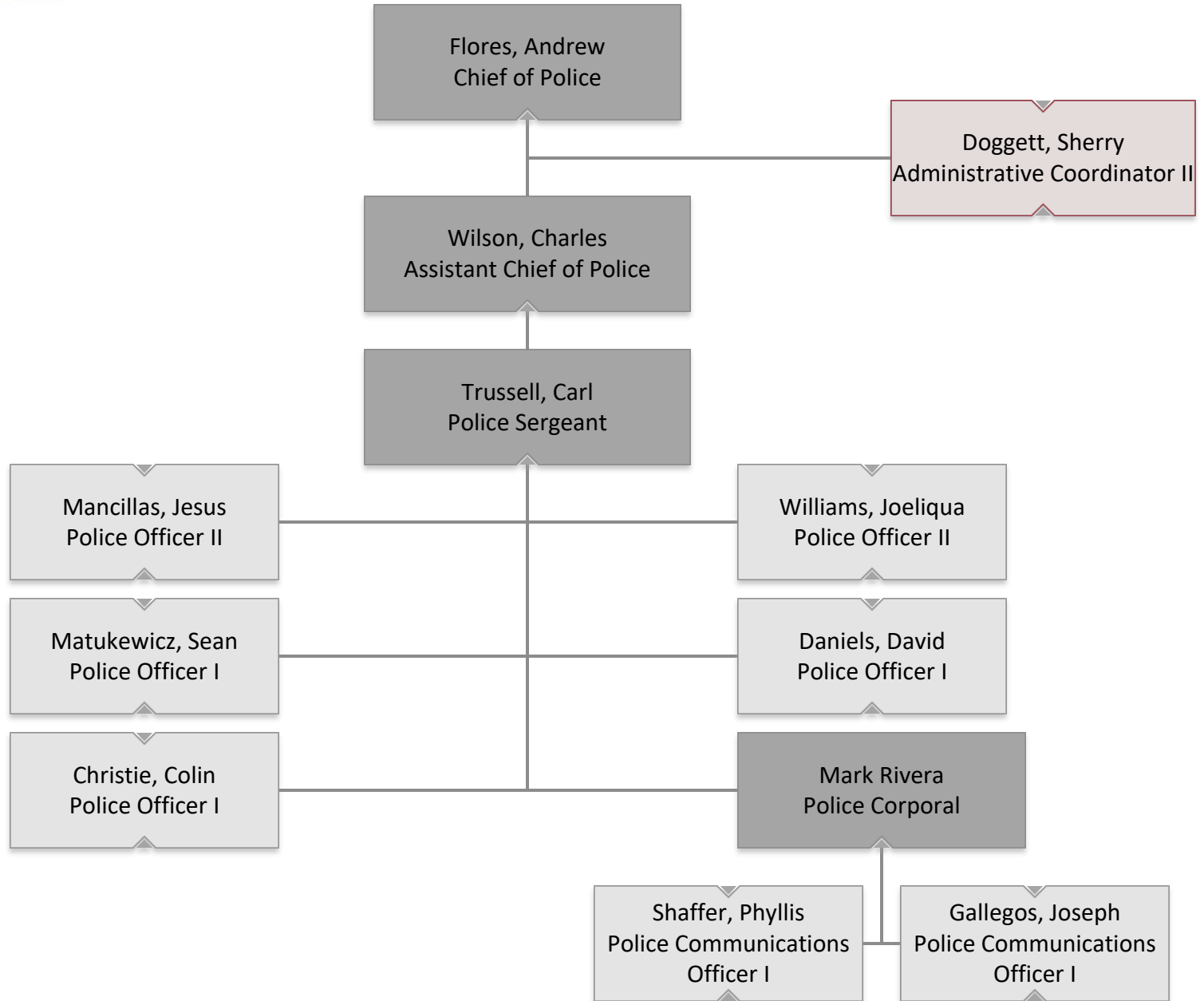


Information Technology



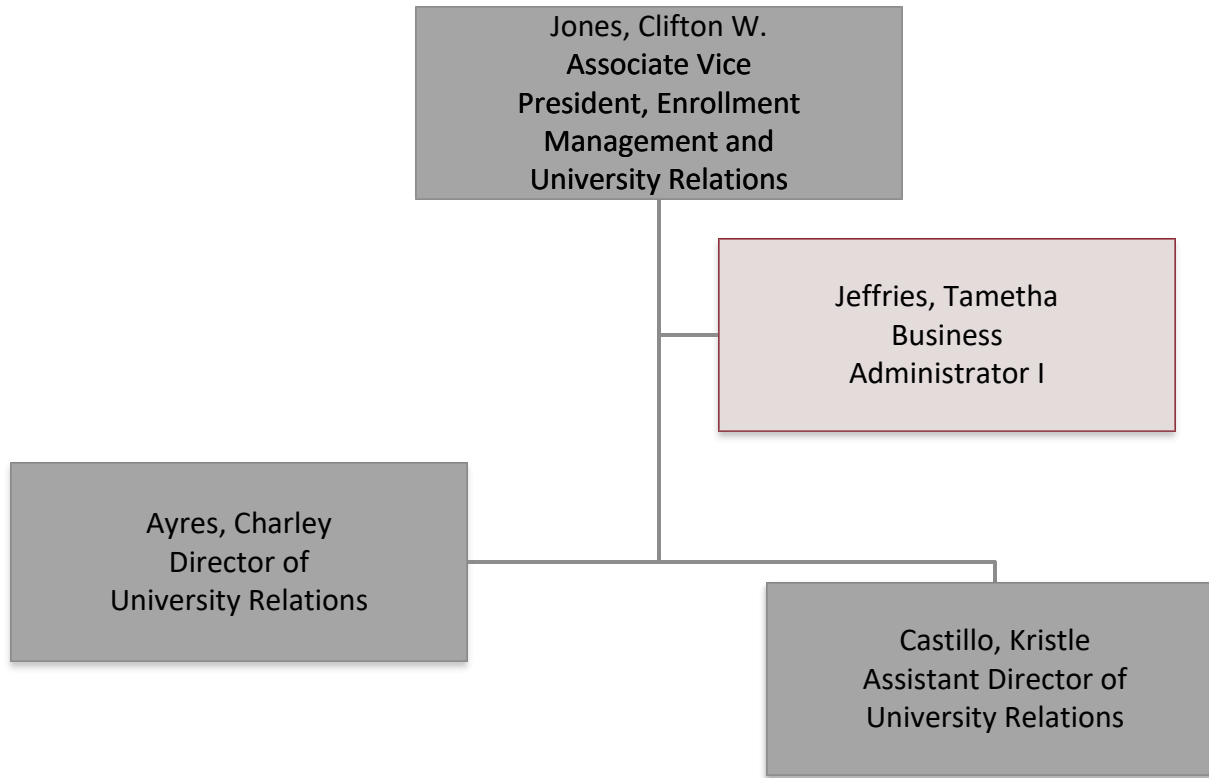


University Police



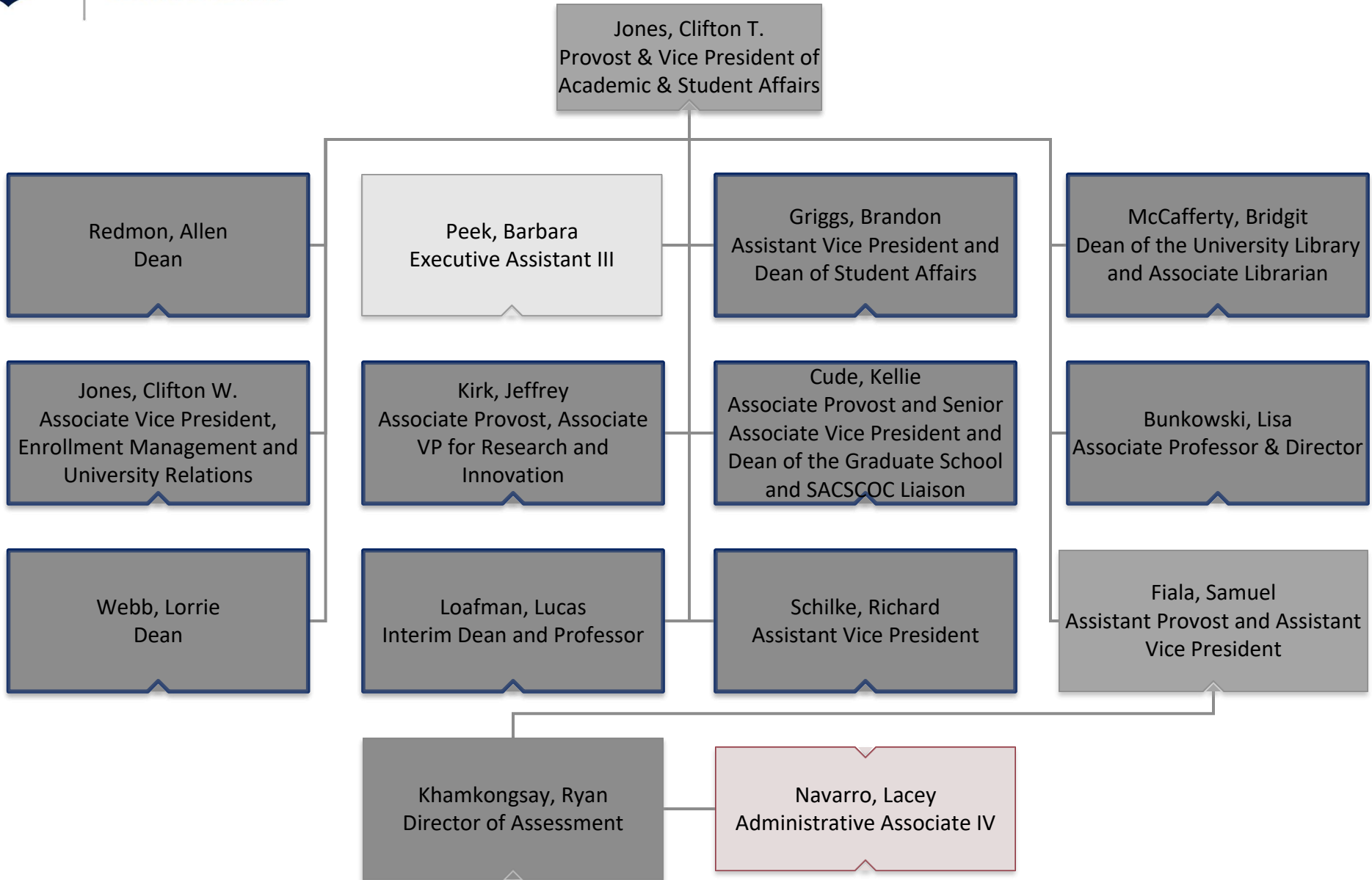


University Relations



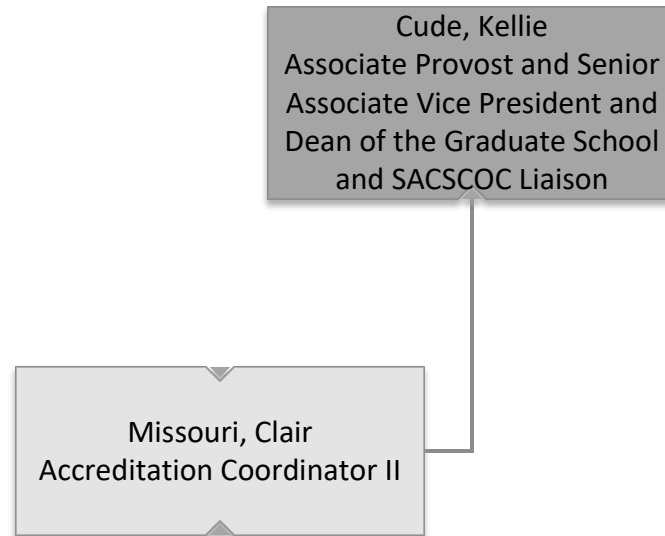


Provost



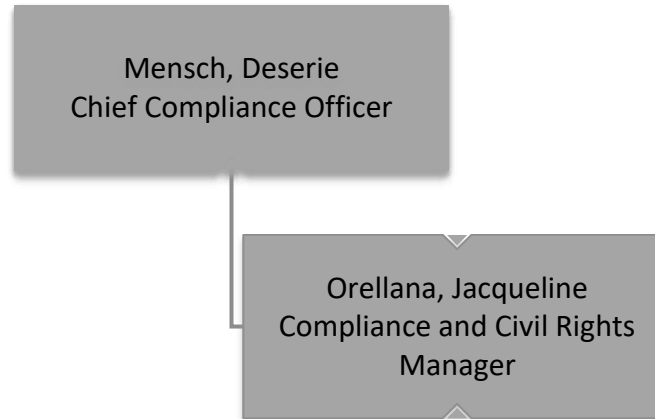


Academic Affairs



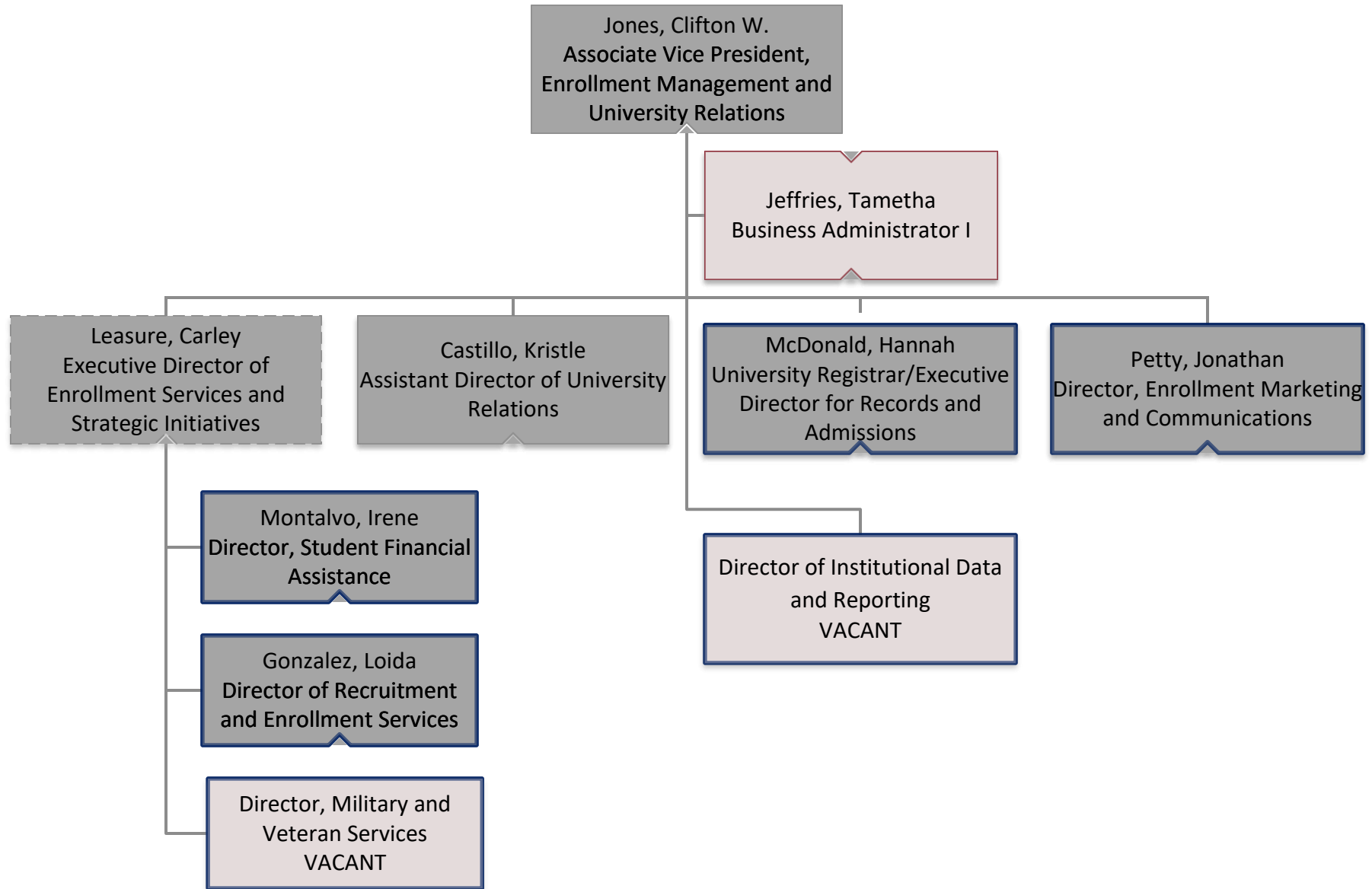


Compliance Office



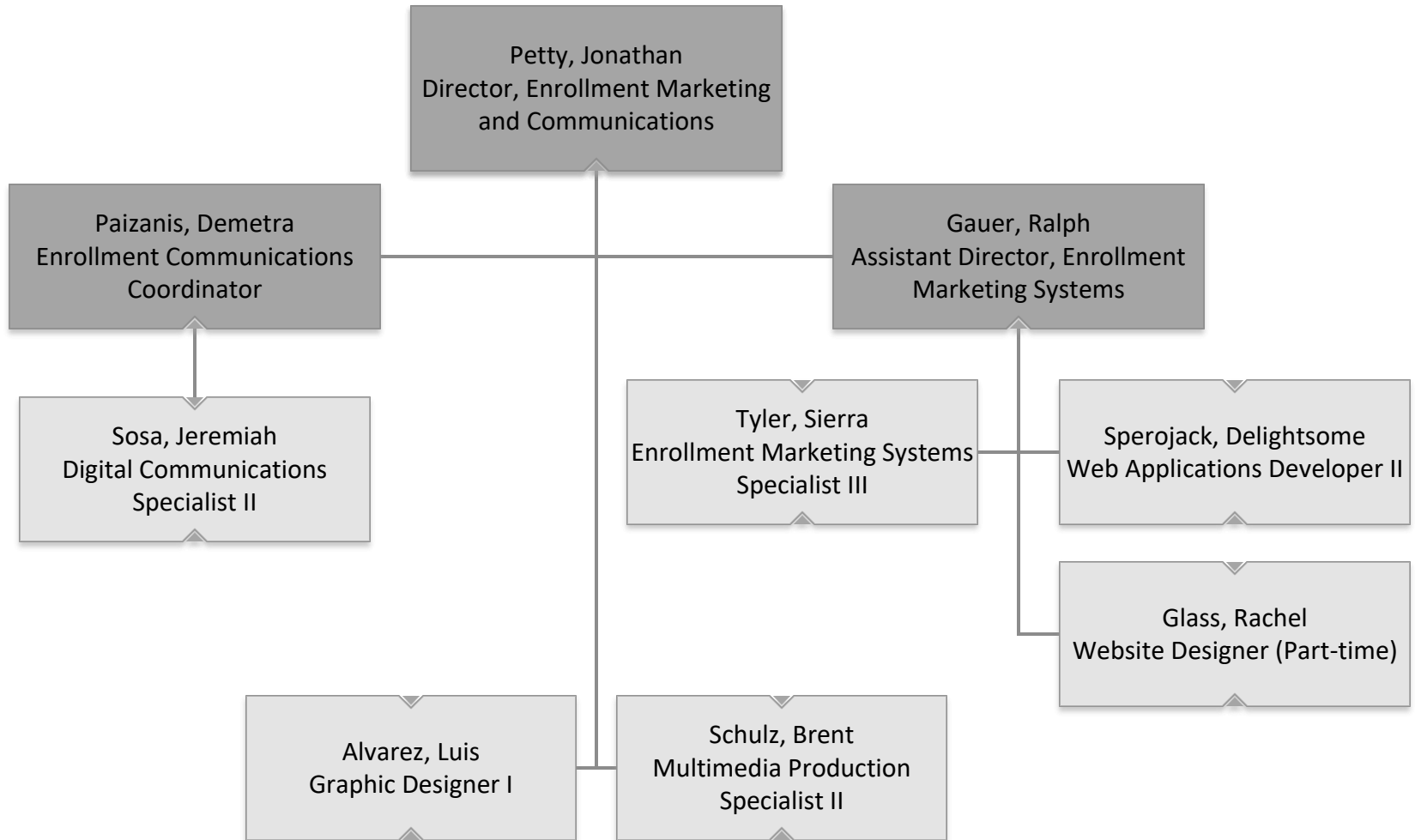


Enrollment Management



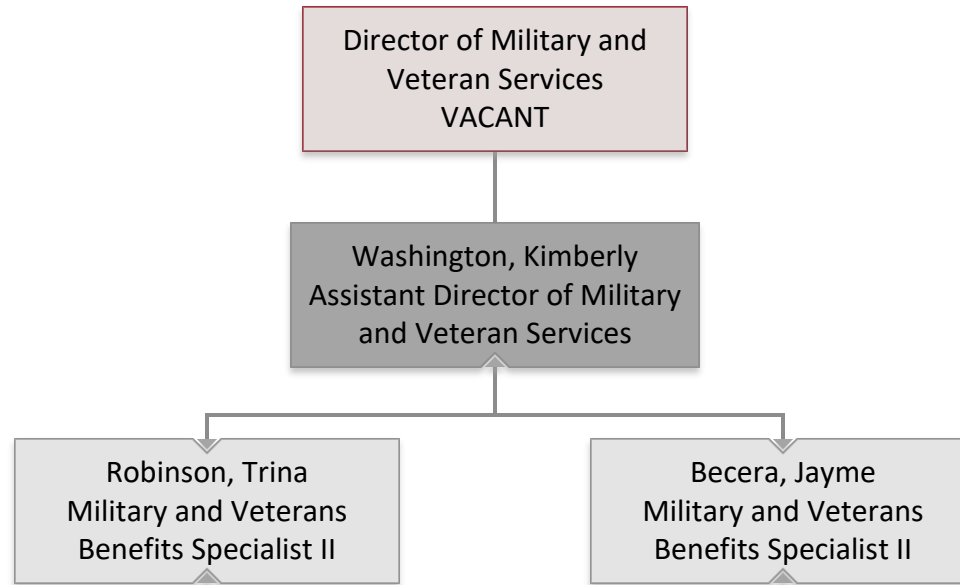


Enrollment Marketing and Communications



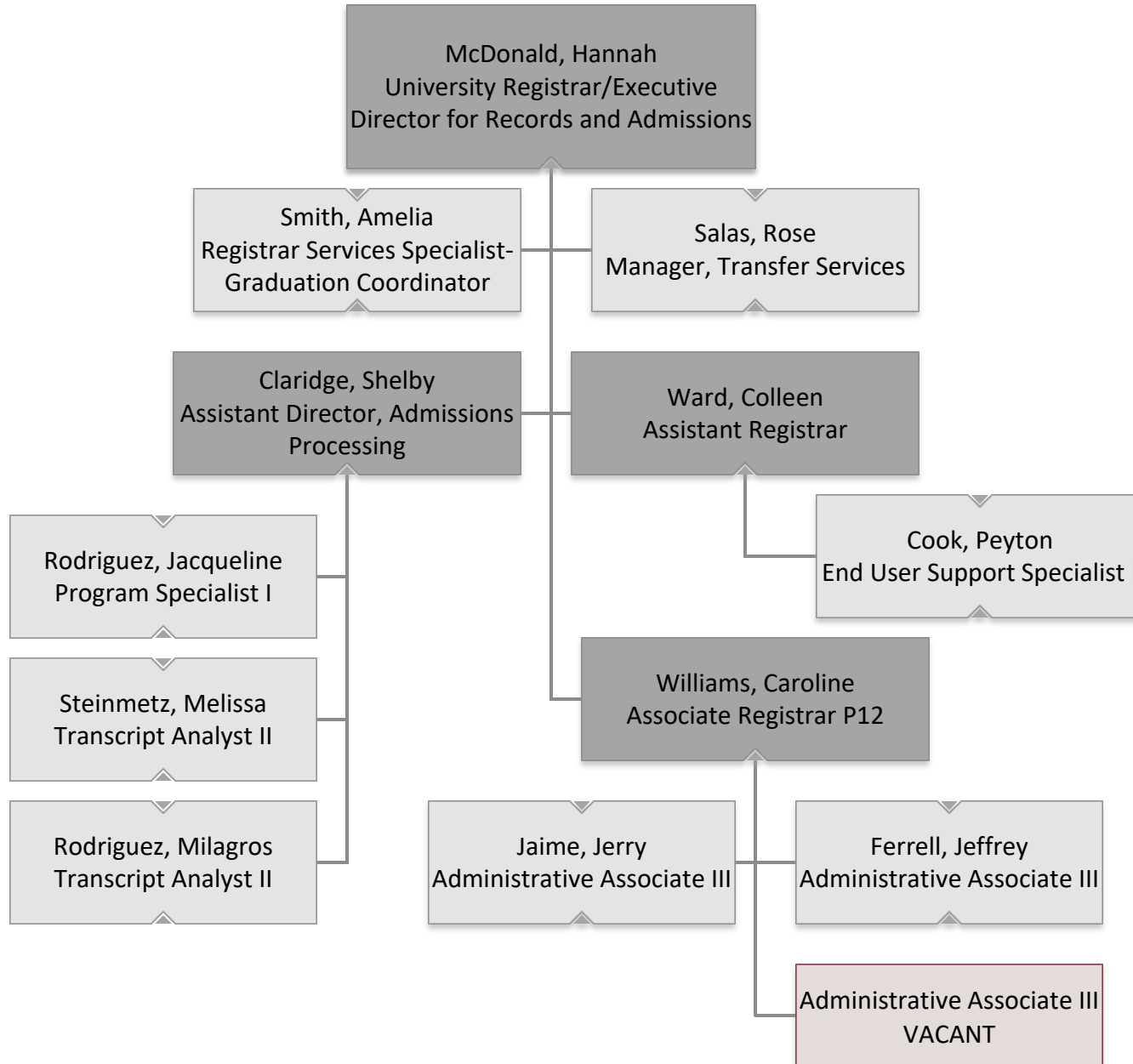


Military and Veteran Services



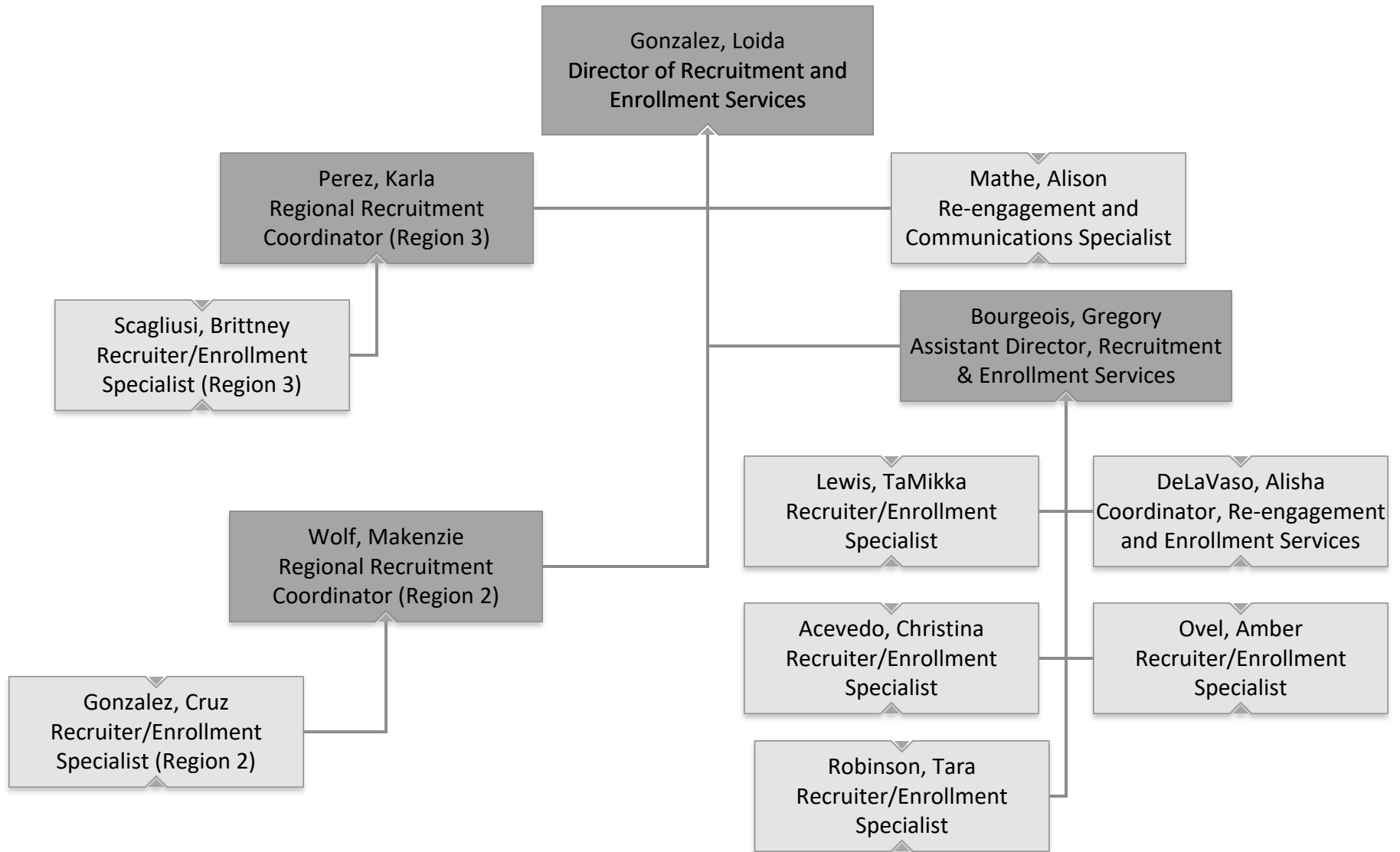


Records and Admissions



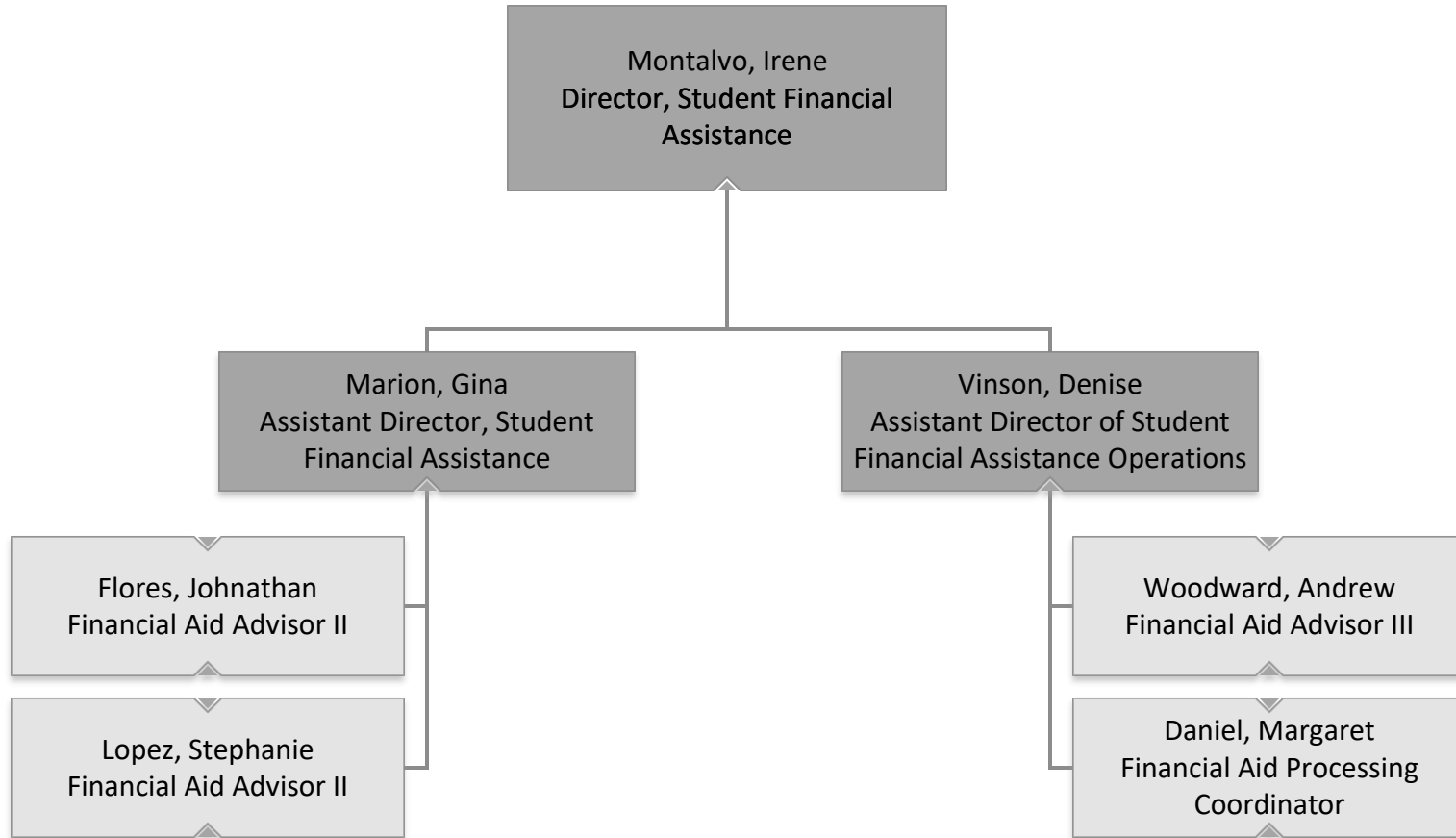


Recruitment and Enrollment Services



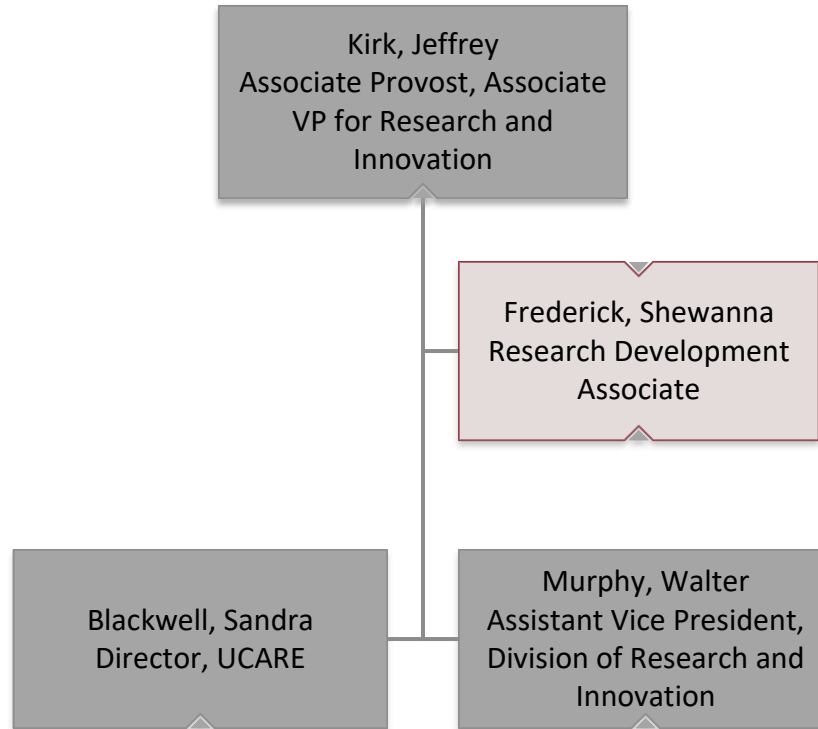


Student Financial Assistance



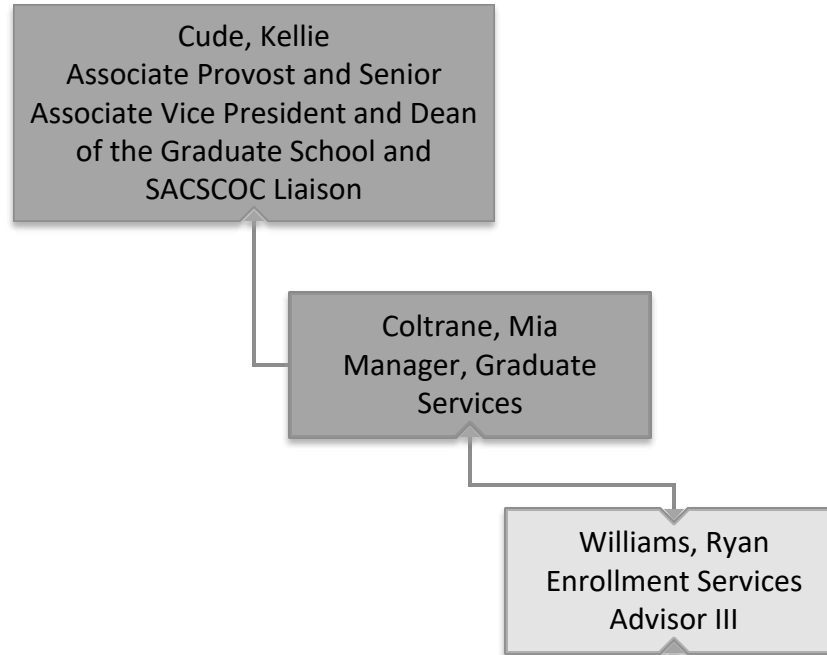


Division of Research & Innovation



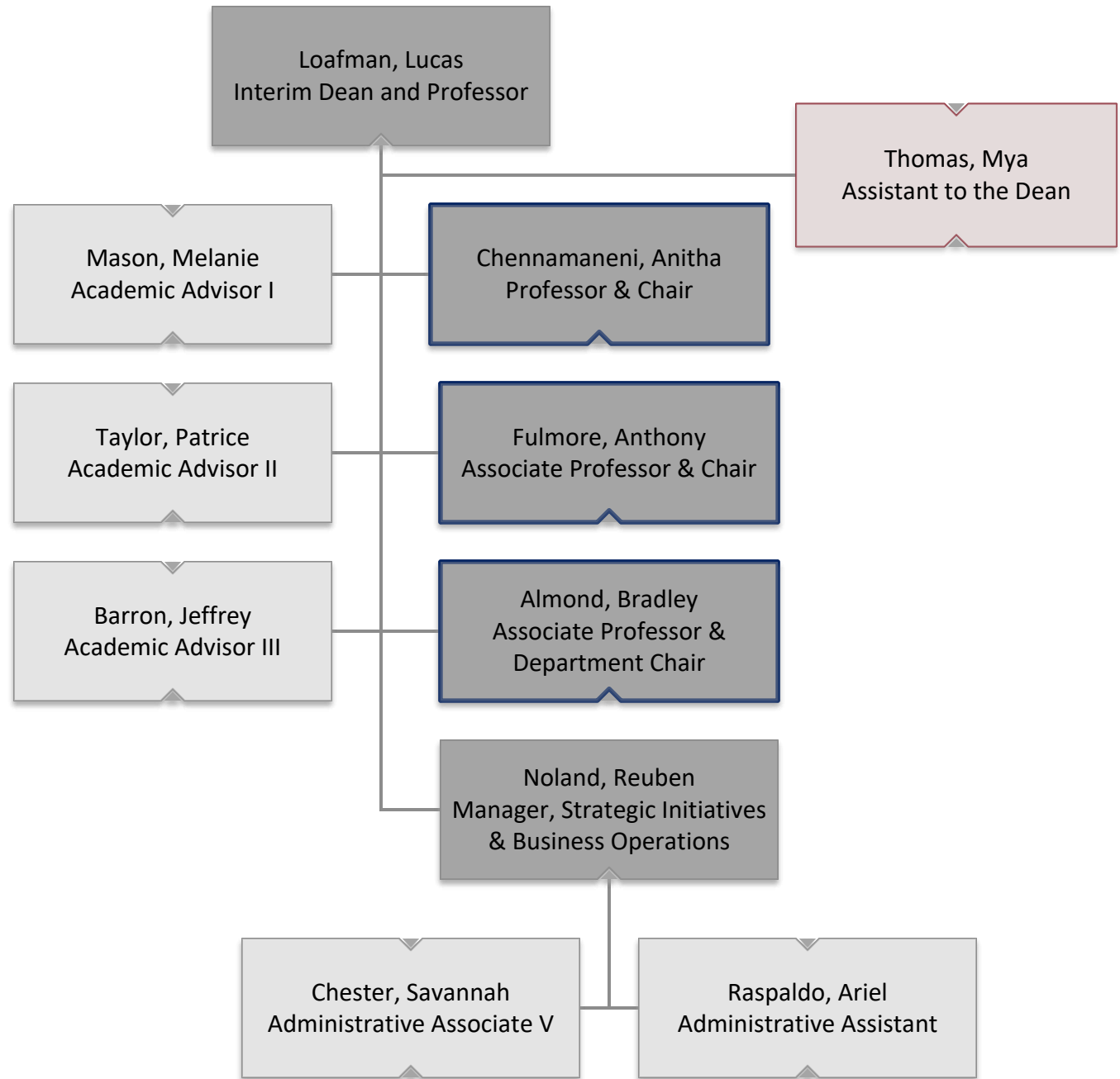


Graduate School



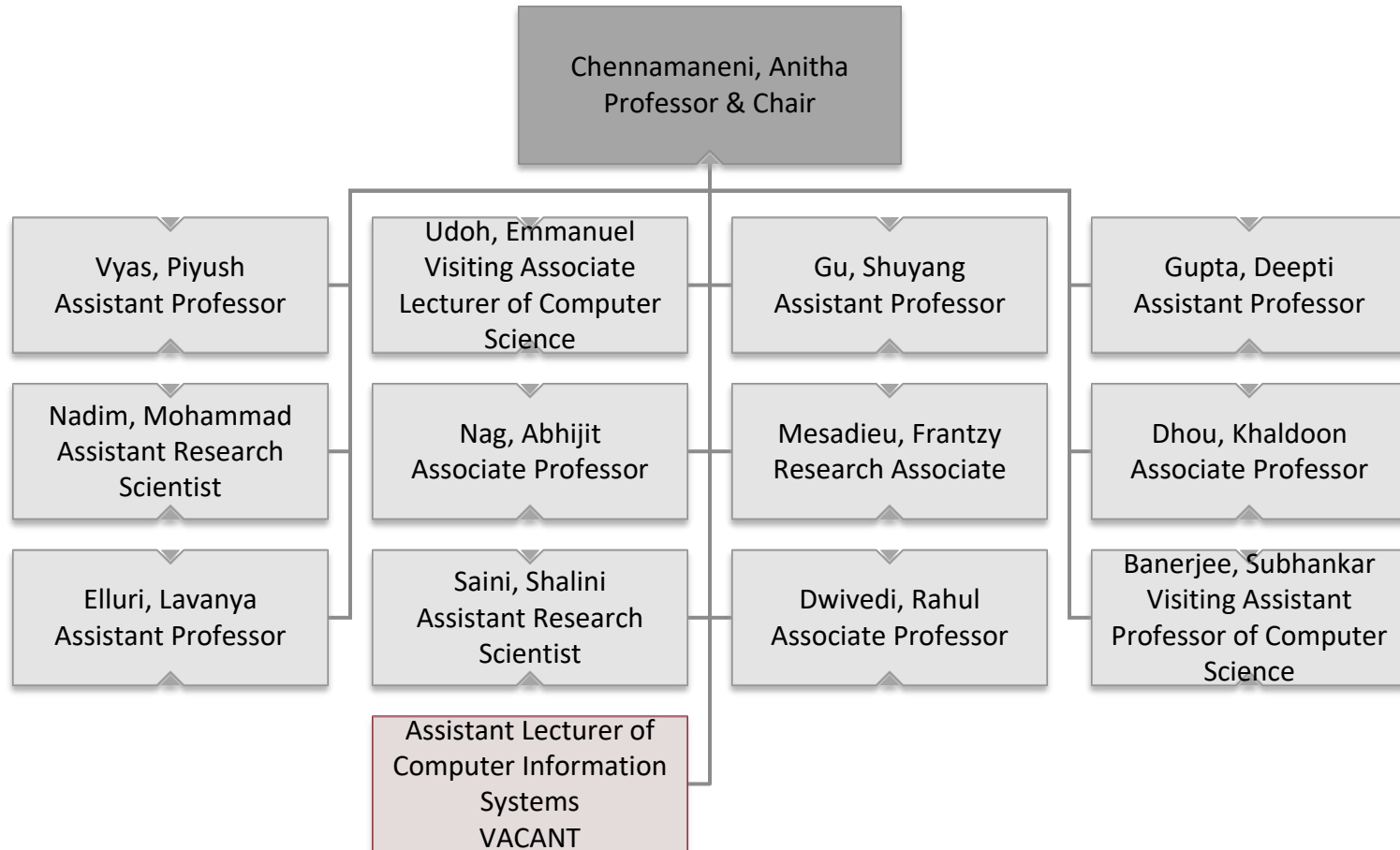


College of Business Administration



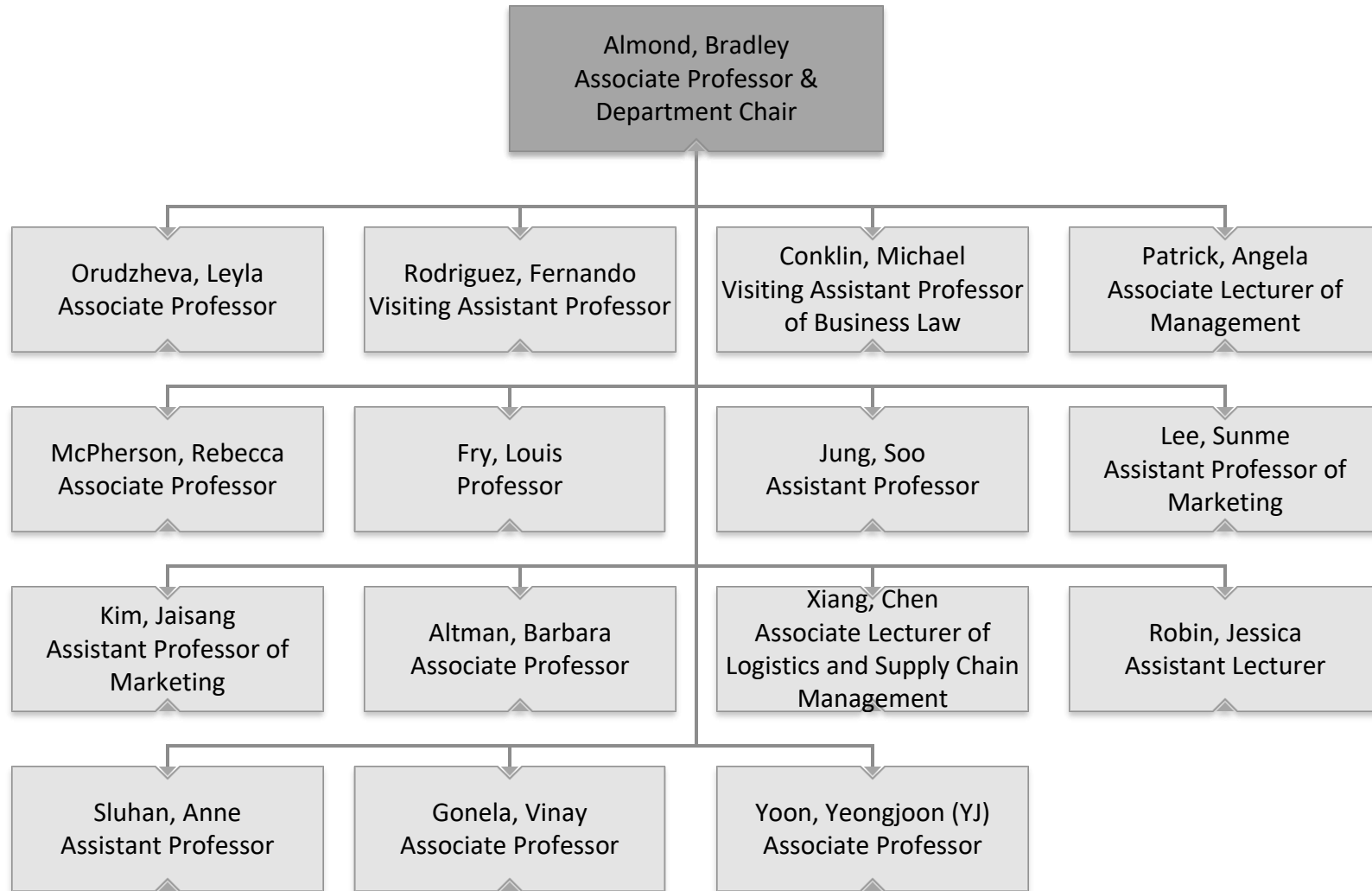


College of Business Administration Computer Information Systems



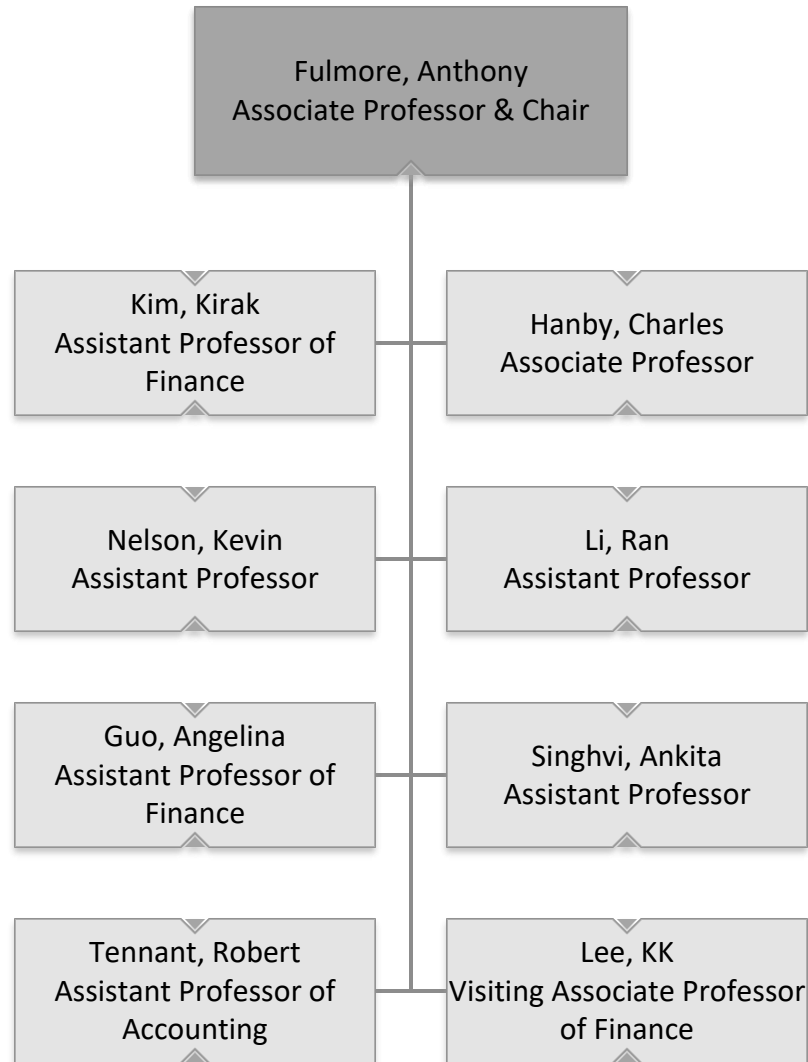


College of Business Administration Management and Marketing



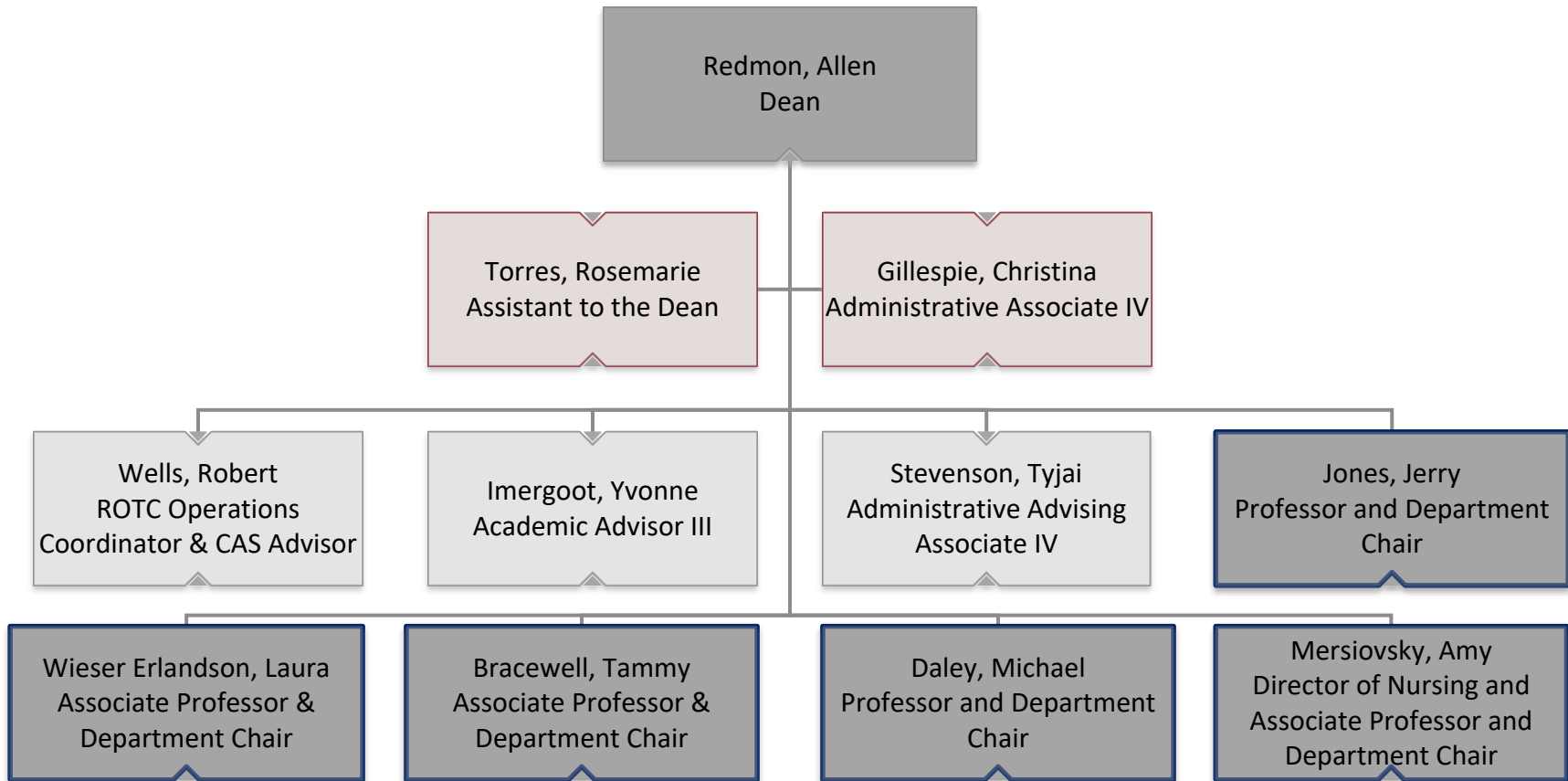


College of Business Administration Accounting, Finance, and Economics



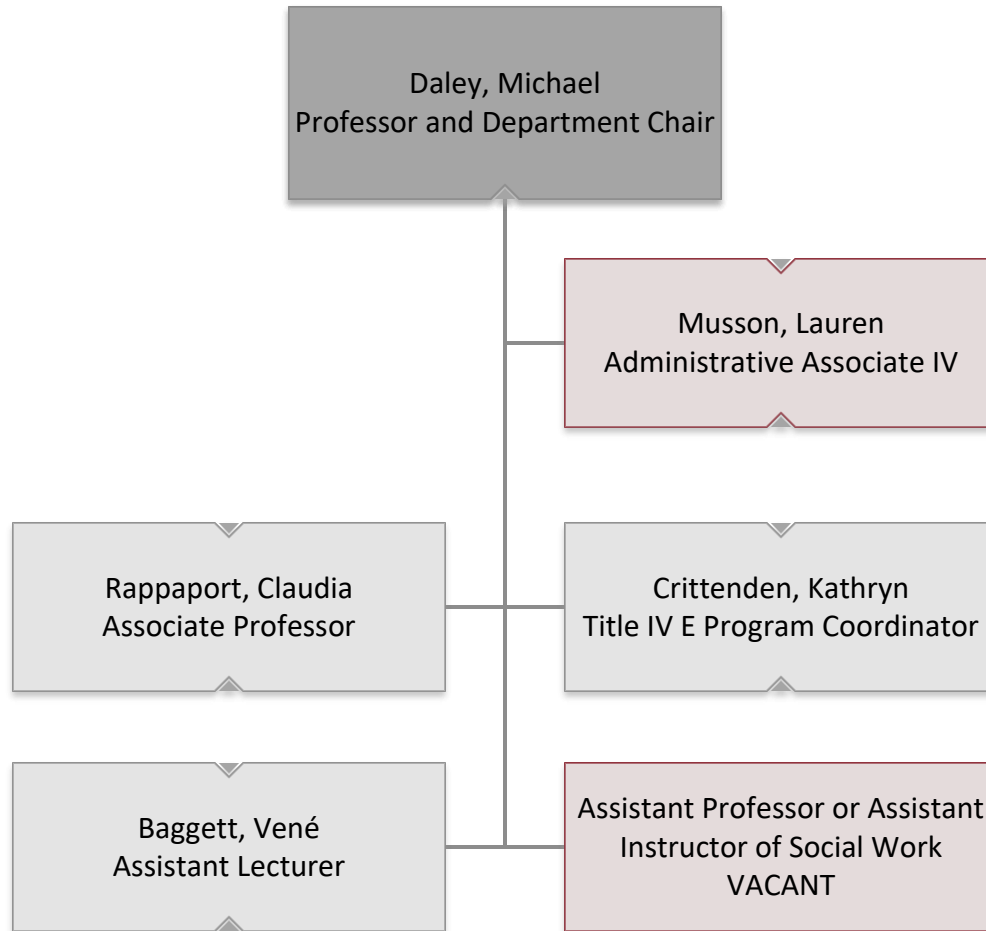


College of Arts and Sciences



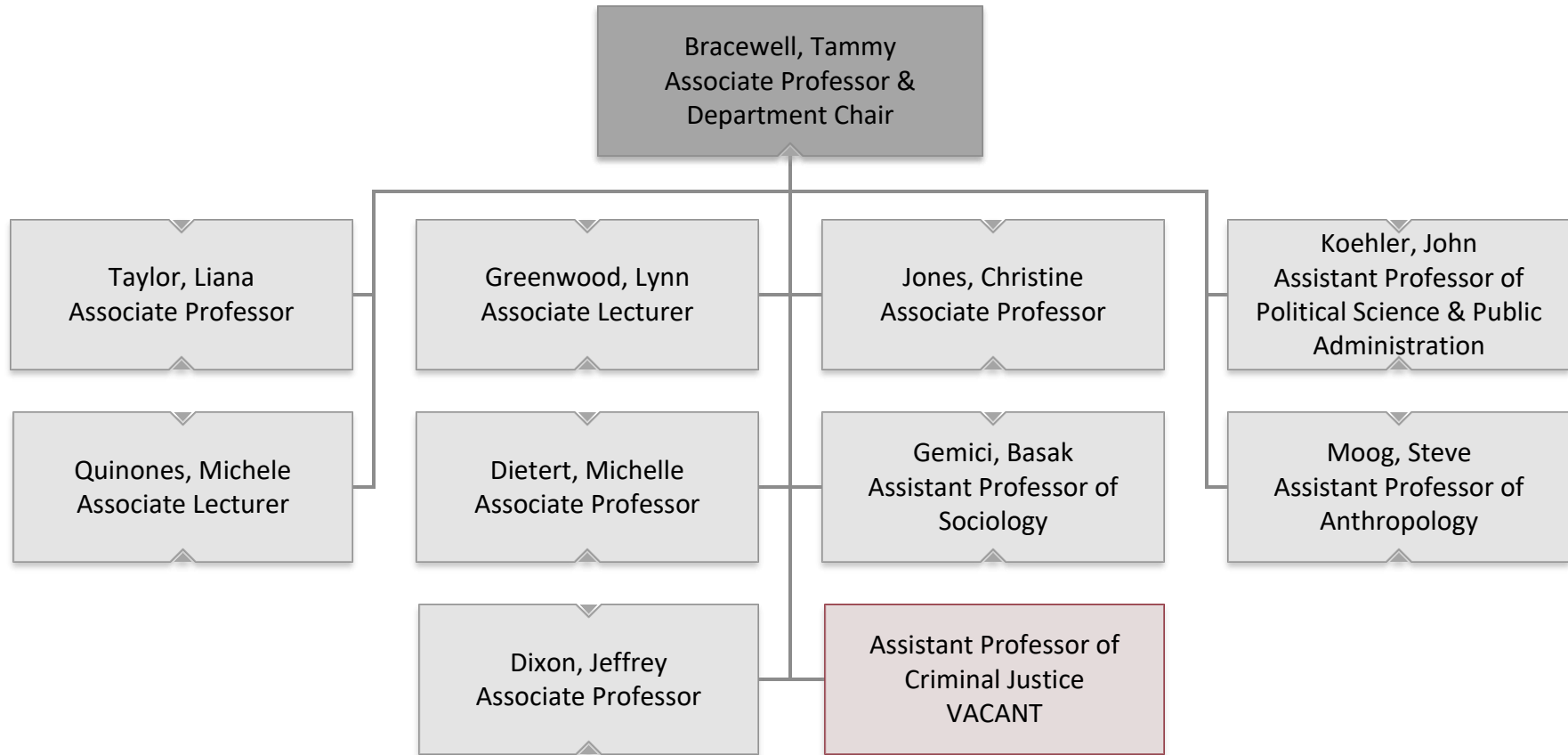


College of Arts and Sciences Social Work



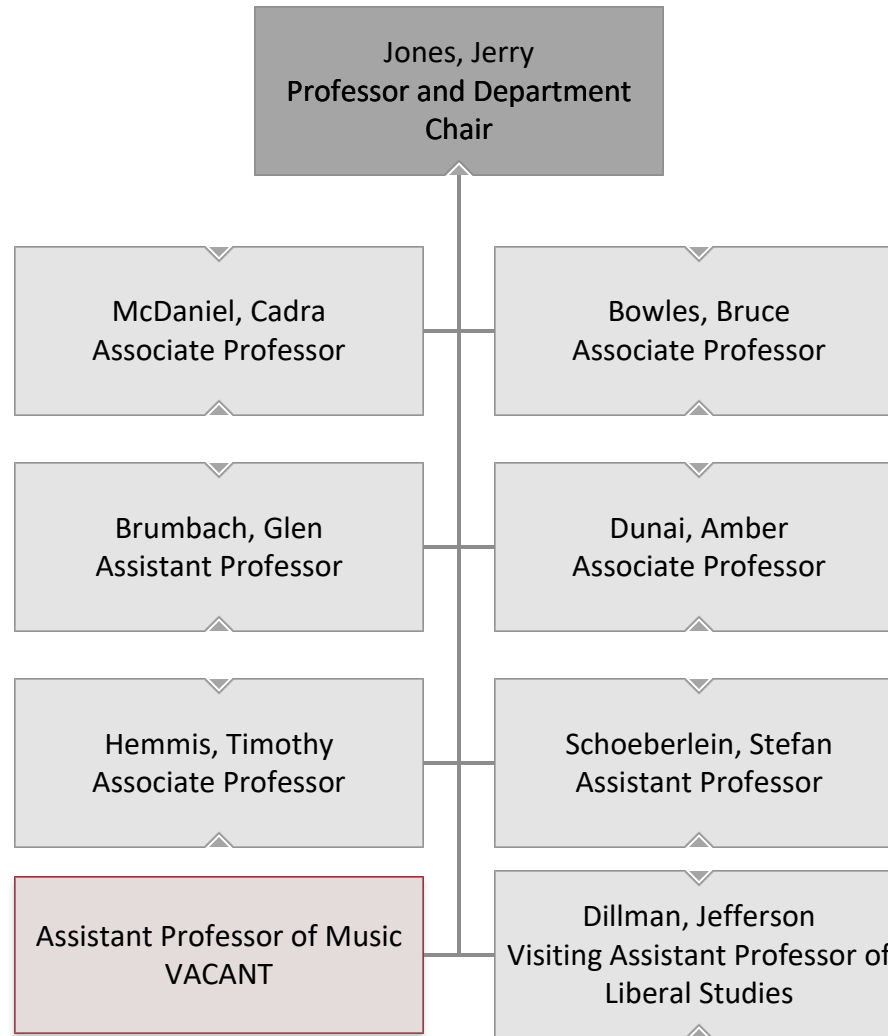


College of Arts and Sciences Social Sciences



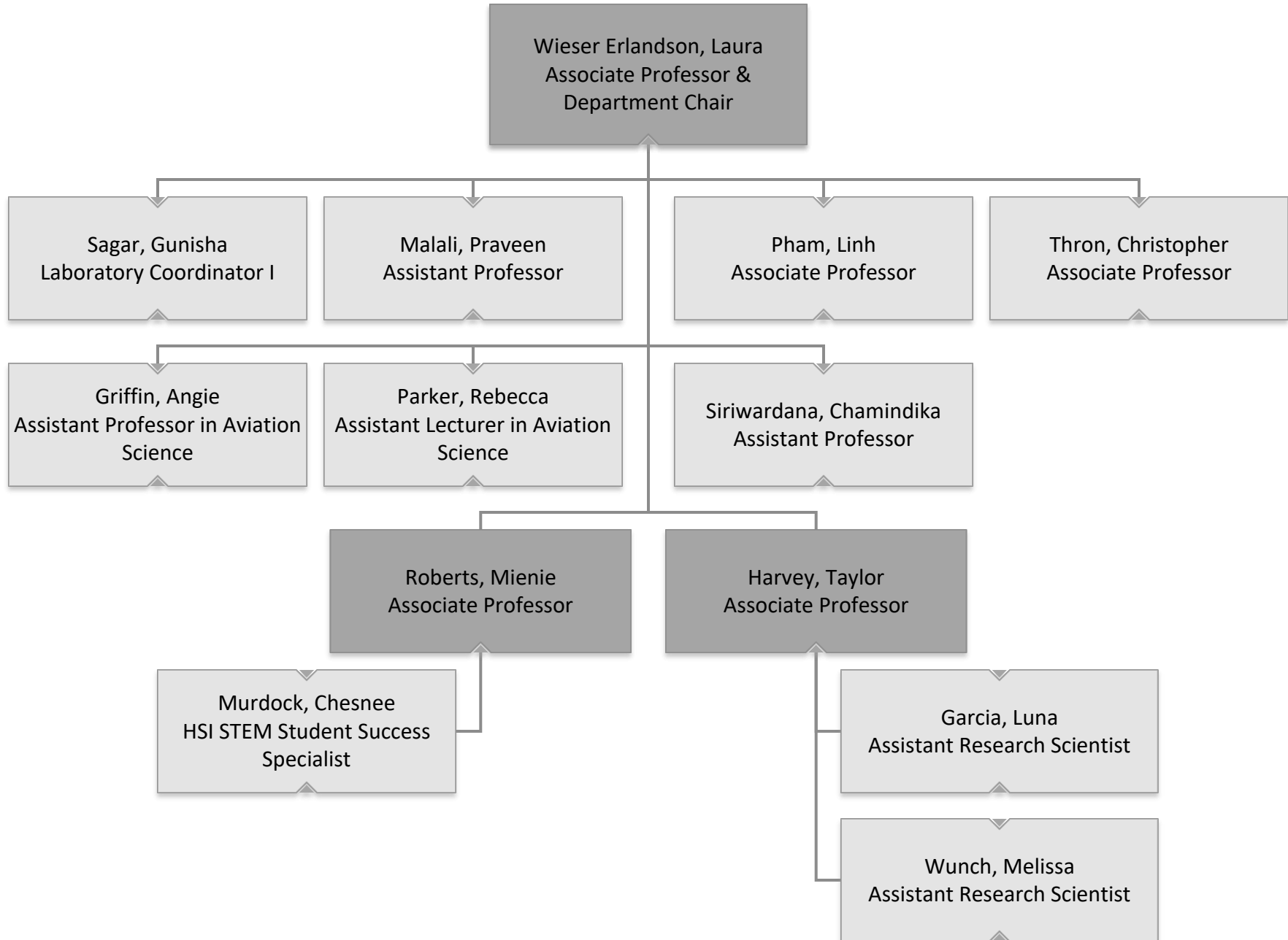


College of Arts and Sciences Humanities





College of Arts and Sciences Science and Mathematics



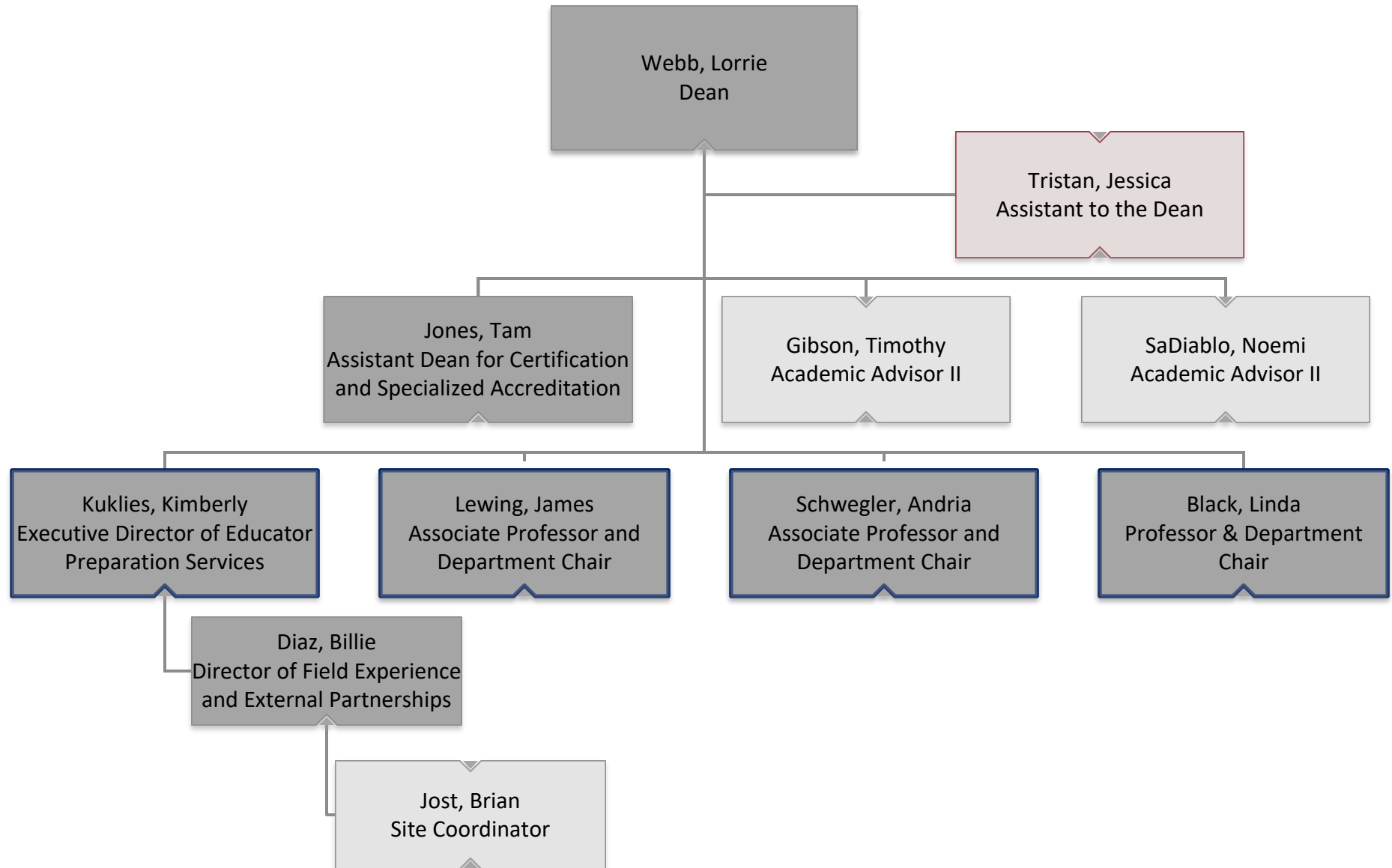


College of Arts and Sciences Nursing



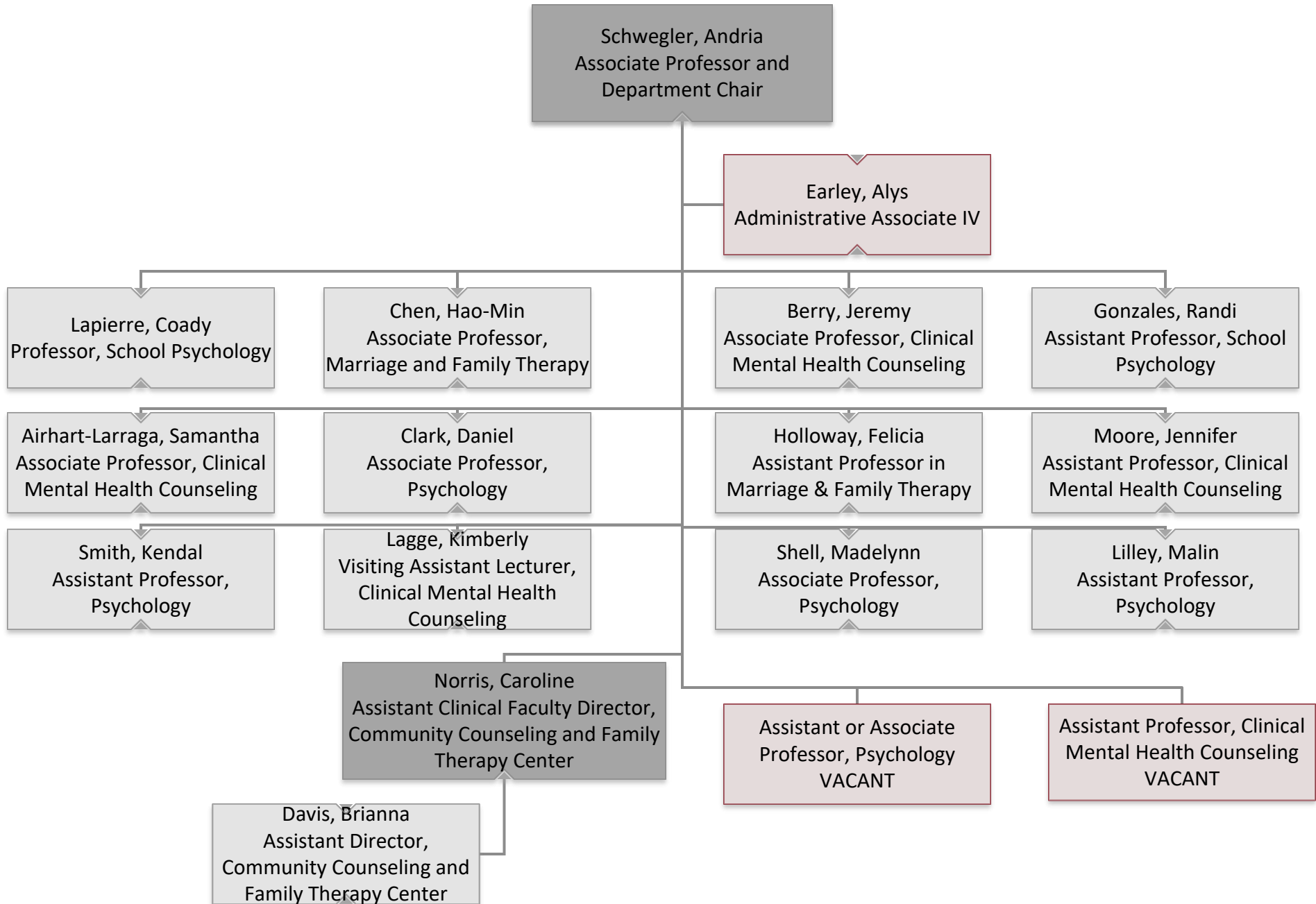


College of Education and Human Development



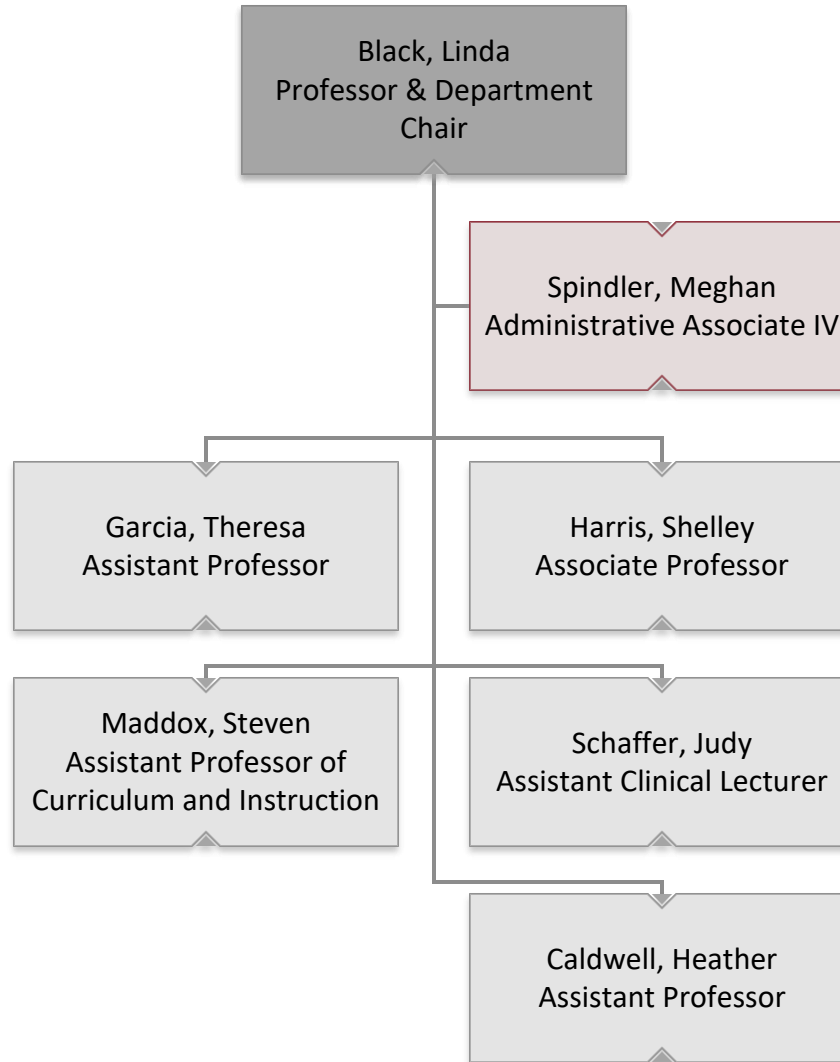


College of Education and Human Development Counseling and Psychology



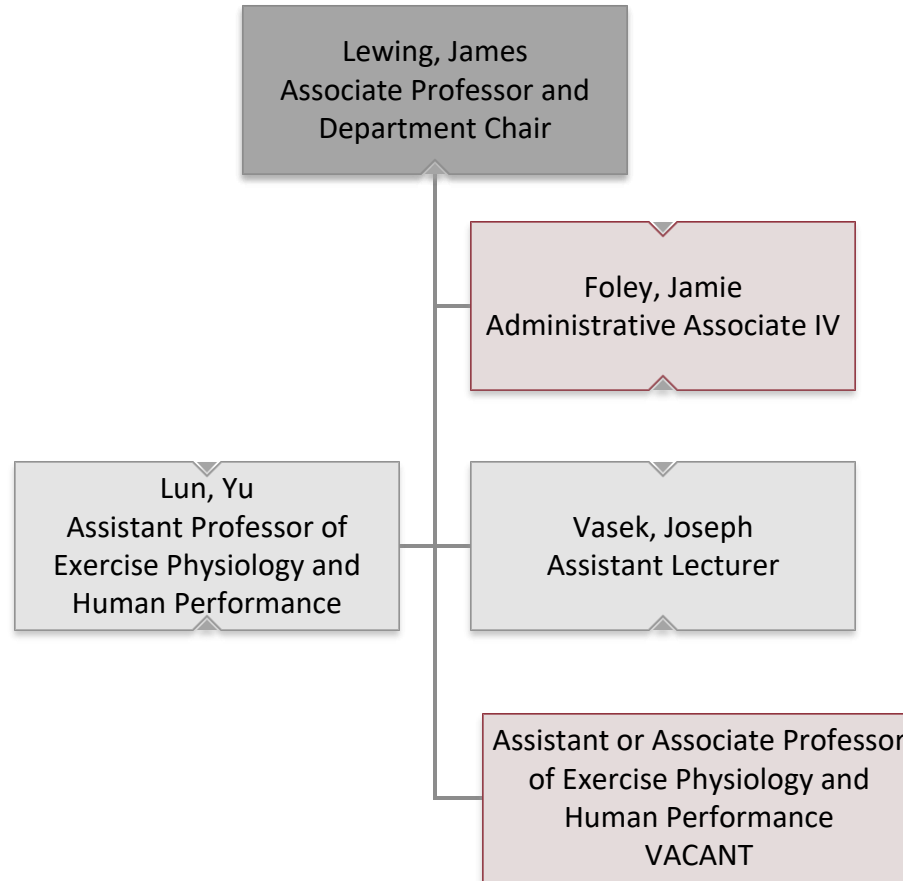


College of Education and Human Development Curriculum and Instruction



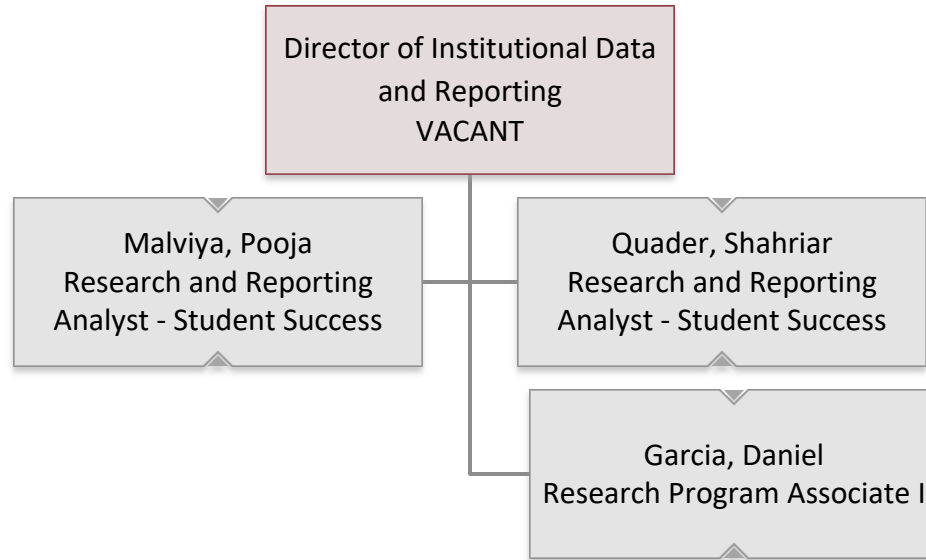


College of Education and Human Development Educational Leadership and Human Development





Institutional Data and Reporting





Student Affairs

Griggs, Brandon
Assistant Vice President and
Dean of Student Affairs

Wiatrek, Jamie
Assistant to the Dean &
Business Coordinator II

Amuna, Carmelia
Director of Student Wellness
and Counseling

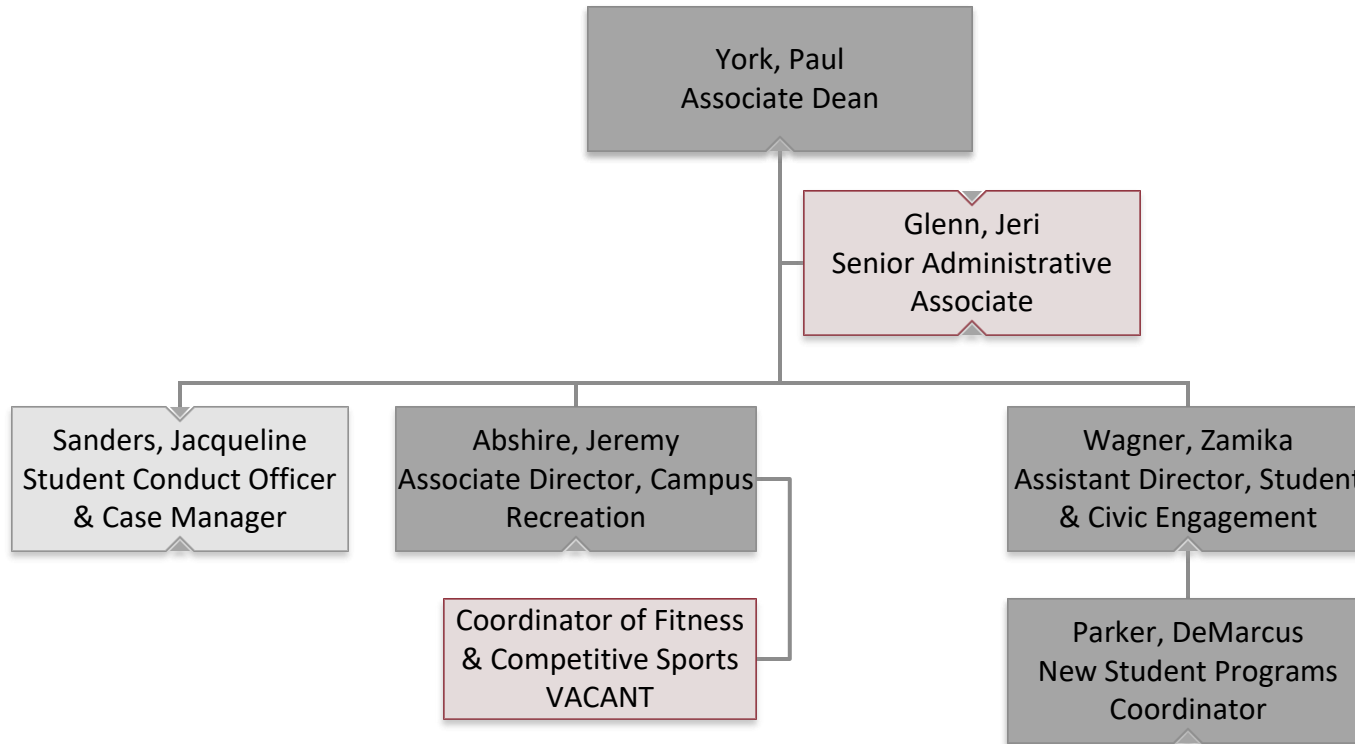
Legree-Roberts, Stephanie
Associate Dean and
Executive Director

York, Paul
Associate Dean

Holman, Keisha
Director of Career and
Professional Development

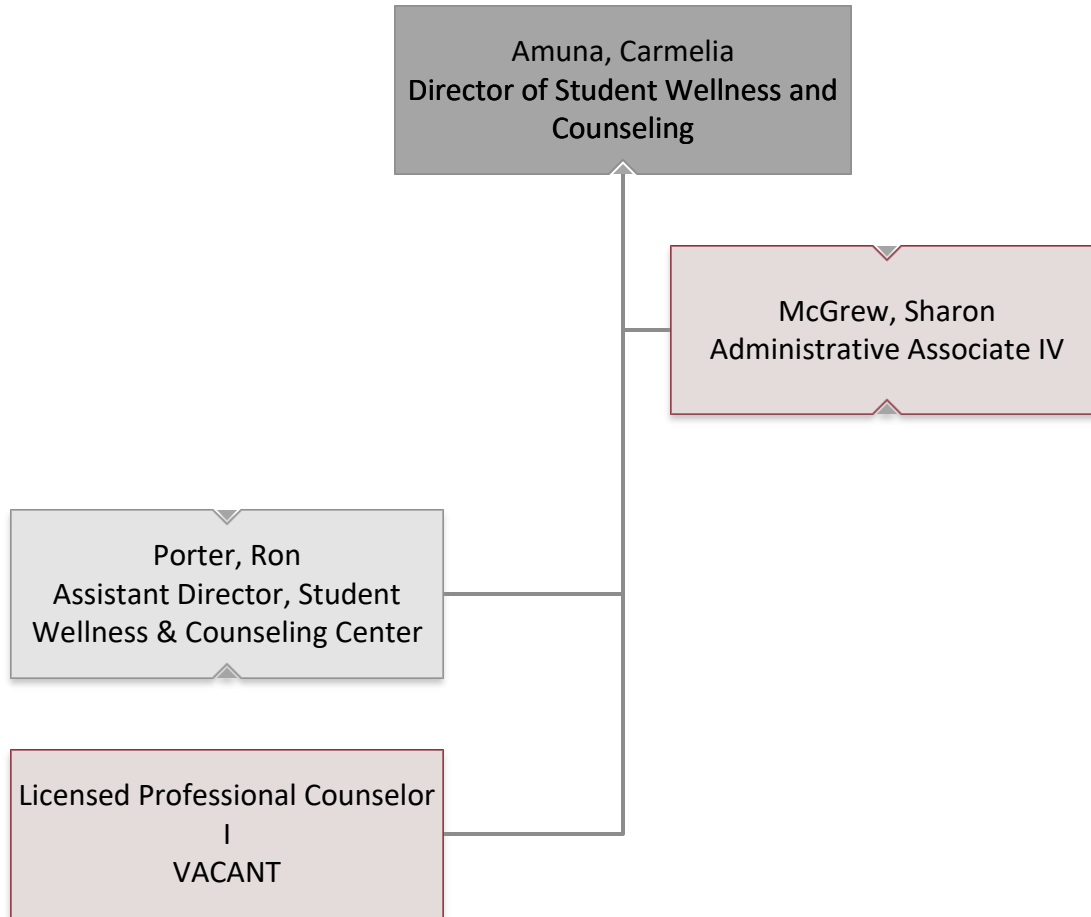


Student Affairs Student & Civic Engagement





Student Affairs Student Wellness & Counseling Center





Warrior Center for Student Success

Legree-Roberts, Stephanie
Associate Dean and
Executive Director

Byrd, Shae
Senior Administrative
Associate IV

Scott, Cheryl
Associate Director, Student
Success and Academic Support
Services

Ermonfils, Mariah
Community Resource
Coordinator, WarriorU

Gaddy, Chastity
Access and Accommodations
Coordinator

Tolle, Ashley
Associate Director, Student
Success & WarriorU

Sackett, Laurie
Student Success Coach I

Cooper, Jerome
Student Success Coach I

Bhakta, Jaykumar
Research Program
Associate I

Pettit, Chad
Director, University Writing
and Learning Center

Blain, Marquita
Coordinator, Certification
Testing

Jeon, Yoon Jae
Assistant Director, Student
Success and Experiential
Learning

Thomas, Kavya
Supplemental Instruction
Assistant I

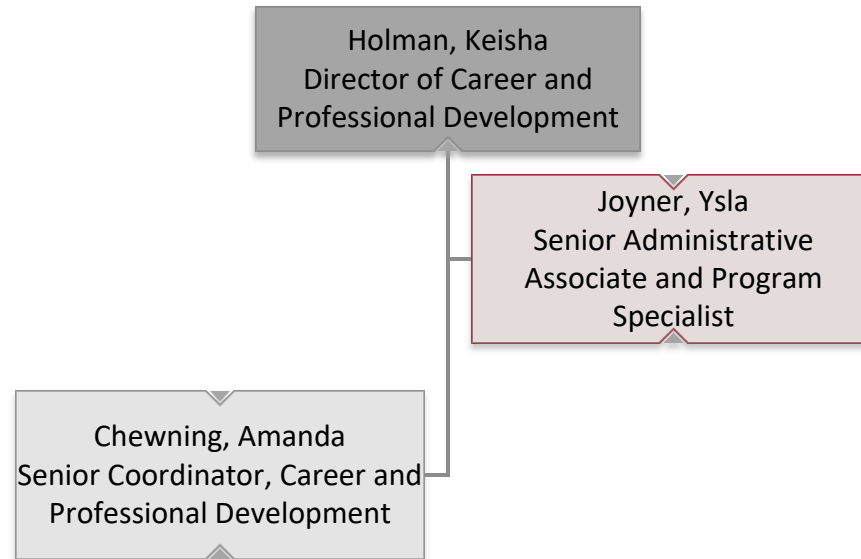
Snodgrass, Charles
Supplemental Instruction
Assistant I

Etienne, Stephane
Support Program Specialist

(2) Writing Consultants
VACANT

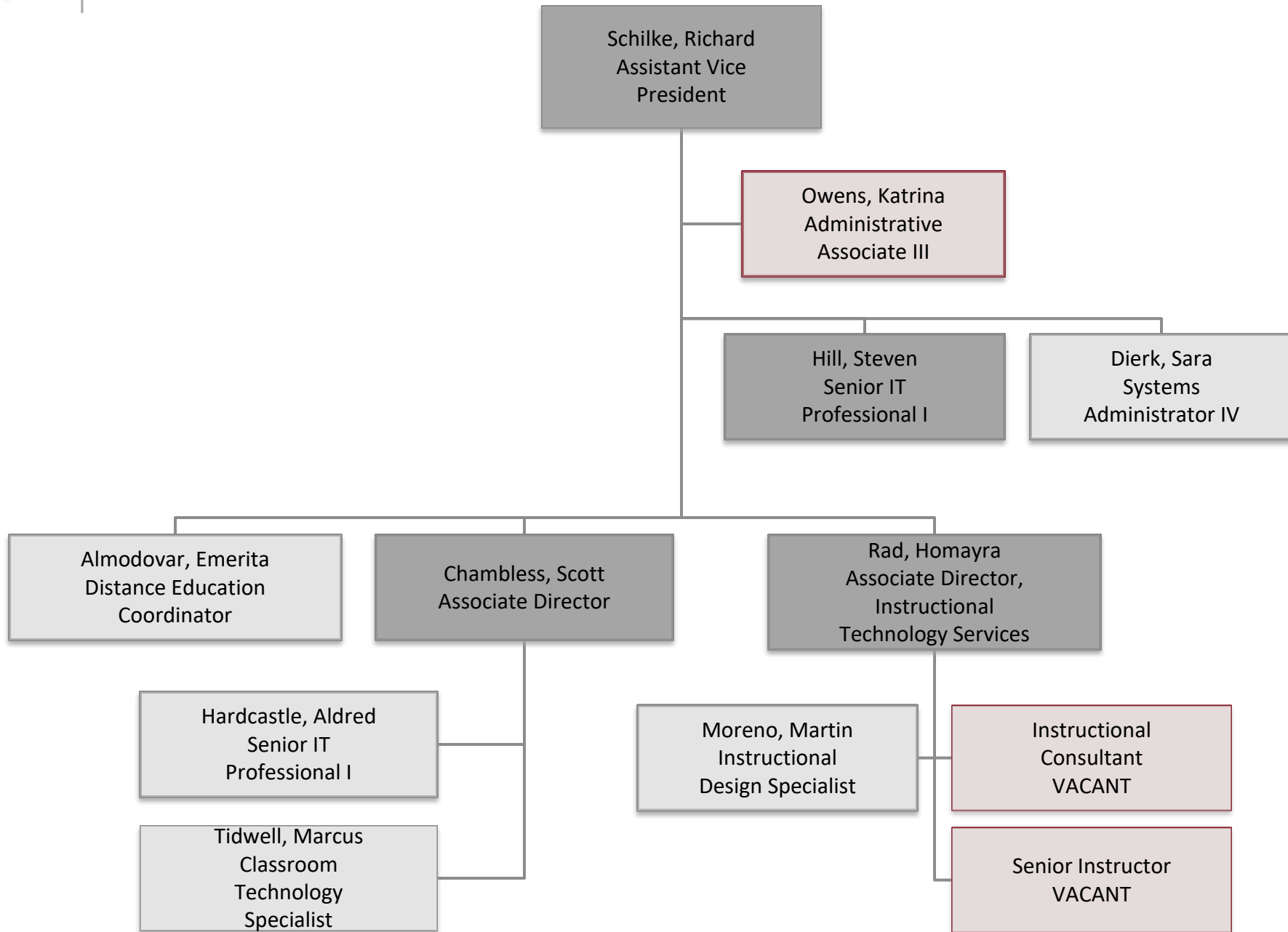


Student Affairs Career and Professional Development





Technology Enhanced Learning





University Library

McCafferty, Bridgit
Dean of the University Library and
Associate Librarian

Hopkins, Lisa
Associate Librarian and
Assistant Dean

Schmidt, Michele
Business Coordinator I

Nelson, Sandra
Electronic Resources
Librarian

Dawson, Margaret
Associate Librarian & Head of
Public Services- Faculty

Harris, Dawn
Associate Librarian - Faculty

Weaver, Debra
Library Specialist I

Casey, Dawndrea
Library Specialist III

Clady, Kristen
Library Specialist II

Feamster, Ashlie
Library Specialist I

Jones, Melanie
Library Specialist I

Shea, Michelle
Associate Librarian - Faculty

Eastes, Victoria
Associate Librarian

Herrera, Digna
Library Specialist I

Dantzler, Angela
Assistant Librarian -
Reference

Williams, Kelly
Assistant Librarian -
Faculty

Marshall, Emily
Library Specialist II -
Archives

Bolin, Julie
Assistant Librarian